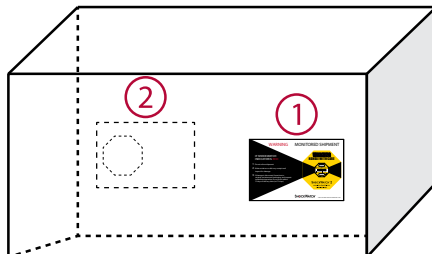
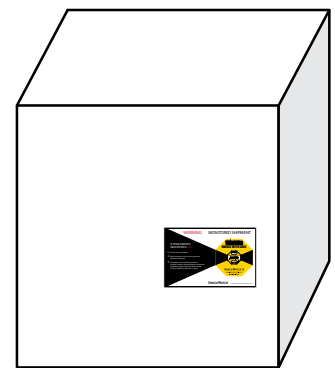




# ShockWatch 2 QR Mounting Instructions

- 1) Mount the ShockWatch® 2 QR Impact Indicator in the lower third of the package/pallet as close to the edge as possible. Avoid the center of the package because the mounting locations should be structurally sound.
- 2) If the package is twice as long as it is wide, use two ShockWatch 2 QR Impact Indicators. Place a second indicator in the same position on the opposite side of the package.



- 3) Place the Alert Sticker on your bill of lading as a reminder to receivers to check the ShockWatch 2 indicator immediately upon arrival.