



ColdChain Complete Temperature Indicators

- Fortify your cold chain packaging solution for when transit doesn't go as planned.
- Deliver irreversible evidence of exposure to unacceptable temperature conditions.
- Validate your cold chain and ensure product efficacy with time over temperature monitoring
- Upper and lower temperature thresholds designed for sensitive pharmaceuticals, samples, and diagnostic products.
- Visual indication creates peace of mind for cold chain participants and requires no unique process or software for assessing an excursion.

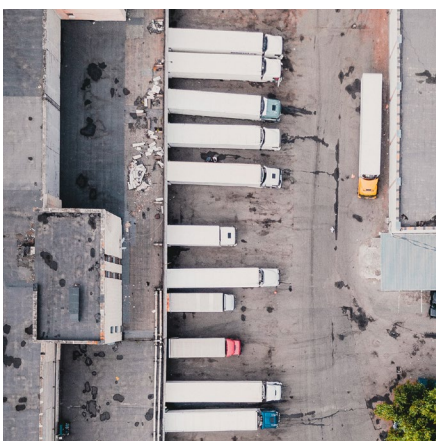
How can you be sure that unacceptable temperature during transit has not compromised your product's quality and efficacy?

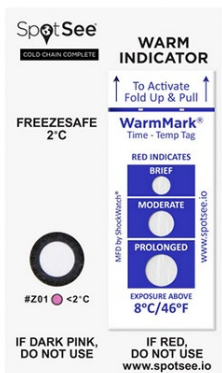
Refrigeration equipment is not always reliable. Temperatures can vary dramatically during transit – trailer, distribution centers, storage. Your product may encounter unexpected delays in areas with less than ideal conditions.

Cold Chain Complete time-temperature indicators provide a cost-effective tool for monitoring the temperature of your package. They are single-use devices that provide accurate, irreversible evidence of a temperature excursion. With the information you gather from these indicators, you can make smarter

decisions across your cold chain.

Cold Chain Complete is available in two formats: the standard **ColdChain Complete** and **ColdChain Complete XS**.





Run Out Times

| Cold Chain Complete | | | | |
|--|--------------|----------|-----------|-------------------|
| Temperature Range | Run Out Time | | | Freeze Activation |
| Freeze & 3 Window Warm Indicator Card | Brief | Moderate | Prolonged | Within |
| 2°C – 8°C | 2 hours | 12 hours | 48 Hours | 90 Minutes |
| 0°C – 8°C | 2 Hours | 12 Hours | 48 Hours | 60 Minutes |
| Freeze & Single Window Warm Indicator Card | | | | |
| 0°C – 25°C | — | — | 8 hours | 60 Minutes |
| 2°C – 25°C | — | — | 8 hours | 90 Minutes |
| 0°C – 8°C | — | — | 8 hours | 60 Minutes |
| 2°C – 8°C | — | — | 8 hours | 90 Minutes |

| Cold Chain Complete XS | | | | |
|--|--------------|----------|-----------|-------------------|
| Temperature Range | Run Out Time | | | Freeze Activation |
| Freeze & Single Window Warm Indicator Card | Brief | Moderate | Prolonged | Within |
| 0°C – 8°C | — | — | 8 Hours | 60 Minutes |
| 0°C – 8°C | — | — | 48 Hours | 60 Minutes |
| 2°C – 8°C | — | — | 8 hours | 90 Minutes |
| 2°C – 8°C | — | — | 48 hours | 90 Minutes |
| 0°C – 25°C | — | — | 8 hours | 60 Minutes |
| 2°C – 25°C | — | — | 8 hours | 90 Minutes |

Specifications

| | |
|--------------------------------|---|
| Accuracy of Temperature | ±1°C / ±2°F for both freeze and warm indicators |
| Storage Condition | Store in dark environment between 15°C - 25°C (59°F - 77°F), 35-55% RH |
| Shelf Life | 1 years |
| Arming Method | Freeze indicator: None / Warm indicator: Pull-tab |
| Mounting Method | ColdChain Complete: Place indicator as close to the product being monitored as possible. ColdChain Complete XS: Adhere or place indicator as close to product being monitored as possible. |