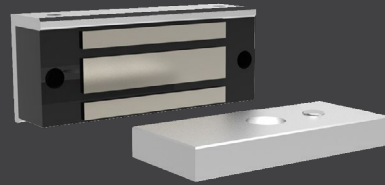


SHOCKWATCH®

Damage Prevention and Safety Solutions



Gate Access System (GAS)



Access to workplace
safety is now easier.

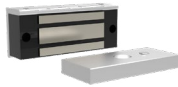
System Components.

Gate Access Components



**AV-30 Tag
Verification Unit**

Verifies Battery
Pedestrian Tag
operational condition.



**Electromagnetic
Lock**

A fail-safe latch that
controls access
of doors / gates.

Pedestrian Tags and Charging



**Rechargeable
Pedestrian Tag**

Includes LED light,
sound, and vibration
alert. 3 colour indication
of battery levels.



**Wireless Rechargeable
Tag Base**

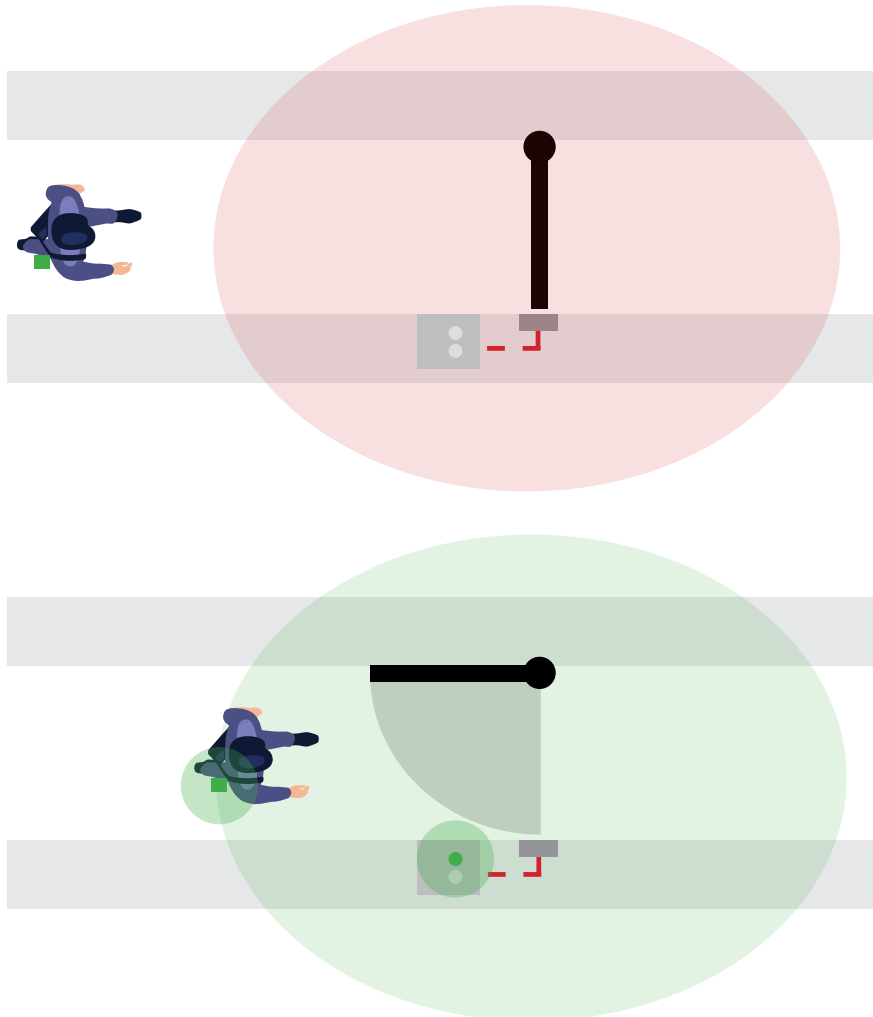
Charging base for
single Rechargeable
Pedestrian Tag.



**Wireless Rechargeable
Tag Station**

Charging base for up
to 12 Rechargeable
Pedestrian Tags.

Gate Access – Functionality.



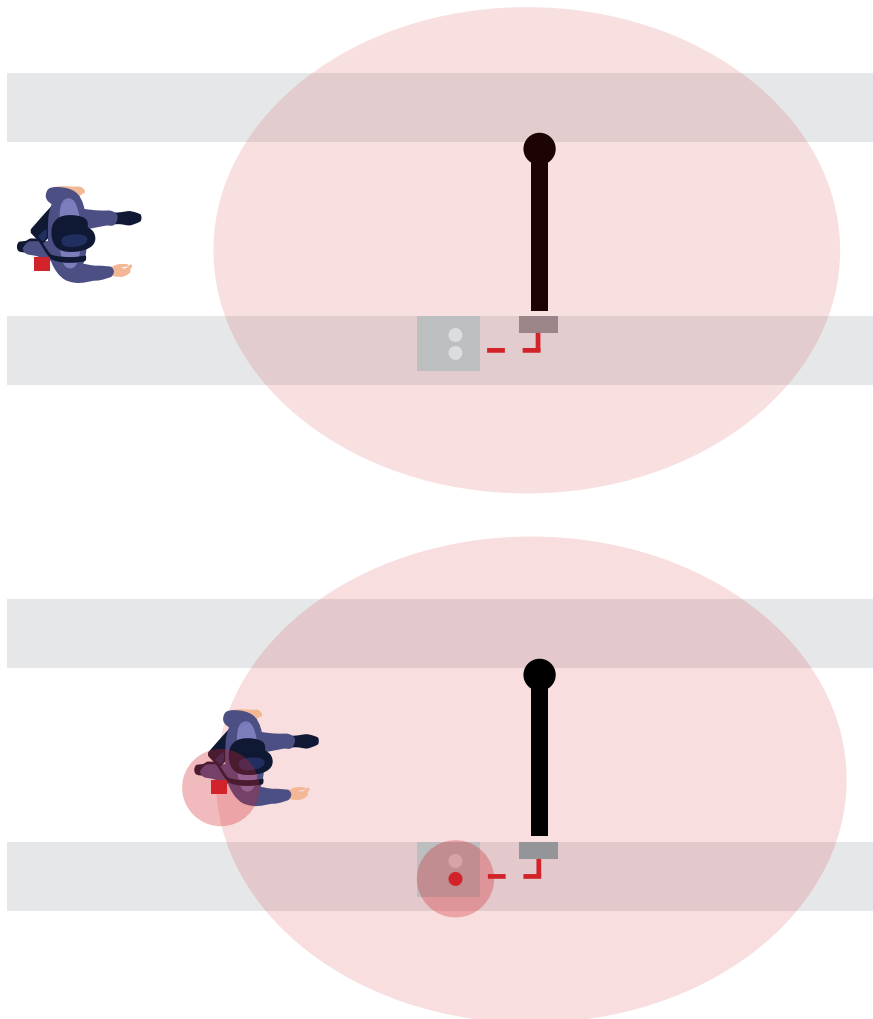
System Components:

- All pedestrians are wearing Pedestrian Tags (T-10R).
- AV-30 Tag Verification Unit is installed as close as possible to the security access gate.
- An electromagnetic latch is connected to the security access gate and to the AV-30 Tag Verification Unit.

Main Operating Characteristics:

- Gates are locked on pedestrian approach.
- When a pedestrian enters the detection zone, the Pedestrian Tag is detected by the Control Box, indicated by a green light. This unlocks the access gate.
- The AV-30 Tag Verification Unit should be installed close to the access gate to help balance Tag detection on either side.
- Detection range is adjustable to suit application.

Gate Access – Functionality.

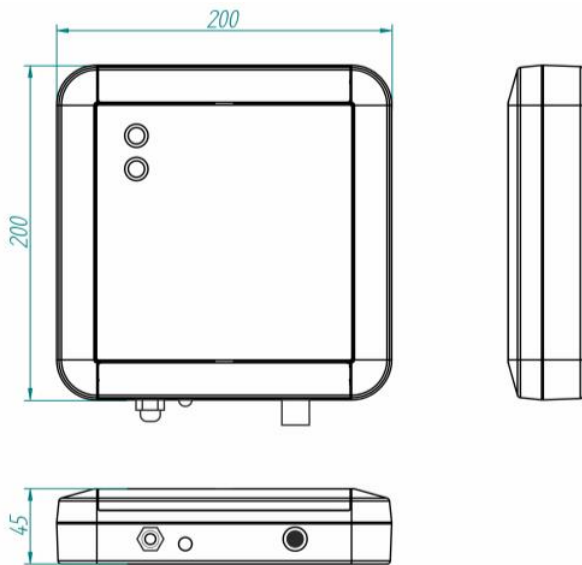


Warning: Pedestrian Tag – Low Power

- If a Pedestrian Tag is on low power (flashing red) the AV-30 Tag Verification Unit will alarm (red light) and will **not allow** access gate to open. Pedestrian Tag will need to be recharged to resume functionality.



Specifications



Dimensions: 200 mm x 200 mm x 45 mm

Material: ABS

IP protection: IP 65

Detection Range: Adjustable 0,25-6,5m

Power supply: 100 – 240 VAC

Consumption: 500mA

Radiated Power: 0dBm (1mW)

T^o Operating: -10°C to +60°C

Indicator light: LED

Indicator acoustic: Buzzer

Response time: -40 °C to +65 °C

Indicators: 200ms

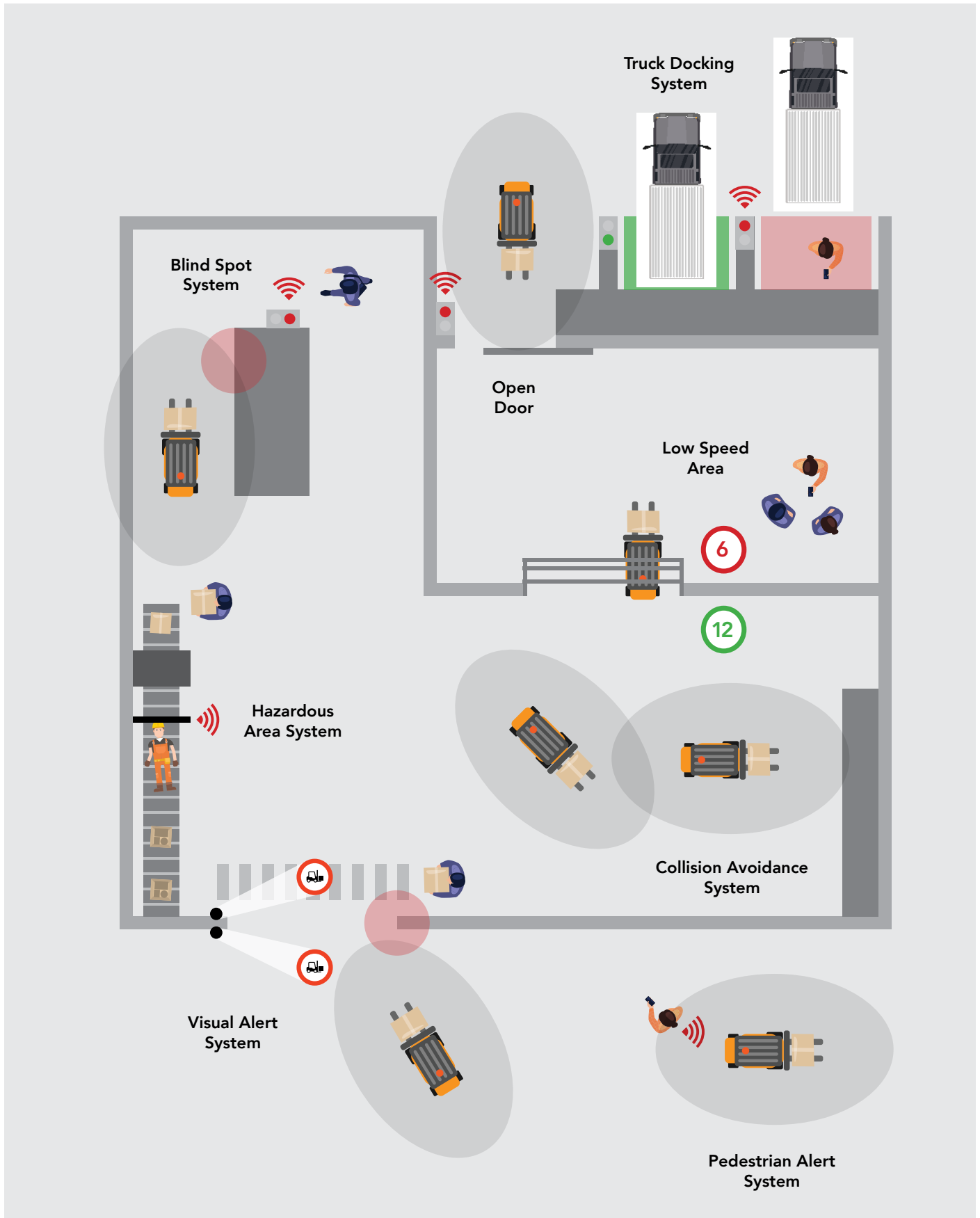
Digital inputs / outputs

Relay output (NC/NO): 200 mm x 200 mm x 45 mm

Digital input: 1 potential-free input

Power output: 24VDC / 250mA max.

The ShockWatch range of Accident Prevention Solutions.



Our Clientele.

Australia



Worldwide



SHOCKWATCH®

Damage Prevention and Safety Solutions

1300 074 625

solutions@shockwatch.com.au

shockwatch.com.au

Aug 2022

