



Elitech RCW-360 Plus IoT Data Loggers

RCW-360 Plus IoT Data Loggers support temperature and humidity monitoring, alarms, data recording, data uploading, print via Bluetooth and GPS location. It is widely used in foodstuffs, catering, logistics and industries that require HACCP system certification.

Data is transmitted to the Elitech iCold cloud platform. Users can view, manage and monitor data online by a browser or smartphone APP. With a built-in rechargeable lithium battery, it provides real-time data upload and platform alarming service even when there is a power outage.

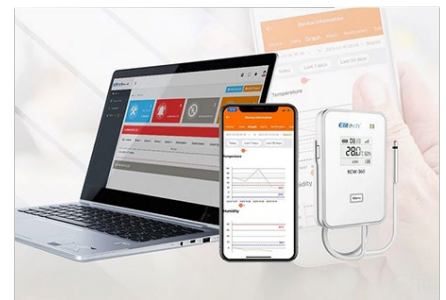
Elitech iCold IoT Platform – Always available. On any device.

We offer free Cloud access for your data logger system. You can setup the data loggers in the Elitech iCold platform and also view and manage the measurement values along with alarm functions sent via e-mail.

Some of the advantages of the Elitech iCold platform are:

- A central operating element for the monitoring, documentation and administration of all measurement locations
- Secure protection of your measurement data in a power outage and from unauthorised access by third parties.
- Automatic storage of your measurement values, easy data access from anywhere in the world via smartphone, tablet, laptop, or PC.
- Comprehensive alarm notification options directly to the terminal device of your choice (e-mail, APP push).
- No software installation required: you just need a normal Internet browser to view, manage, and analyse your data.

Elitech iCold IoT Platform Real Time Remote Temperature Monitoring Solutions

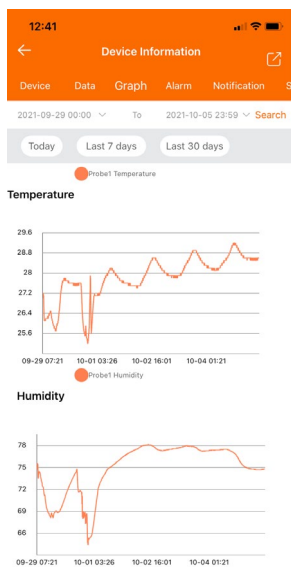


Features

- A wide temperature measuring range from -40°C~+80°C and humidity range from 0~100%RH
- App, Email and SMS alerts from Elitech iCold IoT platform; Audible and visual alarm from the device.
- Multiple installation and power supply methods, flexible to be installed anywhere.
- Elitech Cloud supports parameter configurations, graph analysis, report export and etc.
- Unlimited Cloud storage with additional local storage of 20,000 points if the device is offline.
- Runs approximately 3 months at 1-hour uploading interval on a single full charge
- 1-year warranty



Monitoring App and Web Features



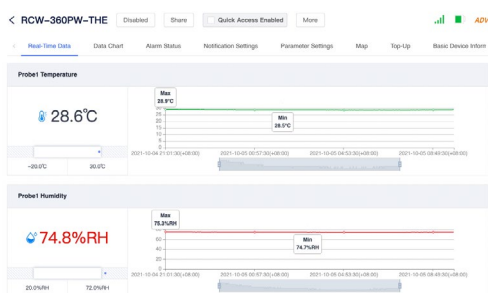
App Graph

Record Time	Probe1 Temperature	Probe1 Humidity
2021-10-05 09:39:30(+08:00)	28.6°C	74.8%RH
2021-10-05 09:37:30(+08:00)	28.6°C	74.8%RH
2021-10-05 09:35:30(+08:00)	28.6°C	74.8%RH
2021-10-05 09:33:30(+08:00)	28.6°C	74.8%RH
2021-10-05 09:31:30(+08:00)	28.6°C	74.8%RH
2021-10-05 09:29:30(+08:00)	28.6°C	74.8%RH
2021-10-05 09:27:30(+08:00)	28.6°C	74.8%RH
2021-10-05 09:25:30(+08:00)	28.6°C	74.8%RH
2021-10-05 09:23:30(+08:00)	28.6°C	74.8%RH
2021-10-05 09:21:30(+08:00)	28.6°C	74.8%RH
2021-10-05 09:19:30(+08:00)	28.6°C	74.8%RH
2021-10-05 09:17:30(+08:00)	28.6°C	74.8%RH
2021-10-05 09:15:30(+08:00)	28.6°C	74.8%RH
2021-10-05 09:13:30(+08:00)	28.6°C	74.8%RH
2021-10-05 09:11:30(+08:00)	28.6°C	74.8%RH

App Data

Alarm Event	Time	Status
Probe1-humidity Above Upper Limit	2021-10-01 09:11:30	Untreated
Probe1-humidity Above Upper Limit	2021-10-01 09:01:30	Untreated
Probe1-humidity Above Upper Limit	2021-10-01 08:51:30	Untreated
Probe1-humidity Above Upper Limit(Release)	2021-09-30 12:11:30	Untreated
Probe1-temperature Above Upper Limit(Release)	2021-09-29 11:58:30	Untreated
Probe1-temperature Above Upper Limit	2021-09-29 10:20:30	Untreated
Probe1-humidity Above Upper Limit	2021-09-29 10:16:30	Untreated

App Alarms



Web Real Time Data

Date	Probe1 Temperature	Probe1 Humidity	Note
2021-10-05 09:43:30(+08:00)	28.6°C	74.8%RH	
2021-10-05 09:41:30(+08:00)	28.7°C	74.8%RH	
2021-10-05 09:39:30(+08:00)	28.6°C	74.8%RH	
2021-10-05 09:37:30(+08:00)	28.6°C	74.8%RH	
2021-10-05 09:35:30(+08:00)	28.6°C	74.8%RH	
2021-10-05 09:33:30(+08:00)	28.6°C	74.8%RH	
2021-10-05 09:31:30(+08:00)	28.6°C	74.8%RH	
2021-10-05 09:29:30(+08:00)	28.6°C	74.8%RH	
2021-10-05 09:27:30(+08:00)	28.6°C	74.8%RH	
2021-10-05 09:25:30(+08:00)	28.6°C	74.8%RH	

Web Data Chart

The web parameter settings page allows users to configure the device's parameters. It includes sections for Sensor Parameters, User Preferences, and System Parameters. The current settings for Probe1 Temperature are Range (40 - 85)°C, Display: Yes, Lower Limit: 20.0 °C, and Upper Limit: 30.0 °C. The current settings for Probe1 Humidity are Range (0 - 100)%RH, Display: Yes, Lower Limit: 20.0 %RH, and Upper Limit: 72.0 %RH.

Web Parameter Settings

The web notification settings page allows users to configure the device's notification settings. It includes sections for Notification Settings, Alarm Rules, and Alarm Level. The current settings for Alarm Rules are Alarm Period: 6:00 To 24:00, Notification Interval: 10 min, and Alarm Level: Single-level Alarm.

Web Notification Settings



Data Loggers available (WiFi or 4G)



RCW-360 PLUS
Internal Temperature
Data Logger



RCW-360 PLUS
Internal Temperature
and Humidity Data
Logger



RCW-360 PLUS
Temperature Data
Logger External
Dual Probe



RCW-360 PLUS
Temperature and
Humidity Data
Logger External
Single Probe



RCW-360 PLUS
Temperature and
Humidity Data
Logger External
Dual Probe

Specifications

Power Adaptor	5V/2A or 9V/1.5A (DC)
Temperature Measuring Range	Internal -20°C to +60°C, External -40°C to +80°C
Temperature Accuracy	±0.5°C
Temperature Resolution	0.1°C
Memory Capacity	100,000 Points
Battery	Rechargeable lithium battery
Logging Interval	1 minute - 24 hours (configurable). Default interval is 30 minutes
Battery Duration	≥3 months (at 25°C, 30min uploading interval, LBS Location) or ≥14 days (at 25°C, 30min uploading interval, LBS & GPS location)
Display	TFT
LED Indicator	Status indicator, Power indicator
Communication interface	4G/WiFi
Alarm mode	Sound, SMS, email and mobile App
Protection Level	IP64 (for internal sensor); IP65 (for external sensor)
Size	109*69.4*22.9mm
Dimensions	80mm x 25mm x 12mm
Probe length	5M