



RC-5+ Temperature Data Logger (Multi Use) User Manual

Download and Install Software

1. Visit www.elitechlog.com/software. Select and download the software.
 2. Double click to open the zip file. Follow the prompts to install it.
 3. When the installation is complete, open the software.
- If necessary, disable the firewall or close the antivirus software.*



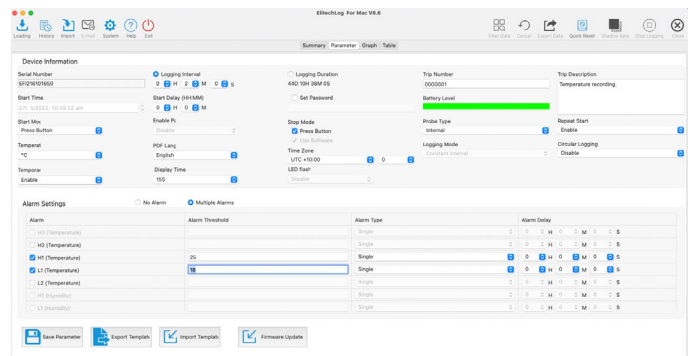
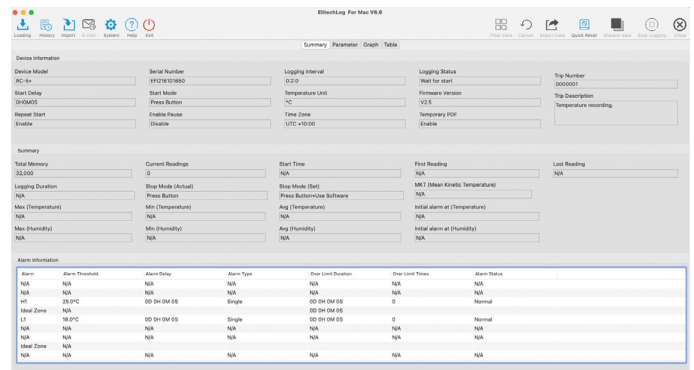
ElitechLogWin V6.2.0



Elitechlog Mac V1.2

Configure the Logger

1. Remove the cover from the data logger and connect the logger to a computer USB port. The software will read the logger automatically. Once connected, it will connect to the "Summary" page which shows Device and Alarm information.
2. To adjust parameters for setup, click on the "Parameters" Tab. On this page, you can set up all required logging parameters.
 - Logging interval period - set period. Will automatically set Logging Duration
 - Set a Start Delay time to start recording
 - Set Start Mode - Immediate Start, Press button or Timed Start
 - Select Temperature Unit (C or F).
 - Set Logger Display Time - time logger screen will hold display information
 - Logging Duration - select to manually select time to log temperatures (will auto adjust logging interval)
 - Set Password - set password if required
 - Stop Mode - select press button to stop recording. Deselect to use software to stop recording
 - Time Zone - select UTC Time Zone
 - Trip Number - enter a trip number as required
 - Probe Type - select internal or external for device





- Trip Description - enter information as required
 - Repeat Start - Enable/Disable
 - Circular Logging - Enable to overwrite logger data when full or Disable to stop.
 - Alarm Settings - Select No Alarm or Multiple Alarms to select alarm thresholds required. Click on Alarm checkbox required for either or both upper H1 and lower L1 temperature alarm threshold limits. Enter Alarm Thresholds Temperatures and Alarm Type (Single or Cumulative)
 - Set Alarm Delay period if required
3. When complete click on 'Save Parameter.'
 4. A dialog box will appear to confirm all logger data will be erased.
 5. A "Parameters set successfully" message will appear. Remove the logger from the computer.

Start Recording

1. Press and hold the **▶** button for 5 secs to start the logger until **▶** shows on the screen. The logger will start logging once the Start Delay period set has elapsed.
2. Replace the cover and place it where it is required for logging.

View logger information at any time

1. Press and release **⊙** to shift between display interfaces to view information at any time.
2. Pressing the **▶** button will scroll through to show:
 - current temperature
 - number of readings
 - current time HH:MM
 - date MM:DD
 - maximum temperature recorded,
 - minimum temperature recorded
 - maximum temperature thresholds set.
 - minimum temperature thresholds set.

Stop Recording

1. Press and hold **⏸** for 5 secs to stop the logger until **■** shows in the logger screen. The logger has now stopped logging.

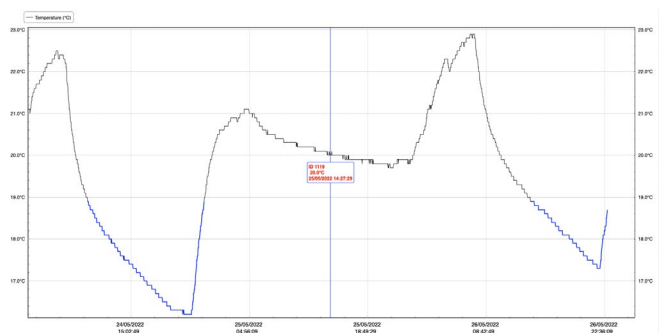
Download Data

1. Remove the lid from the data logger and plug it into a USB port on your PC.
2. Open the Elitech software and wait for the USB to be recognised.
3. The software will open on the summary page and display the device's information. This page will show the statistical information recorded on the logger.

This page provides:

- number of readings.
- the time of the first and last readings.
- mean kinetic temperature.
- maximum temperature.
- minimum temperature.
- average temperature.
- time of the first alarm (if any).

To view a complete breakdown of the data, select 'Graph' from the menu at the top of the screen. A graph will appear displaying all the measured readings.





Clicking on the graph displays the log number, recorded temperature and timestamp for each reading. Alternatively, you can view the data as a complete list by selecting the 'Table' tab

To export and save your collected temperature data, click on the 'Export data' icon at the top right of the page. You can export data as a PDF, Excel or ELT, file.

DATA LOG

File Created At: 05/28/2022 22:57:29



Device Information

Device Code : RC-5+ Probe Type : Temperature(internal)
 Serial Number : EF1216101650 Firmware Version : V2.5
 Mode Code : TLC30A08B

Trip Information

Trip Id : 0000001
 Description : Temperature recording.

Mark Event

N/A

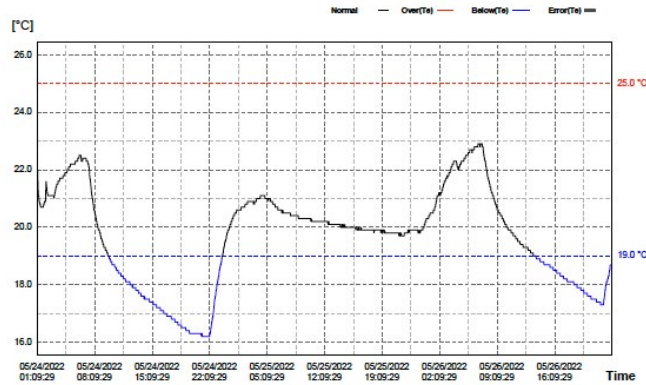
Configuration Information

Start Mode : Manual Log Interval : 2min
 Start Delay : 0s Ring Buffer : Disable
 Time Base : UTC +00:00 Stop Mode : Manual + Software

Alarm Zone	Allow Time	Alarm Type	Total Time	Violations	Status
H3:					
H2:					
H1: over 25.0 °C	0s	Sin	0s 1d 23hr	0	OK
Ideal Region	unlimited				
L1: below 19.0 °C	0s	Sin	22hr 48min	2	ALARM
L2:					

Logging Summary

Highest : 23.0 °C Start Time : 05/24/2022 01:09:29
 Lowest : 16.2 °C Stop Time : 05/28/2022 22:57:29(Manual)
 Average : 19.8 °C Elapsed Time : 2d 21hr 48min
 MKT : 19.8 °C Data Points : 2095
 Alarm At(Te): 05/24/2022 06:55:29



From 05/24/2022 01:09:29 To 05/24/2022 21:07:29

File Created At: 05/26/2022 22:57:29

05/24/2022 23.0 °C	04/26/29 21.8 °C	07/49/29 21.1 °C	11/09/29 18.4 °C	14/29/29 17.5 °C	17/49/29 18.1 °C
01:11/29 21.8 °C	04/31/29 21.8 °C	07/51/29 21.0 °C	11:11/29 18.4 °C	14:31/29 17.5 °C	17:51/29 18.8 °C
01:15/29 21.8 °C	04/35/29 21.8 °C	07:55/29 20.9 °C	11:15/29 18.4 °C	14:35/29 17.5 °C	17:55/29 18.7 °C
01:19/29 21.1 °C	04/39/29 21.8 °C	07:59/29 20.8 °C	11:19/29 18.4 °C	14:39/29 17.5 °C	17:59/29 18.7 °C
01:23/29 21.8 °C	04/43/29 21.8 °C	08:03/29 20.7 °C	11:23/29 18.3 °C	14:43/29 17.5 °C	18:03/29 18.7 °C
01:27/29 20.8 °C	04/47/29 22.0 °C	08:07/29 20.6 °C	11:27/29 18.3 °C	14:47/29 17.5 °C	18:07/29 18.7 °C
01:31/29 20.8 °C	04/51/29 22.0 °C	08:11/29 20.5 °C	11:31/29 18.3 °C	14:51/29 17.4 °C	18:11/29 18.7 °C
01:35/29 20.3 °C	04/55/29 22.1 °C	08:15/29 20.4 °C	11:35/29 18.3 °C	14:55/29 17.4 °C	18:15/29 18.7 °C
01:39/29 20.3 °C	04/59/29 22.2 °C	08:19/29 20.3 °C	11:39/29 18.3 °C	14:59/29 17.4 °C	18:19/29 18.8 °C
01:43/29 20.3 °C	04/63/29 22.2 °C	08:23/29 20.2 °C	11:43/29 18.2 °C	15:03/29 17.4 °C	18:23/29 18.8 °C
01:47/29 20.3 °C	04/67/29 22.1 °C	08:27/29 20.1 °C	11:47/29 18.2 °C	15:07/29 17.4 °C	18:27/29 18.8 °C
01:51/29 20.3 °C	04/71/29 22.2 °C	08:31/29 20.0 °C	11:51/29 18.2 °C	15:11/29 17.4 °C	18:31/29 18.8 °C
01:55/29 20.3 °C	04/75/29 22.2 °C	08:35/29 19.9 °C	11:55/29 18.2 °C	15:15/29 17.4 °C	18:35/29 18.8 °C
01:59/29 20.8 °C	04/79/29 22.2 °C	08:39/29 19.8 °C	11:59/29 18.1 °C	15:19/29 17.3 °C	18:39/29 18.8 °C
02:03/29 20.8 °C	04/83/29 22.2 °C	08:43/29 19.8 °C	12:03/29 18.1 °C	15:23/29 17.3 °C	18:43/29 18.5 °C
02:07/29 20.8 °C	04/87/29 22.2 °C	08:47/29 19.8 °C	12:07/29 18.1 °C	15:27/29 17.3 °C	18:47/29 18.5 °C
02:11/29 21.3 °C	04/91/29 22.2 °C	08:51/29 19.7 °C	12:11/29 18.1 °C	15:31/29 17.3 °C	18:51/29 18.5 °C
02:15/29 21.3 °C	04/95/29 22.2 °C	08:55/29 19.7 °C	12:15/29 18.1 °C	15:35/29 17.3 °C	18:55/29 18.5 °C
02:19/29 21.3 °C	04/99/29 22.2 °C	08:59/29 19.6 °C	12:19/29 18.1 °C	15:39/29 17.3 °C	18:59/29 18.5 °C
02:23/29 21.2 °C	05/03/29 22.2 °C	09:03/29 19.6 °C	12:23/29 18.1 °C	15:43/29 17.3 °C	19:03/29 18.4 °C
02:27/29 21.1 °C	05/07/29 22.2 °C	09:07/29 19.5 °C	12:27/29 18.1 °C	15:47/29 17.3 °C	19:07/29 18.4 °C
02:31/29 21.1 °C	05/11/29 22.3 °C	09:11/29 19.4 °C	12:31/29 18.0 °C	15:51/29 17.2 °C	19:11/29 18.4 °C
02:35/29 21.1 °C	05/15/29 22.3 °C	09:15/29 19.4 °C	12:35/29 18.0 °C	15:55/29 17.2 °C	19:15/29 18.4 °C
02:39/29 21.1 °C	05/19/29 22.3 °C	09:19/29 19.3 °C	12:39/29 18.0 °C	15:59/29 17.2 °C	19:19/29 18.4 °C
02:43/29 21.1 °C	05/23/29 22.3 °C	09:23/29 19.3 °C	12:43/29 18.0 °C	16:03/29 17.2 °C	19:23/29 18.4 °C
02:47/29 21.1 °C	05/27/29 22.3 °C	09:27/29 19.2 °C	12:47/29 18.0 °C	16:07/29 17.2 °C	19:27/29 18.4 °C
02:51/29 21.1 °C	05/31/29 22.3 °C	09:31/29 19.2 °C	12:51/29 17.9 °C	16:11/29 17.1 °C	19:31/29 18.4 °C
02:55/29 21.1 °C	05/35/29 22.3 °C	09:35/29 19.2 °C	12:55/29 17.9 °C	16:15/29 17.1 °C	19:35/29 18.4 °C
02:59/29 21.1 °C	05/39/29 22.3 °C	09:39/29 19.1 °C	12:59/29 17.9 °C	16:19/29 17.1 °C	19:39/29 18.4 °C
03:03/29 21.1 °C	05/43/29 22.3 °C	09:43/29 19.1 °C	13:03/29 17.9 °C	16:23/29 17.1 °C	19:43/29 18.3 °C
03:07/29 21.1 °C	05/47/29 22.3 °C	09:47/29 19.0 °C	13:07/29 17.8 °C	16:27/29 17.1 °C	19:47/29 18.3 °C
03:11/29 21.1 °C	05/51/29 22.4 °C	09:51/29 19.0 °C	13:11/29 17.8 °C	16:31/29 17.1 °C	19:51/29 18.3 °C
03:15/29 21.1 °C	05/55/29 22.4 °C	09:55/29 19.0 °C	13:15/29 17.8 °C	16:35/29 17.1 °C	19:55/29 18.3 °C
03:19/29 21.2 °C	05/59/29 22.4 °C	09:59/29 18.9 °C	13:19/29 17.8 °C	16:39/29 17.1 °C	19:59/29 18.3 °C
03:23/29 21.2 °C	06/03/29 22.4 °C	10:03/29 18.9 °C	13:23/29 17.8 °C	16:43/29 17.1 °C	20:03/29 18.3 °C
03:27/29 21.2 °C	06/07/29 22.4 °C	10:07/29 18.8 °C	13:27/29 17.7 °C	16:47/29 17.0 °C	20:07/29 18.3 °C
03:31/29 21.2 °C	06/11/29 22.4 °C	10:11/29 18.8 °C	13:31/29 17.7 °C	16:51/29 17.0 °C	20:11/29 18.3 °C
03:35/29 21.2 °C	06/15/29 22.4 °C	10:15/29 18.7 °C	13:35/29 17.7 °C	16:55/29 17.0 °C	20:15/29 18.3 °C
03:39/29 21.2 °C	06/19/29 22.4 °C	10:19/29 18.7 °C	13:39/29 17.7 °C	16:59/29 17.0 °C	20:19/29 18.3 °C
03:43/29 21.2 °C	06/23/29 22.4 °C	10:23/29 18.7 °C	13:43/29 17.7 °C	17:03/29 17.0 °C	20:23/29 18.3 °C
03:47/29 21.2 °C	06/27/29 22.4 °C	10:27/29 18.7 °C	13:47/29 17.7 °C	17:07/29 17.0 °C	20:27/29 18.3 °C
03:51/29 21.2 °C	06/31/29 22.4 °C	10:31/29 18.7 °C	13:51/29 17.7 °C	17:11/29 17.0 °C	20:31/29 18.3 °C
03:55/29 21.3 °C	07/05/29 22.4 °C	10:35/29 18.6 °C	13:55/29 17.6 °C	17:15/29 16.9 °C	20:35/29 18.3 °C
03:59/29 21.3 °C	07/09/29 22.4 °C	10:39/29 18.6 °C	13:59/29 17.6 °C	17:19/29 16.9 °C	20:39/29 18.3 °C
04:03/29 21.3 °C	07/13/29 22.4 °C	10:43/29 18.6 °C	14:03/29 17.6 °C	17:23/29 16.9 °C	20:43/29 18.3 °C
04:07/29 21.3 °C	07/17/29 22.4 °C	10:47/29 18.5 °C	14:07/29 17.6 °C	17:27/29 16.9 °C	20:47/29 18.3 °C
04:11/29 21.3 °C	07/21/29 22.4 °C	10:51/29 18.5 °C	14:11/29 17.6 °C	17:31/29 16.9 °C	20:51/29 18.3 °C
04:15/29 21.3 °C	07/25/29 22.4 °C	10:55/29 18.5 °C	14:15/29 17.6 °C	17:35/29 16.9 °C	20:55/29 18.3 °C
04:19/29 21.3 °C	07/29/29 22.4 °C	10:59/29 18.5 °C	14:19/29 17.6 °C	17:39/29 16.9 °C	20:59/29 18.3 °C
04:23/29 21.3 °C	07/33/29 22.4 °C	11:03/29 18.4 °C	14:23/29 17.6 °C	17:43/29 16.9 °C	21:03/29 18.3 °C
04:27/29 21.3 °C	07:37/29 22.4 °C	11:07/29 18.4 °C	14:27/29 17.6 °C	17:47/29 16.9 °C	21:07/29 18.3 °C
04:31/29 21.3 °C	07:41/29 22.4 °C	11:11/29 18.4 °C	14:31/29 17.6 °C	17:51/29 16.9 °C	21:11/29 18.3 °C
04:35/29 21.3 °C	07:45/29 22.4 °C	11:15/29 18.4 °C	14:35/29 17.6 °C	17:55/29 16.9 °C	21:15/29 18.3 °C
04:39/29 21.3 °C	07:49/29 22.4 °C	11:19/29 18.4 °C	14:39/29 17.6 °C	17:59/29 16.9 °C	21:19/29 18.3 °C
04:43/29 21.3 °C	07:53/29 22.4 °C	11:23/29 18.4 °C	14:43/29 17.6 °C	18:03/29 16.9 °C	21:23/29 18.3 °C
04:47/29 21.3 °C	07:57/29 22.4 °C	11:27/29 18.4 °C	14:47/29 17.6 °C	18:07/29 16.9 °C	21:27/29 18.3 °C