

**SHOCKWATCH®**

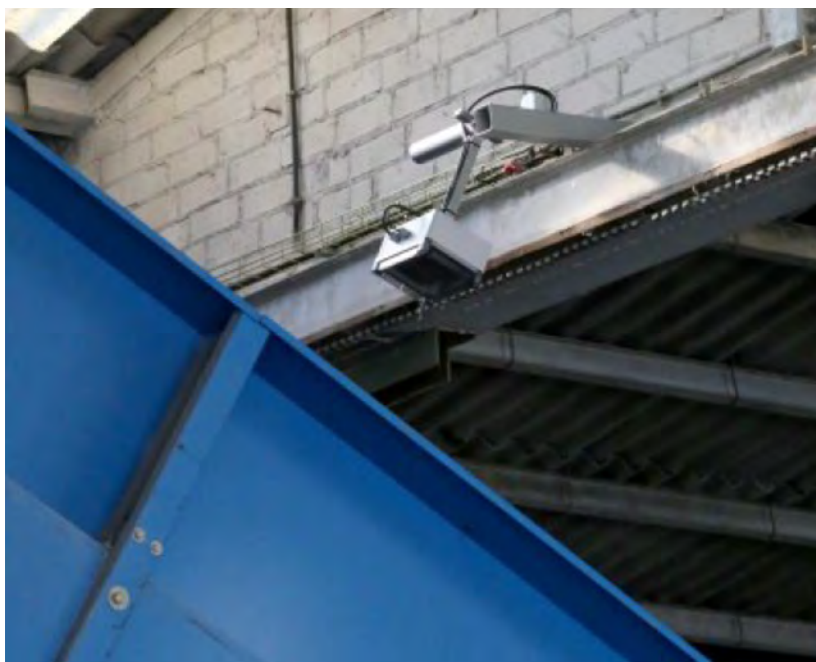
Damage Prevention and Safety Solutions



# Hazardous Area System (HAS)



**Intelligent  
detection systems  
that don't treat  
humans like trash.**



## Be seen, not hurt.

The ShockWatch Hazardous Area System (HAS) by Claitec protects all employees working in dangerous areas from a potential fall onto a conveyor belt, preventing serious accidents by an automatic machine shutdown.

All operators are required to wear electronic tags in order to be detected.

Machines and/or conveyor belts are fitted with detection antennas. A Test Tag device checks the enabling of the system.

Detection distance is adjustable between 1 and 6.5 meters to detect any person wearing a tag who accidentally falls onto the machinery in this range.

The machine is stopped automatically to prevent any serious or fatal accident.

Events are recorded in the Control Unit.

### Areas Of Application

- Presses and crushing machines, compactors
- Perimeter detection of pits
- Recycling plants
- Paper and chemical industry
- Forbidden areas of access
- Hazardous machinery to detect a proximity alarm

### Advantages

- Reduction of accidents
- Reduction of accident compensation
- Differentiation from other solutions that do not discriminate between obstacles and people

**How it Works:** <https://shockwat.ch/HAS>

# System Components.

## Machine Components.



**RF Activator  
(AC-50)**

Used to detect a T-10R Tag when in the detection zone set



**Protection Box  
for RF Activator  
(AC-50)**

Encloses the RF Activator (AC-50) for protection



**Test Tag  
(TZ2)**

Failsafe device that ensures system is operating correctly



**Control Unit  
(UP-50)**

Controls the system. Used to shutdown the machinery

## Pedestrian Tags and Charging.



**Rechargeable  
Pedestrian Tag  
(T-10R)**

Includes LED light, sound, and vibration alert. 3 colour indication of battery levels. 30-day battery life



**Wireless  
Rechargeable Tag  
(T-10R) Station**

Charging base for up to 12 Rechargeable Pedestrian Tags. (T-10R)



**Wireless  
Rechargeable Tag  
(T-10R) Base**

Charging base for single Rechargeable Pedestrian Tag (T-10R)

## Support Options.



**Fixed Metal Support for  
RF Activator  
(AC-50)**

Fixed metal support to mount the RF Activator (AC-50) in Protection Box over the machinery



**Adjustable Metal  
Support for RF Activator  
(AC-50)**

Adjustable metal support to mount the RF Activator (AC-50) over the conveyor or similar



**Adjustable Wall Mount  
Support for RF Activator  
(AC-50)**

Wall mount support to mount the RF Activator (AC-50) in Protection Box over the machinery

## Optional Accessories.

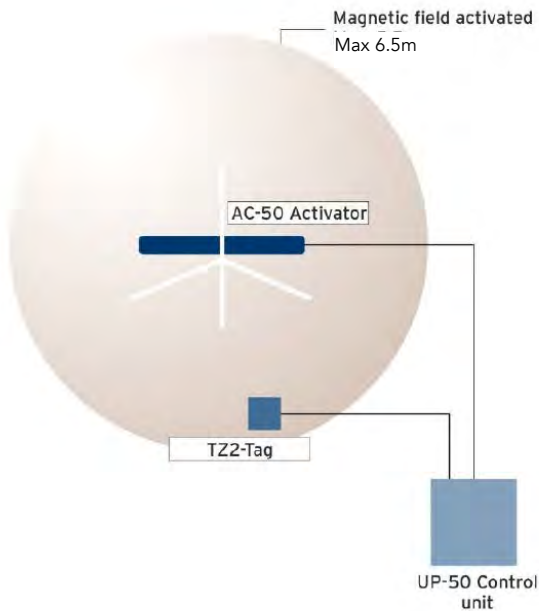


**T-10R TAG  
Verification  
Antenna (AV-30)**

Verify the status of the batteries and the correct functioning of the T-10R Tags RF communication

# How it works.

## Installation Layout



The RF Activator (AC-50) is mounted on either a metal support or wall mount over the machinery in a protection box. The detection distance is set to the desired range up to 6.5m

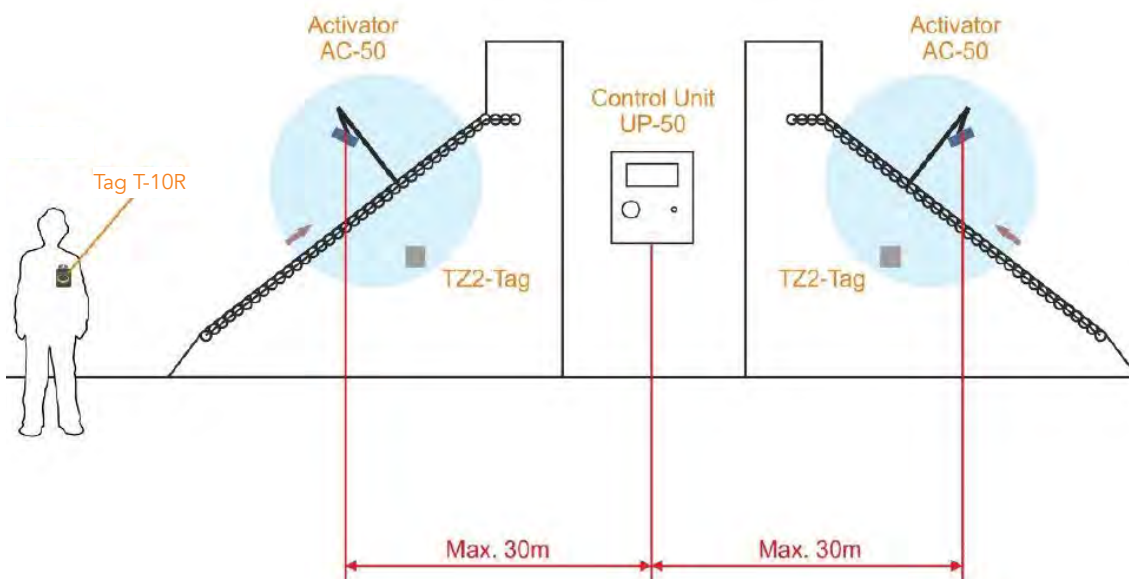
The TZ2 Tag is mounted within the RF Activator (AC-50) detection range that has been set.

The Control Box (UP-50) should be mounted within 30m of the RF Activator (AC-50) and the TZ2 Tag.

The RF Activator (AC-50) and TZ2 Tag are wired into the Control Unit (UP-50)

If a pedestrian wearing a T-10R Tag falls onto the machinery and enters the detection range set, a signal is sent to the UP-50 Control Box and the machinery will be immediately shutdown.

## Installation Distances



# UP-50 Control Unit

The operators wear a T-10R Tag. When the T-10R Tag is detected within the set danger zone, The AC-50 receives this signal and in turn forwards a signal to the Control Unit (UP-50).

The Control Unit (UP-50) immediately shutdown the machine.

## Alarm Screens

Depending on the type of alarm raised, the Control Unit (UP-50) screen will show one of several messages.

### “Key Fob Detected” ALARM

When a T-10R Tag is detected within the danger zone, a **Keyfob Detected** message will appear on the screen of the Control Unit (UP-50).

The RF Activator (AC-50) antenna has detected an operators T-10R Tag and the machine will be shutdown.



### “Key Fob Button Activated Manually” ALARM

When an operator has pressed the T-10R emergency button, the machine will be shutdown and a **Key Fob Button Activated Manually** message will appear on the screen of the Control Unit.



### “Lost Communication With The Gateway” ALARM

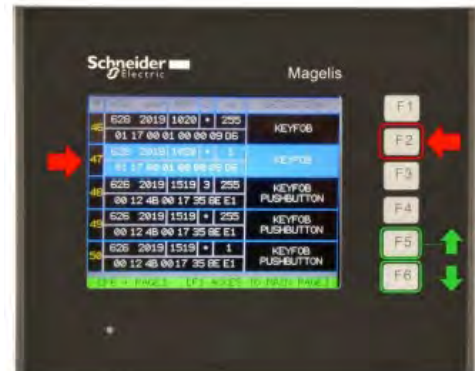
If a **Lost Communication With The Gateway** message appears on the screen, the Control Unit is not able to detect the RF Activator (AC-50) or TZ2 Tag.

Wiring will need to be checked to the Control Unit and the RF Activator (AC-50) and TZ2 Tag.



## Data Record Screen.

The Data Record screen displays information about any personnel that have come into the detection zone with the date and time recorded, the Mac address of the detected T-10R Tag and the type of detection.



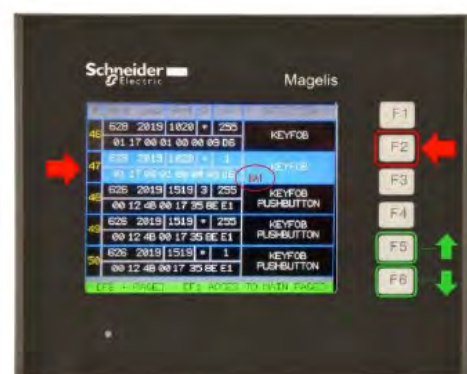
## Reset Button.

When an alarm has occurred, the system can be reset using the reset button on the outside of the Control Unit (UP-50)

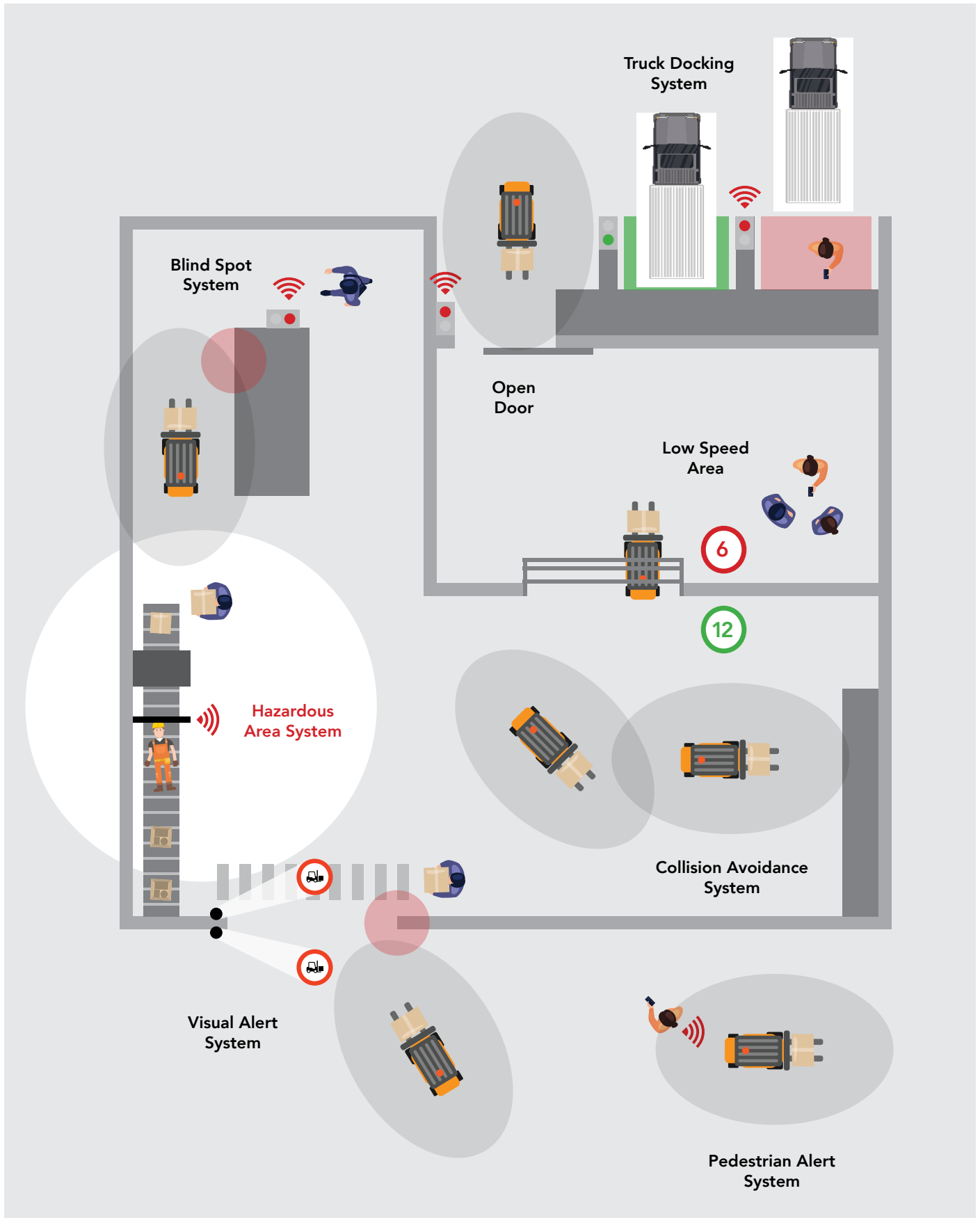


## Tag Detection with Low Battery.

When a T-10R Tag is detected in the detection zone with a low battery, the Control Unit immediately stops the machine and the blue light is activated. The T-10R Tag should be now charged. The Low Battery message in the Control Unit will need to be acknowledged to turn off the blue light.



# The ShockWatch range of Accident Prevention Solutions.





# Our Clientele.

## Australia



## Worldwide



# SHOCKWATCH®

Damage Prevention and Safety Solutions

1300 074 625

[solutions@shockwatch.com.au](mailto:solutions@shockwatch.com.au)

[shockwatch.com.au](http://shockwatch.com.au)

Apr 2022

  
claitec