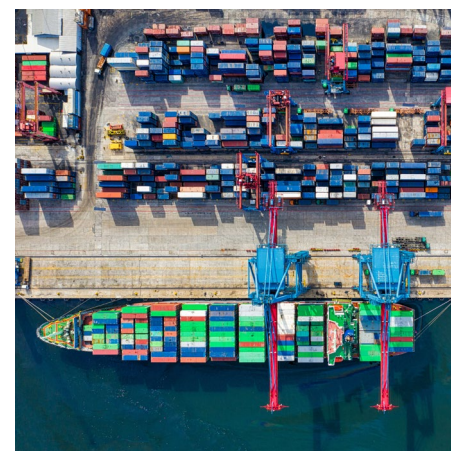
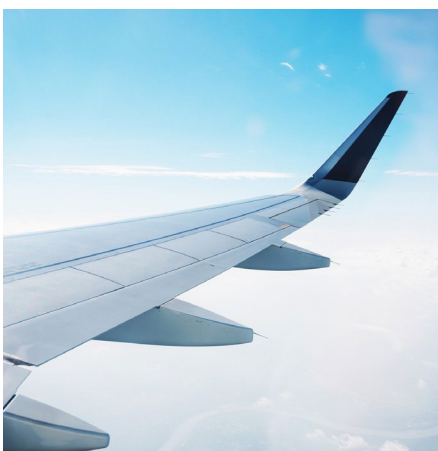




# SpotBot Cellular Impact Recorder



- Access to data from anywhere with a dedicated web portal
- Real-time reporting and tracking of incidents
- Alarms with location, time, impact g-level, direction of impact, and temperature
- Impacts-over-time visualisation of each asset
- Histogram of asset impacts
- Temperature-over-time graph

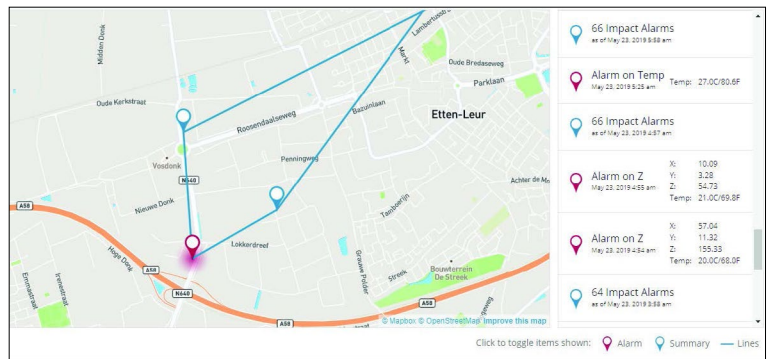
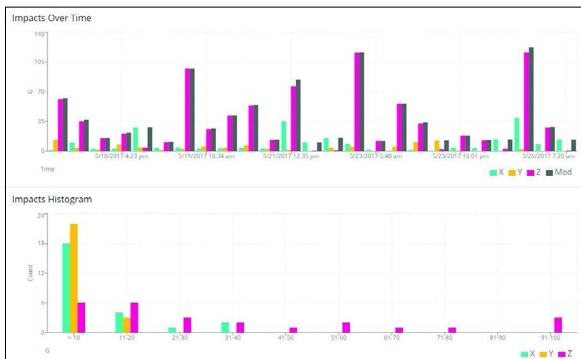
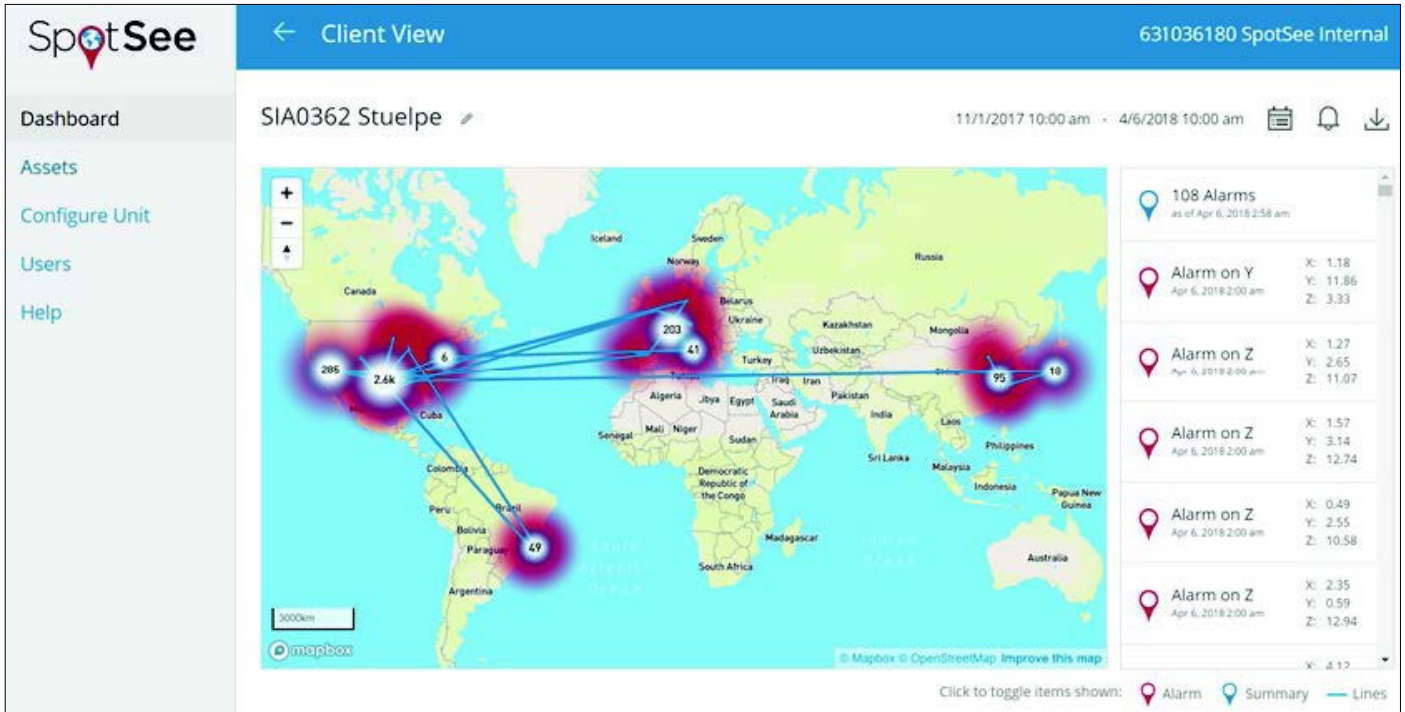
Products damaged during transport? By using SpotBot Cellular to track cargo through the supply chain, you can pinpoint issues during transportation so that they can be remedied and avoided in the future. The visibility to impact and temperature data that SpotBot Cellular provides can help you realise significant savings of both time and money by ensuring that your product reaches the customer without incident.

SpotBot Cellular is a standalone device that delivers tri-axial impact monitoring, temperature recording and location tracking through cellular connectivity. It features real-time visualisation through the SpotSee Cloud. Access your data in the cloud from any web-based device. The unit transmits information using cellular technology, so it does not require line of sight to a satellite for position or communication.

## Features

**Best in Class Impact Data** – SpotBot Cellular generates accurate data on impacts up to 65G, providing more than four times (4X) the range of the best competitive alternative (which captures impacts up to 16G). The SpotBot Cellular range of impact monitoring is best suited for products between 45-27,000kg.

**Longest Battery Life** – With off-the-shelf lithium batteries, SpotBot Cellular delivers 80 days of monitoring (set to hourly summary reporting). This represents a battery life that is 50% (1.5X) more than next best competitor.



**Flexible Settings & Download**

**Capabilities** – The user easily defines impact and temperature settings specific to the product being monitored and SpotBot Cellular will deliver a location and time stamp of alerts from conditions over the threshold. After the trip, the user can easily download a PDF file with the top ten largest impacts, a CSV file with the top 50 largest impacts, and a slot-time report from the SpotBot Cellular.

**Real-time Reporting**

If an unacceptable impact on temperature condition occurs the SpotSee Cloud receives that information in real-time (notifications can be set up to deliver alerts immediately to concerned parties). Summary information is sent to the cloud at predetermined intervals so you always know the status of your asset.

**Detailed Alarm Data**

See all your asset alarms including location, time, impact g-level, direction of impact and temperature. View excursions over time so you can easily spot areas of concern.

The histogram is a quick view of the units impacts grouped by g-level so you know quickly if repeated impacts may be the cause of damage.