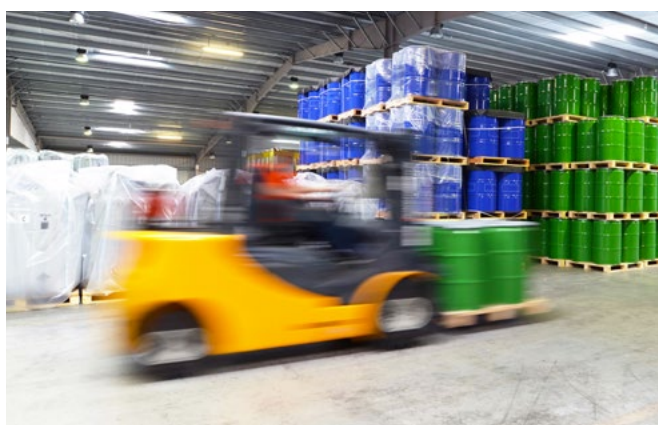


SHOCKWATCH®

Damage Prevention and Safety Solutions



Pedestrian Crossing Safety (PCS)

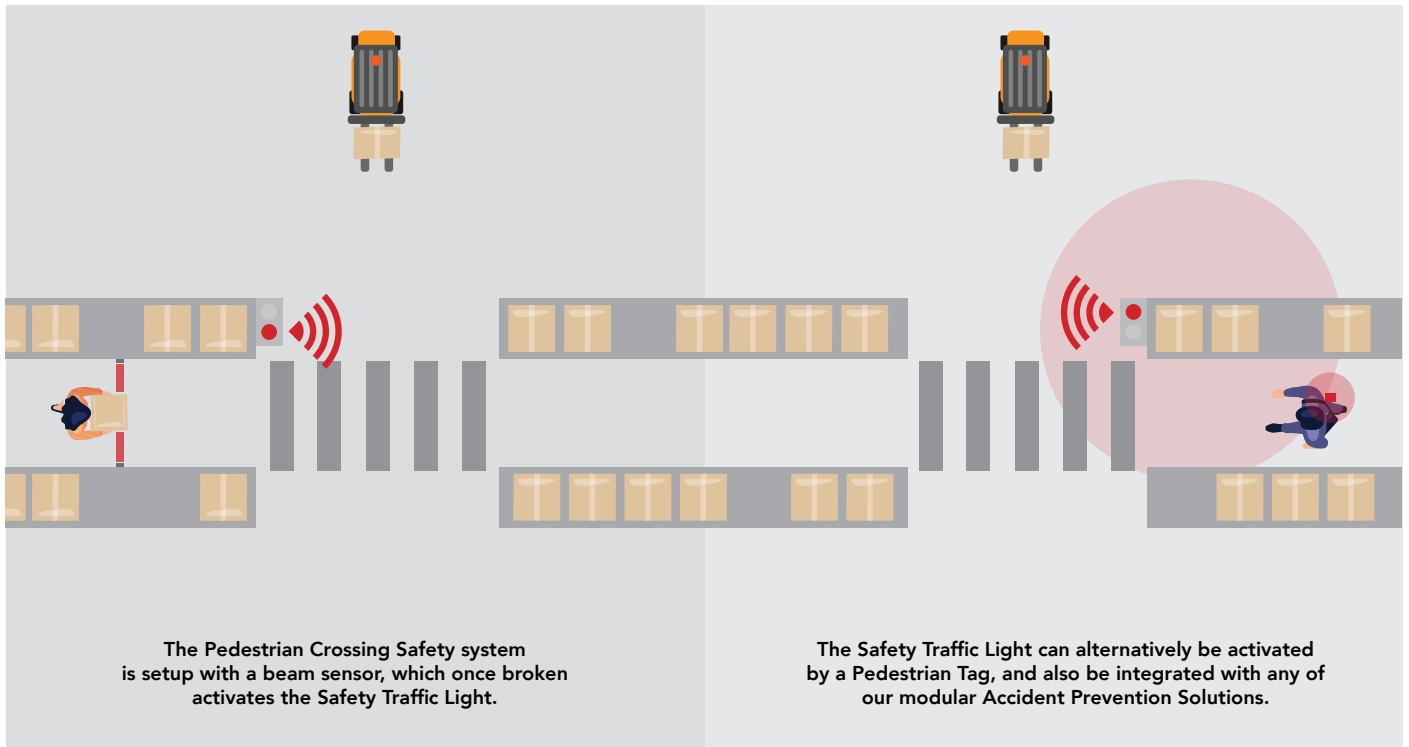


Now pedestrians and forklifts can see each other.

The ShockWatch Pedestrian Crossing Safety (PCS) system minimises the risk of collisions between forklifts and pedestrians in areas of high pedestrian traffic.

Pedestrians can activate the unit by either infrared beam or wearable Pedestrian Tags. The PCS system can also be integrated with any one of the modular ShockWatch Accident Prevention Solutions.

How It Works.



System Components.



Safety Traffic Light

Alerts other forklift drivers and pedestrians of occupied aisle



System Control Box

Powers and controls the system, including the detection sensors



Infrared Beam Sensor

Beam sensors are a simple, cost-effective way to detect pedestrian activity.



Rechargeable Pedestrian Tag

Includes LED light, sound, and vibration alert. 3 colour indication of battery levels.

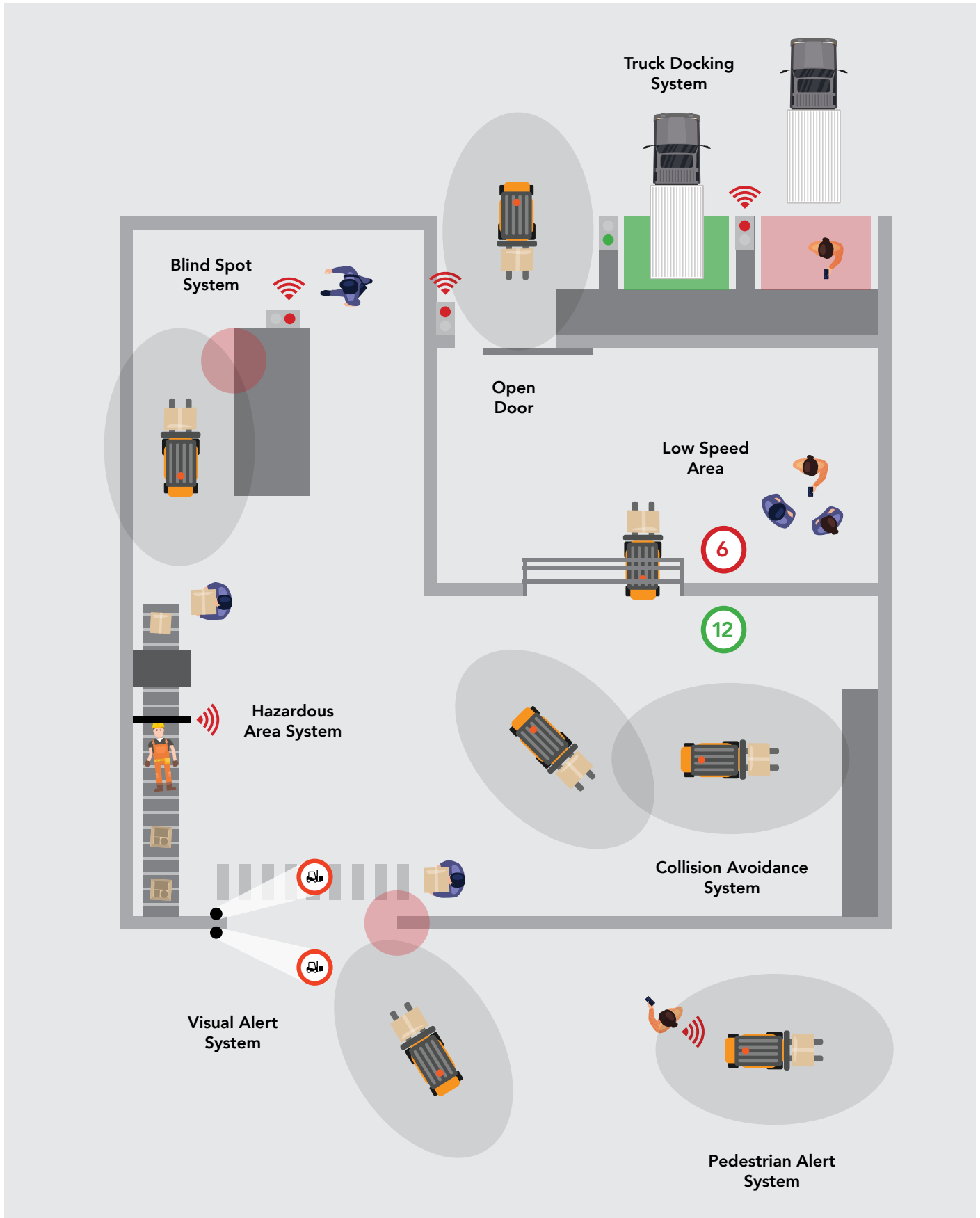
Advantages

- Detection of trucks in the proximity of the traffic light and adjacent corridors
- Easy installation
- Durable and robust system components
- Flexible and scalable, suits most applications

Areas of Application

- Confined areas
- Poor visibility areas at junctions between forklifts
- Areas with high forklift traffic

The ShockWatch range of Accident Prevention Solutions.



Our Clientele.

Australia



Worldwide



SHOCKWATCH®

Damage Prevention and Safety Solutions

1300 074 625

solutions@shockwatch.com.au

shockwatch.com.au

Jun 2020


claitec
I N S I D E