



SpotBot Cellular Impact Recorder Quick Start Guide

Step 1: Activate the SpotBot

A. If this is the first connected device purchase for your company, you must establish an account admin. This person will be responsible for managing user access to the SpotSee Cloud.

B. Navigate to activate.spotsee.io to begin the activation process (Figure 1).

Enter the Customer Number found on the packing list that shipped with the SpotBot, the SpotSee invoice or order acknowledgement.

Enter the Unit ID found on the front label of the SpotBot. Accept the Terms and Conditions. Click Activate.

C. Enter the admin email address in the pop-up box and click Enter.

An email will be sent to the Admin's email address from **no-reply@shockwatch.com**

Note: If the email is not received within 5 minutes, please check your spam or junk folders. If it has still not been received, please contact SpotSee technical support.

D. Follow the link in the email to create your password.

Note: Steps C and D will only be necessary the first time an account is set up on the SpotSee Cloud.

E. A message will prompt you to select an available contract for the unit. Click the dropdown list to select a contract. Click Activate (Figure 2).

Note: Multiple contracts may exist for your account. Select the contract that you wish to match to the specific SpotBot unit being activated.

F. Your SpotBot unit has now been activated (Figure 3).

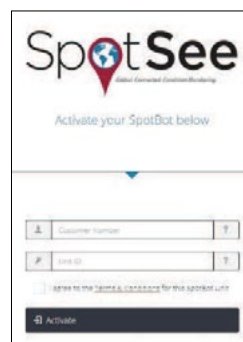
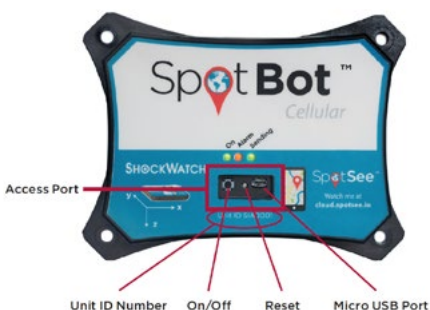


Figure 1

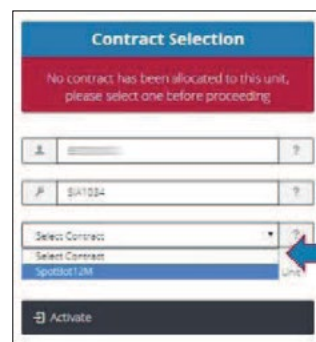


Figure 2



Figure 3



Step 2: Set Up of Additional Users

- Navigate to **cloud.spotsee.io** and log in using the ADMIN email address and password created in STEP 1
- Click on 'Users' in the column on the left side of the web page
- Click on Plus Sign in upper right of screen
- Insert (Name, Email Address, and Mobile Phone #) and Select the Role for the New User
- Click 'Add'

An email will be immediately sent to the New User which will prompt them to set up a Password

- Repeat this process for any additional users

Step 3: Battery Installation

- Remove SpotBot Unit and batteries from the box
- Unscrew Battery Panel (Figure 4)
- Install the (6) AA batteries provided in the direction notated within each battery slot and replace Battery Panel making sure that CE sticker is visible. Tighten the screws on the battery cover to a torque setting of 116-121 inch-ounces to preserve IP ratings

Step 4: Configure SpotBot Unit

- Navigate to **cloud.spotsee.io** and login using the email and password that were generated during the User Set Up process by the ADMIN

- Click on 'Configure Unit' in the column on the left side of the web page
 - Go to initial setup and follow the steps for your chosen browser. Click 'Launch Configuration Application' to launch and run the SpotBot Software
 - Remove the rubber cover from the front of your SpotBot Unit
 - Connect your computer to the SpotBot using the Micro-USB Cable provided
 - Push the 'Start/Stop' button the front of the SpotBot Unit Unit ID will appear within the Profile Pop Up Window (Figure 5)
 - Select the desired 'Alarm Threshold'
- Note: Impacts at a G-level above the 'Alarm Threshold' will send alarms visible in the SpotSee Cloud**



Figure 4

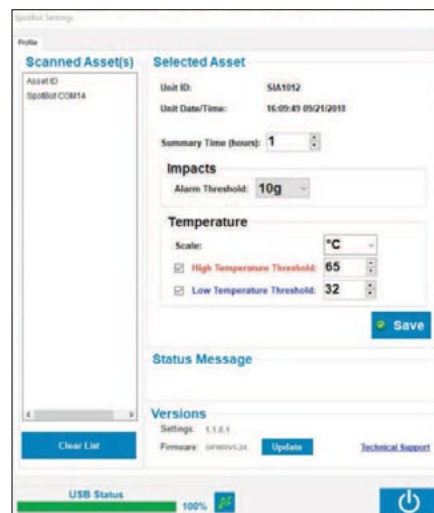


Figure 5



H. Select desired 'Summary Time'

Note: Summary time dictates the interval that the SpotBot will send impact, location, and temperature summaries to the SpotSee cloud. Less frequent intervals will improve battery life.

I. Enable and set temperature alarms
Note: High and/or low temperature thresholds may be enabled and set

J. Click 'Save'. Status message will appear noting 'Save Successful'

K. Close the configuration window and unplug the Micro-USB Cable

L. Replace the rubber cover

Step 5: SpotBot In Use

A. Begin Monitoring – Press 'Start/Stop' Button in the Access Port. The 'On' and 'Sending' lights will both flash green (Figure 6).

B. In Use (No Alarm) – When SpotBot is in use and not in process of sending an alarm to the SpotSee Cloud the 'On' light will flash green every minute if no alarm has occurred. This light will flash yellow if the unit has low battery life remaining.

C. In Use (Alarm) – If an alarm has occurred, the red 'Alarm' light and the green 'On' light will flash every minute.

D. Alarm Triggered – When SpotBot experiences an impact above the 'Alarm

Threshold' the 'Alarm' (red) as well as the 'On' and 'Sending' (green) lights will flash at different intervals. The lights continue to flash as the SpotBot Unit sends the alarm data to the SpotSee Cloud.

E. Unit Status Check – To check the status of the SpotBot Unit, press the 'On/Off' button for 1 second. If the 'On' light flashes green and the 'Alarm' light flashes red, an alarm has occurred. If the 'Alarm' light does not flash, then no alarm has occurred.

F. Stop Monitoring – Press and hold the 'On/Off' button (for approximately 5 seconds) until all (3) lights stop flashing and remain on (Figure 7).



Figure 6



Figure 7