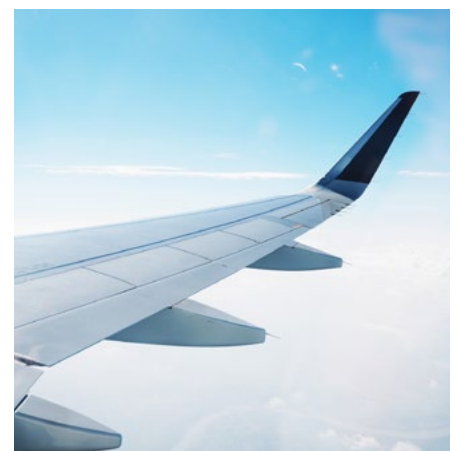
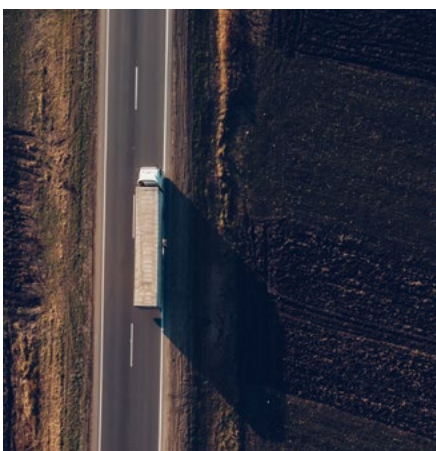




ShockLog Cellular



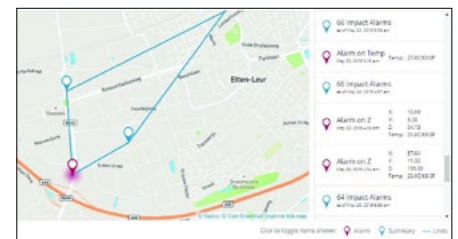
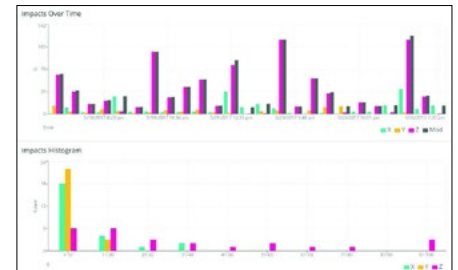
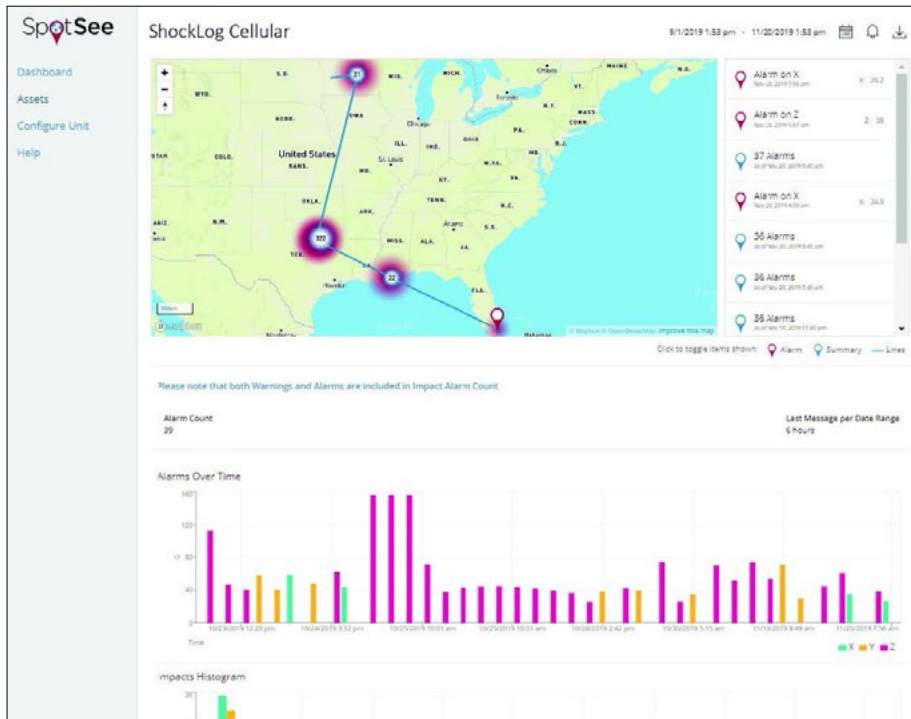
- Real-time notification of out-of-tolerance handling conditions
- Easy-to-use cloud-based interface that is accessible anywhere in the world
- Global low-cost connectivity with no roaming charges
- Robust battery life ideal for long journeys
- Connects to any new or existing ShockLog 298*

The ShockLog Cellular combines the powerful monitoring capabilities of the ShockLog 298 impact recorder with a cellular communication module to deliver real-time notifications of unacceptable handling in the supply chain. This device alerts you when your shipment has experienced an out-of-tolerance impact, temperature, humidity, tilt, roll, or pressure condition. The information is accessible via the user-friendly SpotSee Cloud from anywhere in the world.

With cargo loss exceeding \$50 billion annually, transparency in the supply chain is key to improving your operations. The ShockLog Cellular enables you to know that your assets are travelling safely to their destination and if something has gone wrong, you know when and where the issue occurred.

SpotSee Cloud Features

- Access to your data from anywhere through a secure web portal
- Real-time reporting and tracking of incidents
- Alarms with location, time, and out of tolerance condition
- Impacts-over-time visualization of each asset
- Histogram of the total impacts to an asset
- Time-temperature, humidity, tilt/roll graphs



ShockLog Analysis Software

At the end of the journey, if alarm conditions need to be further analysed, the full data set can be downloaded

into the ShockLog software for a more detailed view of the recorded data. The ShockLog Report View provides an overview of the entire journey: peak acceleration values for all three axes, detailed impact curves, and

temperature. Additional parameters may be evaluated if the ShockLog has additional sensors installed: humidity, pressure, tilt, roll.

Key Specifications

Temperature Range	-30°C to 85°C / -22°F to 185°F
Dimensions	178mm x 133.5mm x 35mm
Weight	590g (w/ batteries) / 500g (w/out batteries)
Battery Type	6 x 1.5V AA alkaline*
Battery Life	Up to 75 days (1 summary/hr) / Up to 190 days (1 summary/day)
Sealing	IP67
Communication	Global cellular 3G/2G with no roaming charges

*Always use lithium batteries for journeys where the temperature may be outside the -5°C to +50°C range. The capacity of alkaline batteries drops dramatically when exposed to temperatures below 10°C. If using a lithium battery and the ShockLog will be traveling by air, make sure the battery is approved for air cargo. If the batteries are accidentally installed with the wrong polarity, the ShockLog will not be damaged; however, the life of the battery may be severely affected.