

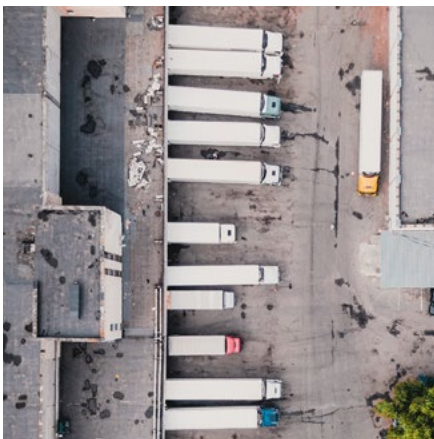
# ColdChain Complete Temp Indicators

- Irreversible evidence of exposure to unacceptable temperature
- Enables easy accept/reject decision
- Aids in regulatory guidelines compliance
- Field-armable indicators that require no special packaging
- Available in pre-armed configurations for high-volume

How can you be sure that unacceptable temperature during transit has not compromised your product's quality and efficacy?

Refrigeration equipment is not always reliable. Temperatures can vary dramatically during transit – trailer, distribution centers, storage. Your product may encounter unexpected delays in areas with less than ideal conditions.

Cold Chain Complete time-temperature indicators provide a cost-effective tool for monitoring the temperature of your package. They are single-use devices that provide accurate, irreversible evidence of a temperature excursion. With the information you gather from these indicators, you can make smarter decisions across your cold chain.



## Specifications

Temperature Threshold	2°- 8°C/36°- 46°F; 0°- 8°C/32°- 46°F; 2°- 25°C/36°- 77°F; 0°- 25°C/32°- 77°F;
Activation Time	Freeze Indicator: Immediate / Warm Indicator: 8 hours
Accuracy of Temperature	±1°C / 2°F
Shelf Life	1 year