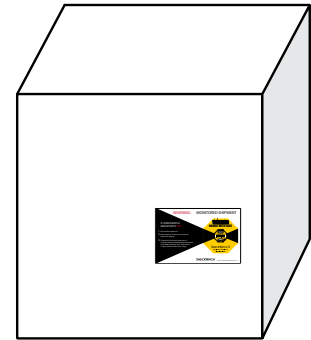


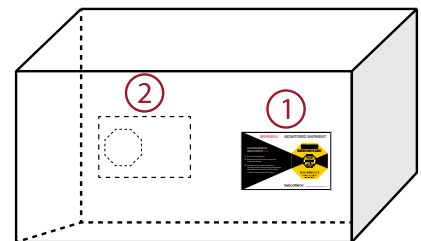
1. Mount the ShockWatch 2 Impact Indicator in the lower third of the package/pallet as close to the edge as possible. Avoid the centre of the package because the mounting locations should be structurally sound.



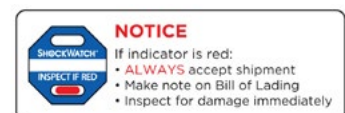
When applying a ShockWatch 2, it is important that you press down firmly on the centre of the device once on the package to ensure adhesion. Failure to press down on the centre of the device will not appropriately activate the intended adhesion increasing the risk of it falling off the package.



2. If the package is twice as long as it is wide, use two ShockWatch 2 Impact Indicators. Place a second indicator in the same position on the opposite side of the package.



3. Place the Alert Sticker on your bill of lading as a reminder to receivers to check the ShockWatch 2 indicator immediately upon arrival.



4. While these instructions are considered best practices, each situation may be different. If you have any further questions call us on 1300 074 625.

5. To reorder, call us on 1300 074 625 or email solutions@shockwatch.com.au