

ShockWatch® RFID Technical Data

The ShockWatch® RFID impact indicator is an intuitive solution for detecting mishandling of sensitive products. Simply mount the indicator on the outside of your package and begin monitoring. A distinctive white to red colour change informs you if your product may have been compromised due to mishandling.

FEATURES



Acts as a visual deterrent to mishandling

Expands the utility of RFID with damage monitoring

Reduces receiving times and isolates items that need inspection

Reduces mishandling through awareness

Helps identify trouble spots in the supply chain—from production to transportation to storage

CONTENTS

Specifications	2
Storage Conditions	2
ShockWatch Activation	3
Activation Graphs - Response Curves	3
How to Use the ShockWatch RFID	7
Mounting Best Practices	7
Accessories & Related Products	8
Quality	8
Ordering Information	8
Technical Support	8

SPECIFICATIONS

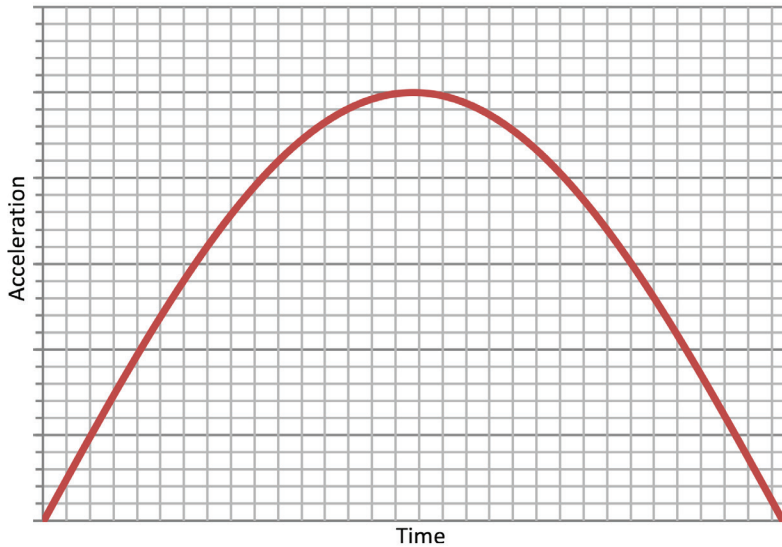
KEY SPECIFICATIONS

Indication Type	RFID, visual green to red colour change
Activation Method	Armable
Security	Tamperproof, Serialised
Operating Temperature Range	-25°C to 80°C / -13°F to 176°F
RFID Type	ISO 18000-6 / EPC Gen 2
Impact Sensitivities	5G, 10G, 15G, 25G, 37G, 50G, 75G
Impact Duration	0.5 to 50 msec
Accuracy	+15% at 20°C / 68°F, 1 ATM
Product Life	2 years from date of manufacture when stored at 20°C / 68°F, 1 ATM
Storage Recommendations	20°C / 68°F, 1 ATM, 0-99% RH Non-condensing
Dimensions	1.69 in x 1.69 in x 0.25 in 42.93 mm x 42.93 mm x 6.35 mm

SHOCKWATCH ACTIVATION

Two components comprise an impact – amplitude of acceleration (G) and duration of impact (msec). These components are illustrated in the graph below. The area under the curve represents the change in velocity (Δv).

ShockWatch impact indicator shock response curves are based on a half-sine shock pulse (shown below). A time, acceleration point on the half-sine curve can be correlated to the same point on the ShockWatch activation graph response curves.



ACTIVATION GRAPHS - RESPONSE CURVES

The vertical axis of each ShockWatch impact indicator activation curve shows a linear scale and is titled “Acceleration” or G. A “G” is a multiple of the acceleration due to gravity (32.2ft/s² or 9.8m/s²).

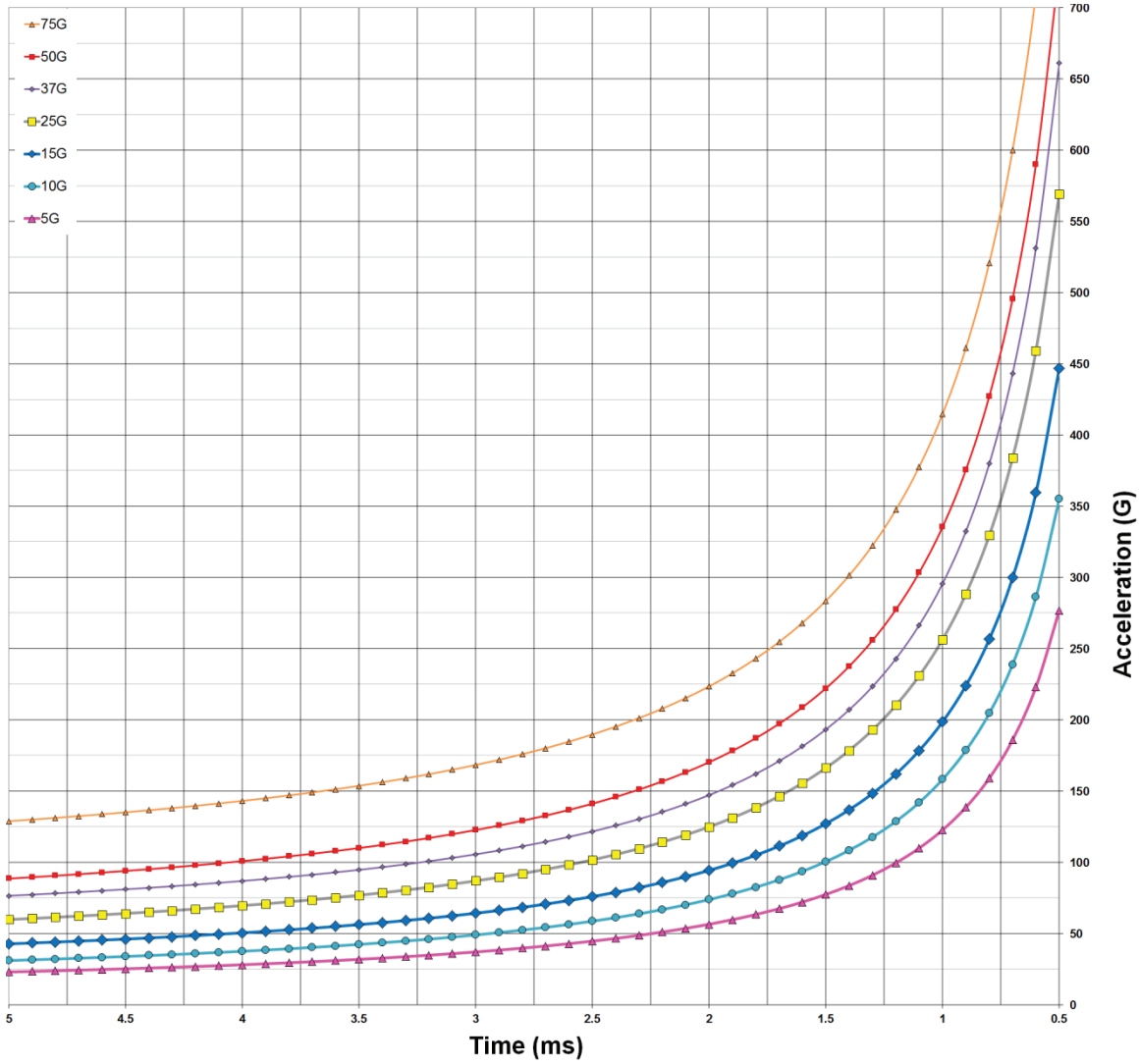
The horizontal axis of the graph shows a linear scale for time and represents the time duration. The unit of measure for this scale is milliseconds.

The most critical thing to observe from the curve is that as duration decreases, acceleration increases. Each ShockWatch impact indicator has a minimum G-threshold that must be exceeded before it will activate. The minimum G-level for each ShockWatch impact indicator is the leftmost G-value on the curve (the G-value where the shock curve intersects the left acceleration scale). If this minimum G-value is not exceeded, regardless of the duration (or the Δv), the device will not activate.

Response curves are measured with a drop system filtering at 3kHz. Use of a different frequency filter will change the response curve.

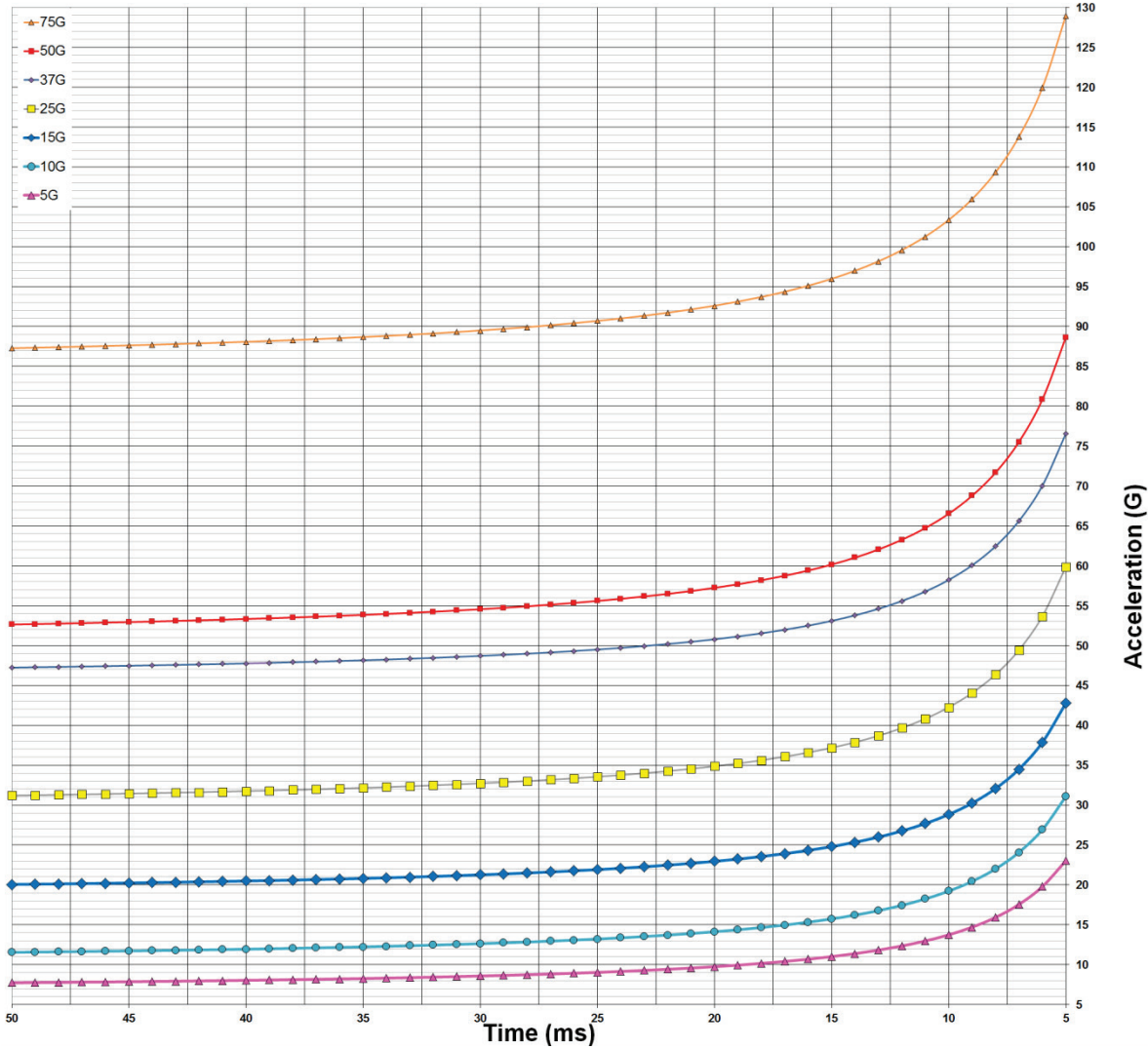
If you have any questions or are unsure of how to interpret ShockWatch products, please contact SpotSee or your local distributor for assistance.

**ShockWatch RFID G-Level vs. Duration (ms)
0.5 to 5ms**



Activation Occurs +/- 15% of the Nominal

**ShockWatch RFID G-Level vs Duration (ms)
5 to 50ms**



Activation Occurs +/- 15% of the Nominal Activation Value

RESPONSE EQUATIONS

The ShockWatch RFID's response generally follows the equations below:

PRODUCT	EQUATION
ShockWatch RFID – 5G	$G=(116/t^{1.22}) + 6.26$
ShockWatch RFID – 10G	$G=(145/t^{1.25}) + 9.37$
ShockWatch RFID – 15G	$G=(190/t^{1.25}) + 15.12$
ShockWatch RFID – 25G	$G=(245/t^{1.25}) + 23$
ShockWatch RFID – 37G	$G=(250/t)-1.3 + 45.7$
ShockWatch RFID – 50G	$G=(285/t)-1.25 + 50.5$
ShockWatch RFID – 75G	$G=(330/t)-1.25 + 84.8$

PRODUCT SELECTION

ShockWatch RFID should be used when monitoring products that are sensitive and must be handled with care. There are two things you need to know to select a ShockWatch RFID impact indicator sensitivity: shipment size and weight. The selection guide should always be used as a starting point only. The indicator that will be best suited to your application will also consider product fragility and packaging.

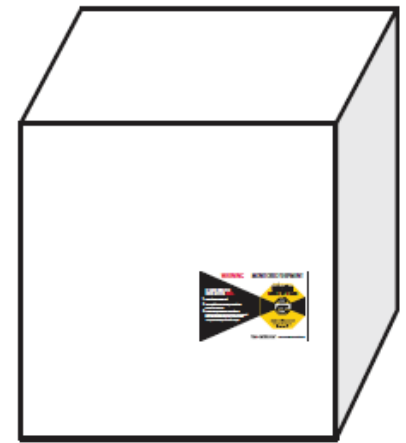
ShockWatch2	5 - 15 ft ³ .14 - .42 m ³	15 - 50 ft ³ .42 - 1.42 m ³	50 - 100 ft ³ 1.42 - 2.83 m ³	100 - 250 ft ³ 2.83 - 7.08 m ³	250 - 500 ft ³ 7.08 - 14.16 m ³	500 - 1,000 ft ³ 14.16 - 304.8 m ³	1,000+ ft ³ 304.8+ m ³
0 - 10 lbs 0 - 5 kg	75G	75G	50G	37G	N/A	N/A	N/A
10 - 25 lbs 5 - 11 kg	75G	50G	50G	37G	25G	N/A	N/A
25 - 50 lbs 11 - 23 kg	50G	50G	37G	25G	25G	15G	N/A
50 - 100 lbs 23 - 45 kg	50G	37G	37G	25G	15G	15G	10G
100 - 250 lbs 45 - 113 kg	37G	37G	25G	25G	15G	15G	10G
250 - 1,000 lbs 113 - 454 kg	37G	25G	25G	15G	15G	10G	10G
1,000 - 2,000 lbs 454 - 907 kg	25G	25G	25G	15G	15G	10G	5G
2,000 - 5,000 lbs 907 - 2,268 kg	25G	25G	15G	15G	10G	10G	5G
5,000 - 10,000 lbs 2,268 - 4,536 kg	25G	15G	15G	15G	10G	10G	5G
10,000 - 15,000 lbs 4,536 - 6,804 kg	N/A	15G	15G	10G	10G	5G	5G
15,000 - 20,000 lbs 6,804 - 9,072 kg	N/A	N/A	10G	10G	5G	5G	5G
20,000 - 30,000 lbs 9,072 - 13,608 kg	N/A	N/A	N/A	5G	5G	5G	5G
30,000+ lbs 13,608+ kg	N/A	N/A	N/A	N/A	5G	5G	5G

HOW TO USE THE SHOCKWATCH RFID

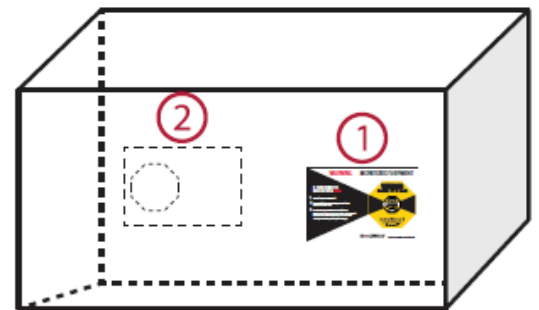
The ShockWatch RFID visually alerts users when a mishandling event has occurred so that appropriate actions can be taken according to the company or industry guidelines. The ShockWatch RFID will change from white to red when an impact over the G-level amplitude / duration has occurred. See mounting details in the section “Best Practices for Mounting” for instructions detailing how to place the ShockWatch RFID on a package.

MOUNTING BEST PRACTICES

Mount the ShockWatch RFID Impact Indicator in the lower third of the package/pallet as close to the edge as possible. Avoid the center of the package because the mounting locations should be structurally sound.



If the package is twice as long as it is wide, use two ShockWatch RFID Impact Indicators. Place a second indicator in the same position on the opposite side of the package.



While these instructions are considered best practices, each situation may be different. Contact ShockWatch if you have any questions.

ACCESSORIES & RELATED PRODUCTS

The ShockWatch RFID, framing labels, companion labels, alert stickers, and alert tape can be incorporated into an overall program for reducing product mishandling. Contact your ShockWatch for more information.

QUALITY

The sampling specification used in the manufacturing process of the ShockWatch RFID is ANSI Z1.4, AQL 2.5%. This specification is a recognised means of statistically sampling manufactured goods for acceptable product quality.

ShockWatch is an ISO 9001-2015 company, and as the global leader in supply chain damage prevention programs, ShockWatch's testing and inspection equipment is calibrated by an ISO/IEC accredited organisation, traceable to NIST standards.

ORDERING INFORMATION

Part Number	Description
SWRFID 5G	ShockWatch RFID – 5G
SWRFID 10G	ShockWatch RFID – 10G
SWRFID 15G	ShockWatch RFID – 15G
SWRFID 25G	ShockWatch RFID – 25G
SWRFID 37G	ShockWatch RFID – 37G
SWRFID 50G	ShockWatch RFID – 50G
SWRFID 75G	ShockWatch RFID – 75G
26106	Companion Label - 200/roll
26107	Companion Label - 500/roll

TECHNICAL SUPPORT

If you are unsure of how to use or interpret the ShockWatch® RFID, please contact ShockWatch by visiting shockwatch.com.au or call 1300 074 625.