

Spot Bot™

Cellular

PRODUCT MANUAL



CONTENTS

1. Introduction	3
2. Initial Setup	4
A. Account Activation	4
B. Adding or Editing Users	5
C. Login and Password Recovery	6
D. SpotBot Unit Activation	7
3. Configure your SpotBot	8
A. Firmware Updates	11
4. How to use your SpotBot	12
A. Begin Monitoring	12
B. Stop Monitoring	12
5. The SpotSee Platform	13
A. The Dashboard	13
B. Asset Page	15
C. Asset Page Settings	20
6. Managing Data recorded in your SpotBot	22
A. Access a PDF or CSV report in your SpotBot	22
B. Clear the Trip data	24
7. Contacts	24
8. Regulatory Compliance	25

1. INTRODUCTION

Every year more than \$12B in goods are lost and over \$100B are damaged during transport.

SpotBot is a reliable solution that allows you to keep track of your shipment and how it is being handled.

- Receive immediate alerts in case of mishandling with the impact level and location.
- Track your shipment with hourly location updates.
- Monitor your cargo environment with hourly temperature readings.

And, you can access all this information - wherever you are - through our web-based SpotSee Cloud.

SPOTBOT MAIN SPECIFICATIONS

Impact Monitoring: 3-axis detection

Impact Accuracy: Accurate up to 65G

Impact	Full Range Accuracy	Alarm Setting
10G to 4G	9%	4G
30G to 10G	7%	10G
65G to 30G	3%	30G

Duration of Impact: 10 to 18ms

Bandwidth: 100Hz

Operating Temperature Range:
-40°C to 85°C / -40°F to 185°F

Temperature Monitoring:
Internal temperature sensor

Temperature Accuracy:
±2°C (-25°C to 85°C)
±3°C (-40°C to -25°C)

Battery Life:

Battery Type: 1.5V AA Batteries (*Lithium cells required for long battery life or low temp operation*)

1 (summary / event) per day	Up to 190 Days	Normal cellular coverage (Lithium batteries)
1 (summary / event) per hour	Up to 75 Days	

Battery life assumes normal cellular coverage and lithium batteries installed

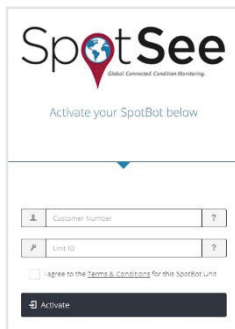
Communication: Global cellular network with no roaming charges. 3G, 2G networks

2. INITIAL SETUP

A. ACCOUNT ACTIVATION

ACTIVATE THE SPOTBOT

1. If this is the first connected device purchase for your company, you must establish an account admin. This person will be responsible for managing user access to the SpotSee Cloud.
2. Navigate to activate.spotsee.io to begin the activation process.



Enter the Customer Number found on the packing list that shipped with the SpotBot, the SpotSee invoice or order acknowledgement.

Enter the Unit ID found on the front label of the SpotBot.

Accept the Terms and Conditions.

Click Activate.

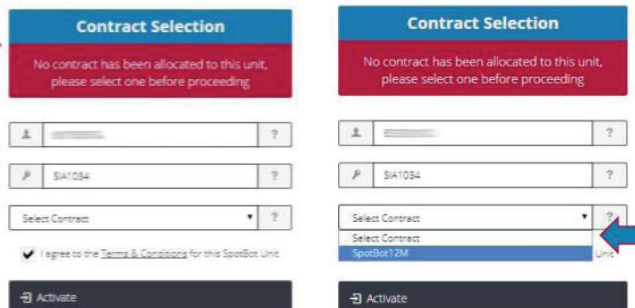
3. Enter the admin email address in the pop-up box and click Enter

An email will be sent to the Admin’s email address from no-reply@shockwatch.com.

Note: If the email is not received within 5 minutes, please check your spam or junk folders. If it has still not been received, please contact SpotSee technical support.

4. Follow the link in the email to create your password.

Note: Steps 3 and 4 will only be necessary the first time an account is set up on the SpotSee Cloud.



5. A message will prompt you to select an available contract for the unit. Click the dropdown list to select a contract. Click Activate.



6. Your SpotBot unit has now been activated.

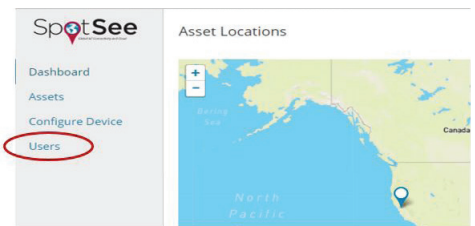
B. ADDING OR EDITING USERS

1. Navigate to cloud.spotsee.io and log in using the ADMIN email address and password created in STEP 1

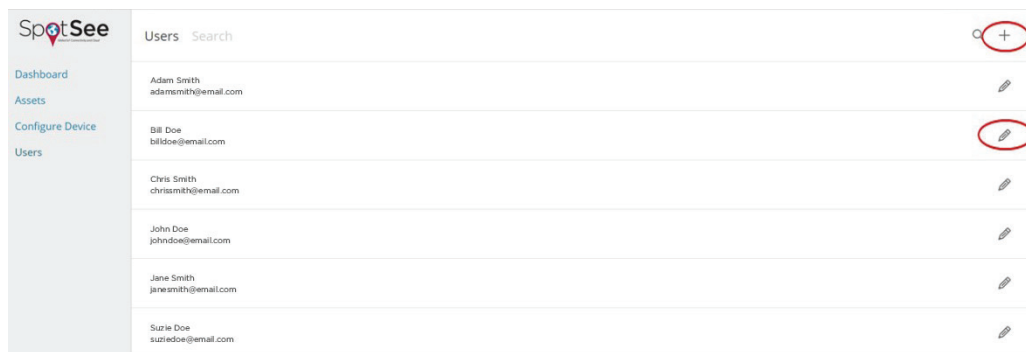


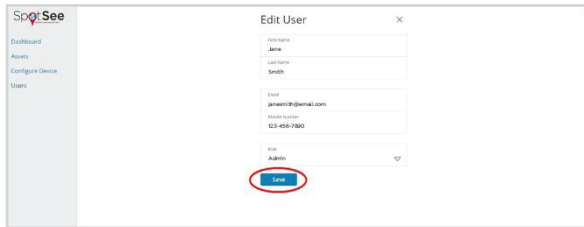
The admin will be able to view and manage other users and assets inside your company.

Clicking *Users* on the left side of the screen displays a list of all the existing users for your account.



You can edit a user by clicking on the *pencil icon* or add a user by clicking the *plus (+) sign*.



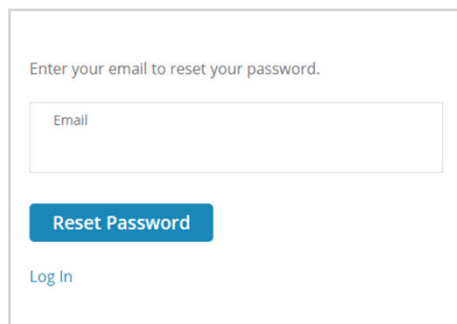


Once you are finished making changes to an existing user, be sure to click the **Save** button.

Once you are finished inputting all the fields for a new user, click the **Add** button

C. LOGIN AND PASSWORD RECOVERY

Go to cloud.spotsee.io and enter your email and password.



If you forgot your password, click **Forgot Password** to receive a password reset email.

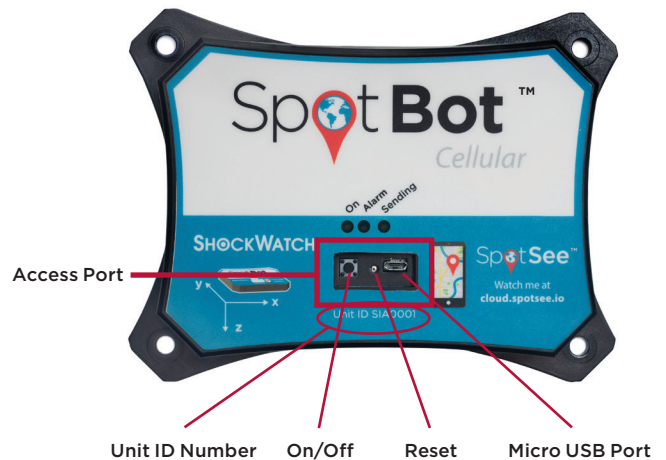
Enter your email and click **Reset Password**.

Follow the link provided in the email to reset your password. If you can't find the email, please check in the spam or clutter folders.



D. SPOTBOT UNIT ACTIVATION

1. To activate your new SpotBot unit so that it will be visible in the SpotSee Cloud, navigate to the activation website: activate.spotsee.io
2. Enter “Customer Number” and “Unit ID” and click “Activate”
Message will appear stating that service has been activated for the Unit ID that was entered.



BATTERY INSTALLATION

1. Remove SpotBot unit and batteries from the box
2. Unscrew battery panel (see image to the right)
🔑 *Required to complete this step*
3. Install the six (6) AA batteries provided in the direction notated within each battery slot and replace battery panel making sure that CE sticker is visible

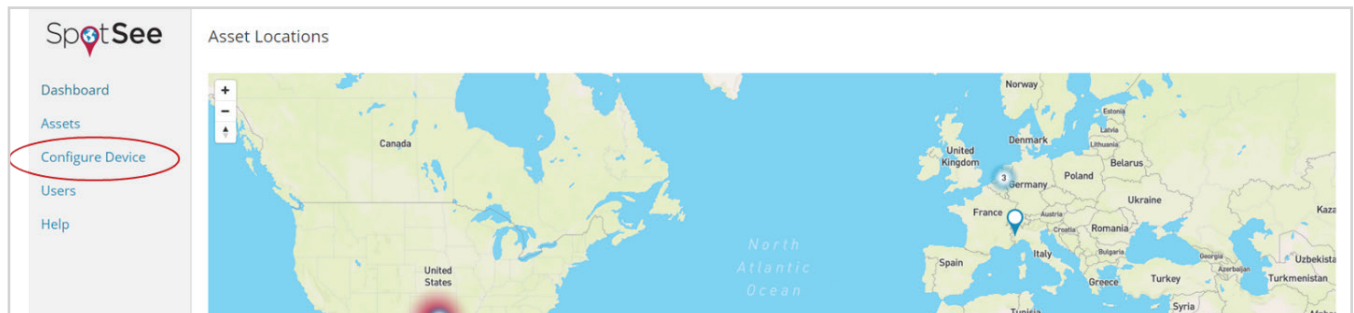


BATTERY REPLACEMENT

- When replacing the batteries make sure you have all you need on hand. The SpotBot will keep settings for five (5) minutes without power so you can replace batteries.
- If the device goes longer than five (5) minutes without batteries, or if the SpotBot’s batteries become depleted during a trip, you must repeat *Step 3. Configure your SpotBot.*

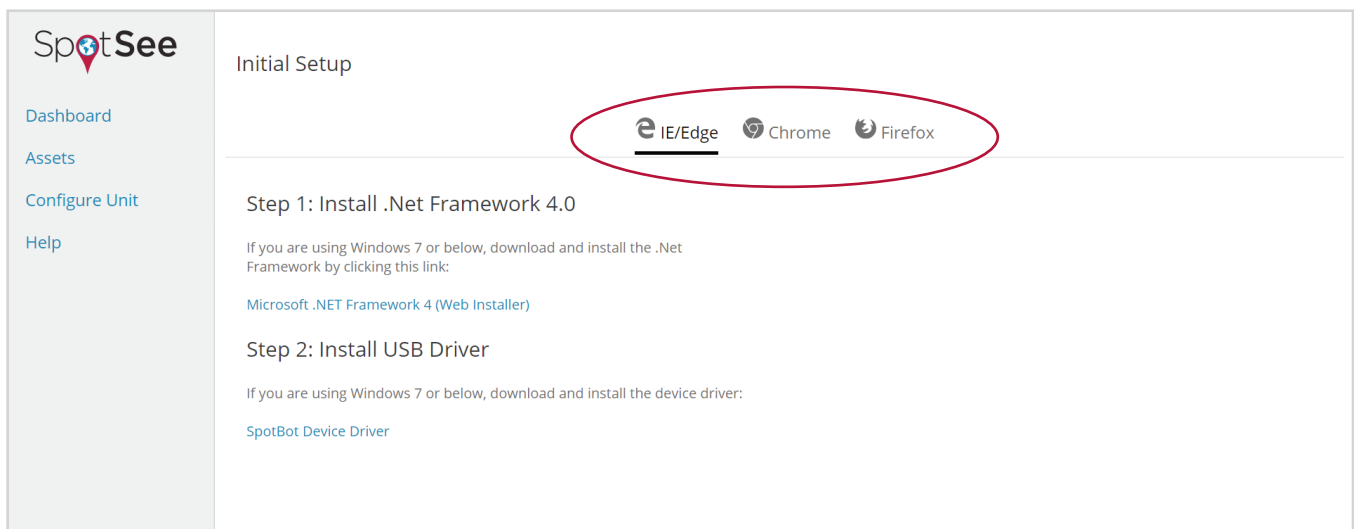
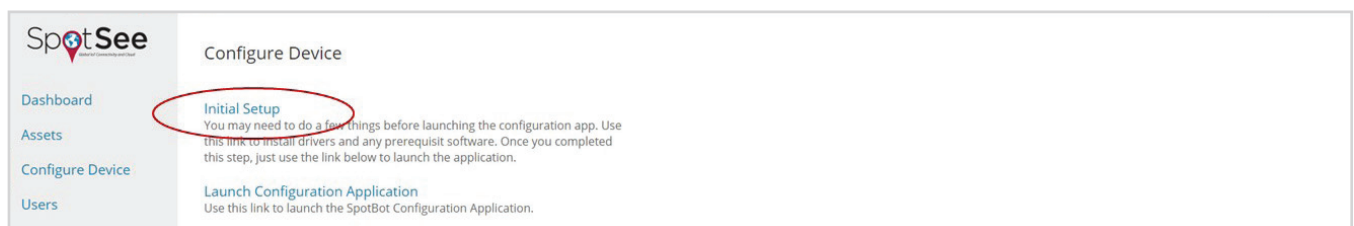
3. CONFIGURE YOUR SPOTBOT

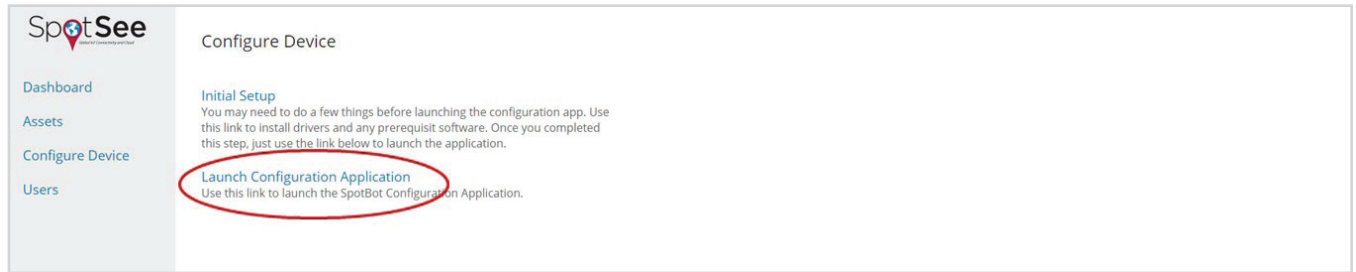
1. Navigate to cloud.spotsee.io and log in using your email and password
2. Click on *Configure Unit* in the column on the left side of the web page



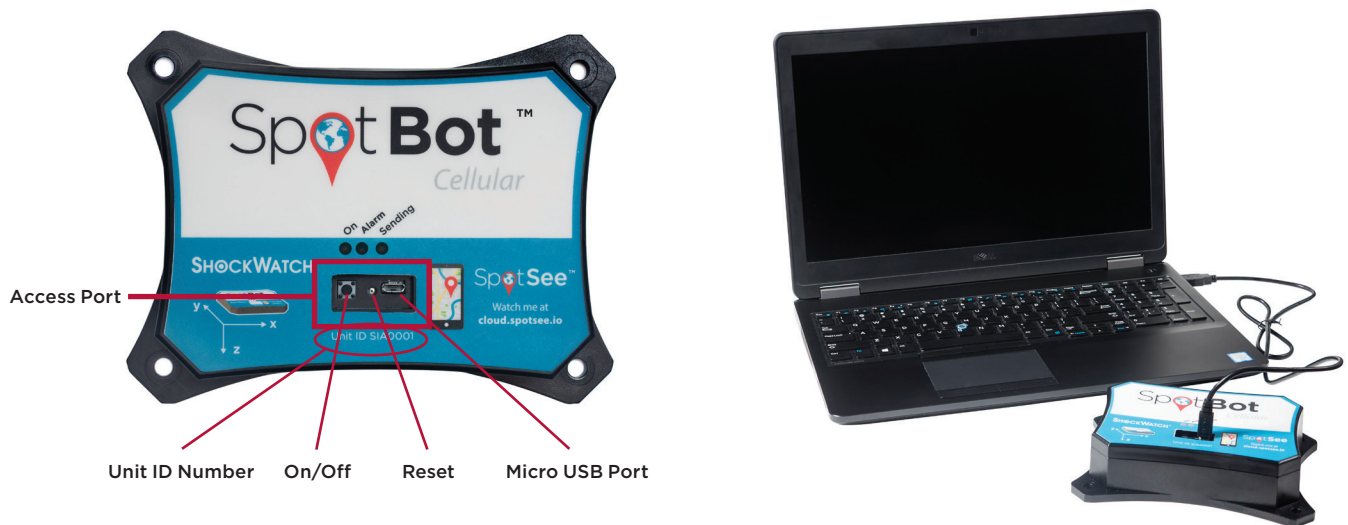
3. Go to “Initial Setup” and follow the steps for your chosen browser. Click *Launch Configuration Application* to launch and run the SpotBot Software.

Please Note: SpotBot Beta test customers must first delete existing SpotBot configuration application before completing this step.





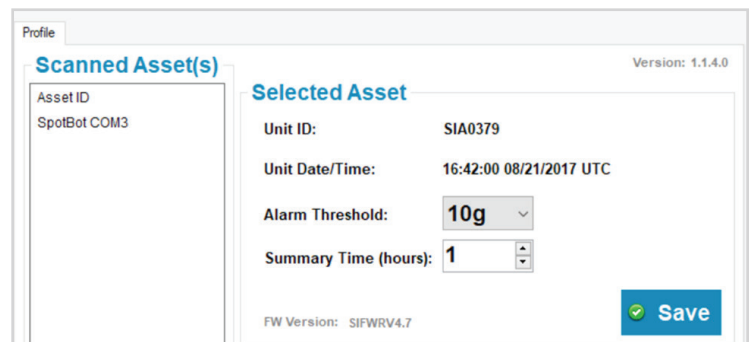
4. Remove the rubber cover from the front of your SpotBot unit
5. Connect your computer to the SpotBot using the micro-USB cable provided



6. Push the *On/Off* button on the front of the SpotBot unit

Unit ID will appear within the profile pop-up window (shown below)

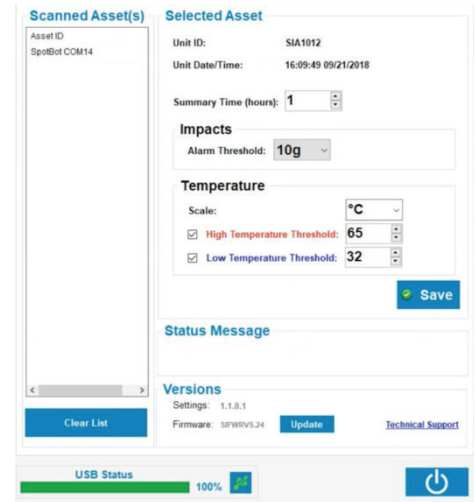
7. Select the impact threshold (minimum impact for which the SpotBot will send alerts)
8. Select the summary time (frequency in which the SpotBot will communicate its location and alarm count)



9. If temperature alarms are desired, enable the ascending and/or descending temperature alarms by checking the box next to them. Select the temperature thresholds for which the SpotBot will send alerts.

Notifications for temperature will be sent when the device records temperatures above/below the user defined thresholds.

Note: A notification will be sent when the device records that the temperature has returned to within the acceptable temperature range. For this second notification to be sent, the temperature must be two degrees below the high temperature threshold or two degrees above the low temperature threshold.



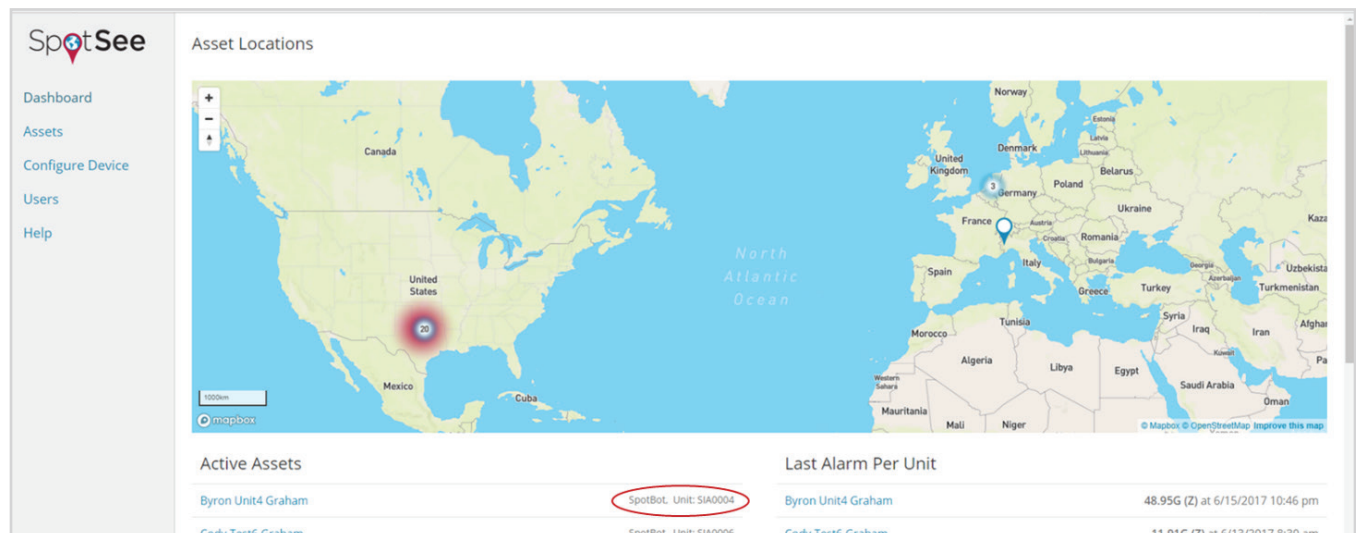
10. Click Save

There is a tradeoff between the battery life and the summary time. If you need longer battery life, the summary time should be set to higher values. Please refer to the SpotBot main specifications for an indication of expected battery life. (Page 3)

After you press Save, the SpotBot will send a summary message with the new settings to the SpotSee Cloud via the cellular network.

Before you start a trip, verify you can see your SpotBot in the SpotSee Platform.

Login to your account at cloud.spotsee.io and you will be able to identify your SpotBot within the dashboard.



Finally, unplug the Micro-USB cable and replace the rubber cover. Your SpotBot is ready to start a trip.

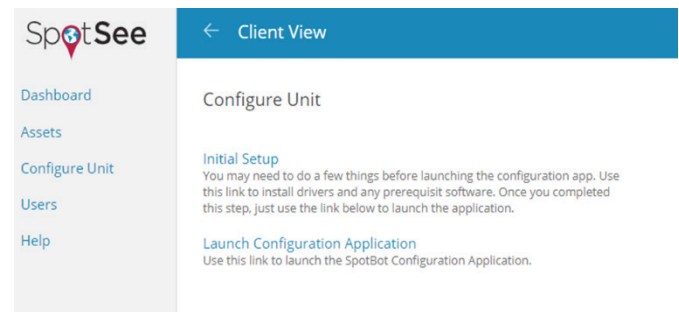
A. FIRMWARE UPDATES

Beginning with firmware revision 5.2.2, SpotBot firmware can be updated via the ClickOnce application on the SpotSee Cloud. This feature ensure that users can benefit from the latest tools and firmware fixes.

To upgrade your firmware:

Login to your account at cloud.spotsee.io and select Configure Unit.

Select Launch Configuration Application. See Configure Your SpotBot unit if this is the first time you have connected to the device.



Plug in the SpotBot unit via the micro-USB cable.

Turn the SpotBot unit on

Click *Update*

Caution: Do not disconnect the unit from the PC during the update process as this can result in an unstable firmware installation.

4. HOW TO USE YOUR SPOTBOT

A. BEGIN MONITORING

Begin Monitoring - Press *On/Off* button in the access port. The “On” and “Sending” lights will both flash green.

In Use (No Alarm) - When the SpotBot is in use and not in process of sending an alarm to the SpotSee Cloud, the “On” light will flash green every minute if no alarm has occurred. This light will flash yellow if the unit has low battery life.



Alarm Triggered - When SpotBot experiences an impact above the “Alarm Threshold,” the “Alarm” (red) as well as the “On” and “Sending” (green) lights will flash at different intervals. The lights continue to flash as the SpotBot unit sends the alarm data to the SpotSee Cloud.

TIP

A good way to verify if the trip is active is to produce an alarm. Place a notepad on your desk and drop the SpotBot from 3 inches (8cm) onto the notepad. You will see all three (3) LEDs flash if the trip is started and no LEDs if the trip is not started.

Unit Status Check - To check the status of the SpotBot unit, press the *On/Off* button for one (1) second. If the “On” light flashes green and the “Alarm” light flashes red, an alarm has occurred. If the “Alarm” light does not flash, then no alarm has occurred.

B. STOP MONITORING

Stop Monitoring - Press and hold the *On/Off* button (for approximately five (5) seconds) until all three (3) lights stop flashing and remain on.



The reason you need to hold the button to stop the trip is to prevent people from stopping the trip while in transit with a simple push of the button. This way stopping the trip is a deliberate action. As long as there is cellular coverage, a notice will be sent to the SpotSee user if the trip has been stopped or the device has been reset, so you know immediately if someone has tampered with the device.

5. SPOTSEE PLATFORM

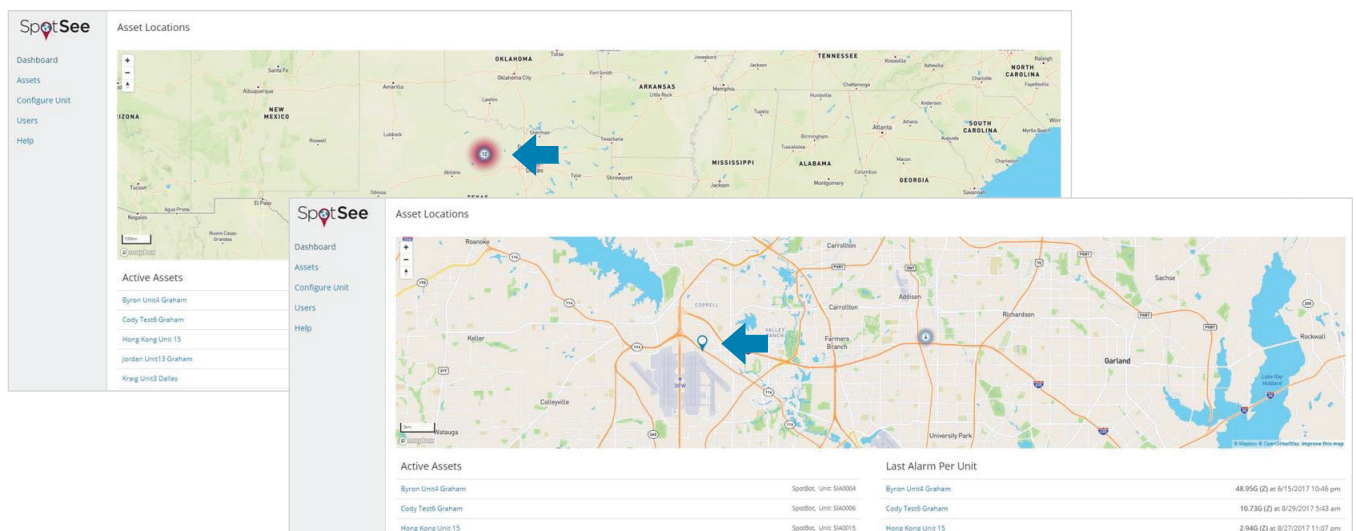
A. THE DASHBOARD

The SpotSee Cloud enables you to monitor and control your assets from any location. Upon logging into the cloud platform you will see your dashboard. This page will show the last known location of all your SpotBot units (referred to as assets), a list of all your active assets and the most recent alarm for each one.



If active assets or units are positioned in the same location, it will show the number of units in that location.

By clicking on the units in a specific area, the map will zoom in until you can see individual units.





You can access each individual SpotBot by clicking on the *location icon* or on the *asset name* in any of the lists.

It is possible to export the data recorded in the SpotSee Cloud for multiple devices through the Consolidated Report feature.

Select the devices of interest from the list and click Select

Consolidated Report

Start Date	6/28/2018 9:59 am	
End Date	7/5/2018 9:59 am	

- SIA0335
- SIA0888

The consolidated report will be downloaded and analyzed in Excel.

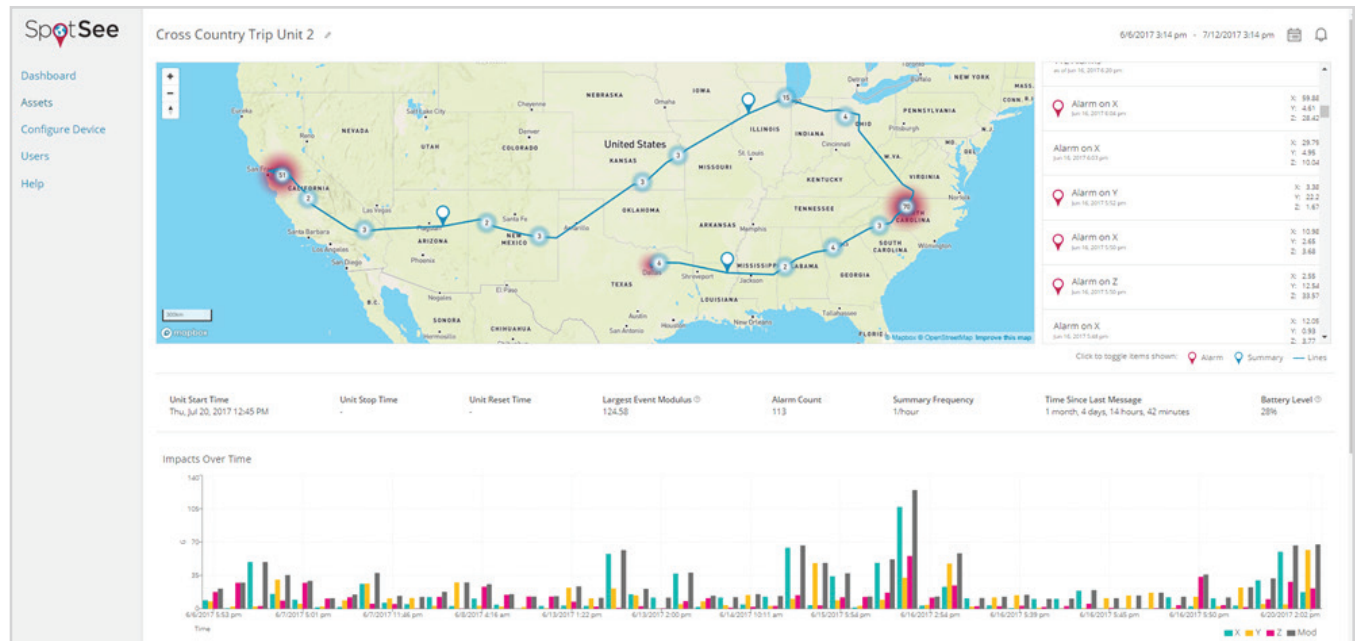
date	unitId	name	accelX	accelY	accelZ	loc	bat	alarm	Axis	msgType	temp	tilt	roll	humidity	pressure	dewpoint	alarmCoi	maxAccel	maxAccel	maxAccel	gLevel	limi	summary	Freq
2018-09-2	SIA0888	SIA0888				32.929882	90			summary	21							2					5	1
2018-09-2	SIA0888	SIA0888				32.929882	90			summary	22							2					5	1
2018-09-2	SIA0888	SIA0888	7.742	5.39	0.392	32.929882	90	1		alarm	22													
2018-09-2	SIA0888	SIA0888				32.929882	90			summary	25												5	1
2018-09-2	SIA0888	SIA0888				32.929882	90			summary	25												5	1
2018-09-2	SIA0888	SIA0888				32.929882	90			summary	25												5	1
2018-09-2	SIA0888	SIA0888				32.929882	90			summary	28												5	1
2018-09-2	SIA0888	SIA0888				32.929882	90			summary	27												5	1
2018-09-2	SIA0888	SIA0888				32.929882	90			summary	27												5	1
2018-09-2	SIA0888	SIA0888				32.926205	90			summary	26												5	1
2018-09-2	SIA0888	SIA0888				32.926205	90			summary	28												5	1
2018-09-2	SIA0335	SIA0335				32.929882	100			summary	26												10	1
2018-09-2	SIA0335	SIA0335	1.029	1.029	1.029	32.929882	100	99		alarm	26													
2018-09-2	SIA0335	SIA0335				32.929882	100			summary	24												10	1
2018-09-2	SIA0335	SIA0335	1.029	1.029	1.029	32.929882	100	99		alarm	29													
2018-09-2	SIA0335	SIA0335	1.029	1.029	1.029	32.929882	100	99		alarm	26													
2018-09-2	SIA0335	SIA0335	6.272	4.263	17.542	32.929882	100	4		alarm	26													
2018-09-2	SIA0335	SIA0335	5.047	0.245	19.6	32.929882	100	4		alarm	26													
2018-09-2	SIA0335	SIA0335	11.515	2.793	10.976	32.929882	100	1		alarm	26													
2018-09-2	SIA0335	SIA0335	14.7	12.887	45.276	32.929882	100	4		alarm	26													

B. ASSET PAGE

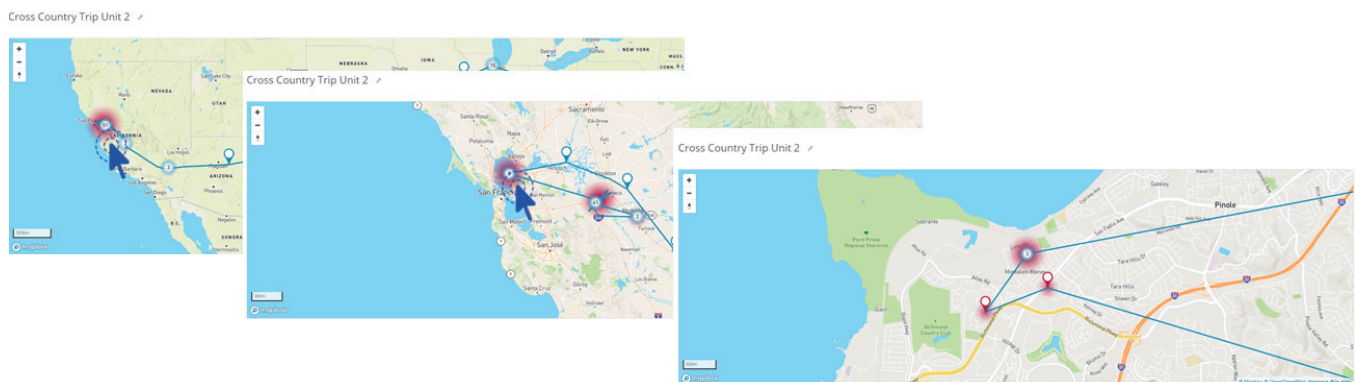
When you drill down into an individual SpotBot page, you will be able to access more detailed information about the specific SpotBot.

THE MAP

On the map you will see all the locations your SpotBot reported to the SpotSee Platform.



The map will show the location pin (alarms and summaries) clustered by proximity. By clicking the numbers on the map, the map will zoom in until you can see individual pins.



The red heat map around the numbers indicates there is at least one alarm within that cluster. The heat map grows with the number of alarms in that location or area.

A blue pin represents a summary (with location and count of all alarms registered by the unit since the last data reset).

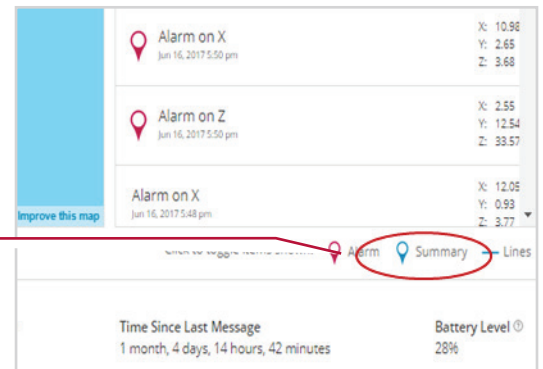
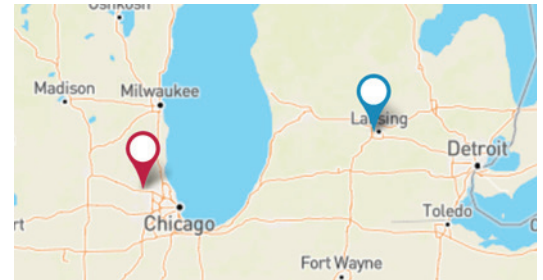
A red pin represents an alarm issued by the SpotBot. The SpotBot will issue an alarm if the impact is higher than the alarm threshold as defined in Section 3 - Configure your SpotBot.

On the right side of the map is a list of alarms and summaries for the unit. The alarm shows the main axis and the x, y, and z values recorded.

If you prefer to see only the alarms, click on the **Summary** label.

The summaries will be removed from the map and the list and only the alarms will show.

When summaries are turned off the icon at the bottom changes from blue to gray.



Summary Statistics:

- Unit Start Time: Thu Jul 20, 2017 12:45 PM
- Unit Stop Time: -
- Unit Reset Time: -
- Largest Event: Modulus 124.58
- Alarm Count: NaN
- Summary Frequency: 1/hour
- Time Since Last Message: 1 month, 5 days, 13 hours, 16 minutes
- Battery Level: 28%

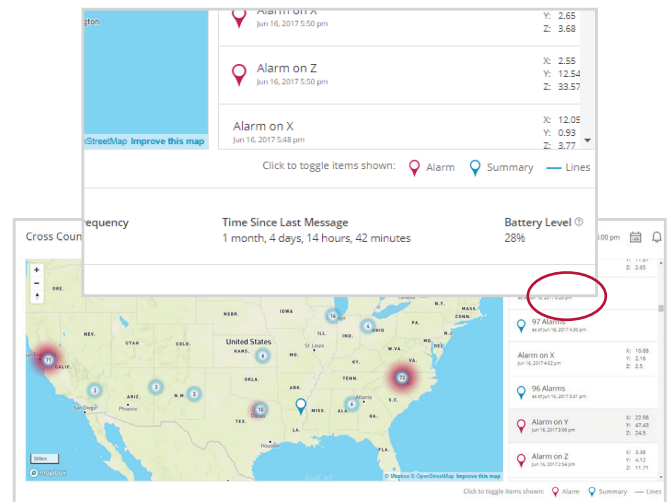
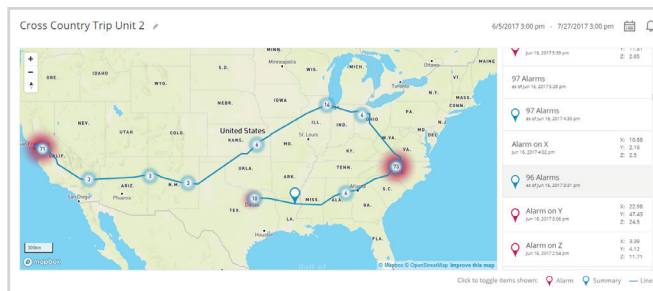
Impacts Over Time:

The bar chart shows impact levels over time from 6/6/2017 5:53 pm to 6/20/2017 2:02 pm. The legend indicates: X (blue), Y (red), Z (green), and Mod (black).

You can do the same with the alarm label if you wish to only see summaries.

The SpotSee platform will trace the trip path by default when you open the unit page. If you do not wish to see the path, you can remove it by clicking the lines icon.

The map will then show all the location points without the path.



INFORMATION TAB

Below the map is a table with relevant current information about the unit.

Unit Start Time Thu, Jul 13, 2017 4:55 PM	Unit Stop Time -	Unit Reset Time Fri, Jun 30, 2017 3:20 PM	Largest Event Modulus ⓘ 50.9	Alarm Count 4	Summary Frequency 24/hour	Time Since Last Message 1 hour, 8 minutes	Battery Level ⓘ 87%
--	---------------------	--	---------------------------------	------------------	------------------------------	--	------------------------

Unit Start Time - indicates last time a trip was started in a unit (as described in 4.A.).

Unit Stop Time - indicates the last time a unit was stopped (as described in 4.B.)

Unit Reset Time - indicates last time the unit's data was reset (see more in Step 6.B.)

Largest Event Modulus - largest impact received by the SpotSee platform since the unit was reset.* *NOTE: Modulus takes the x, y, and z directional impacts into consideration and summarizes the combined result of all three axes. It is calculated as $\sqrt{x^2 + y^2 + z^2}$*

Alarm Count - number of alarms recorded by the unit since it was reset.

Summary Frequency - the frequency in which the unit will send a summary

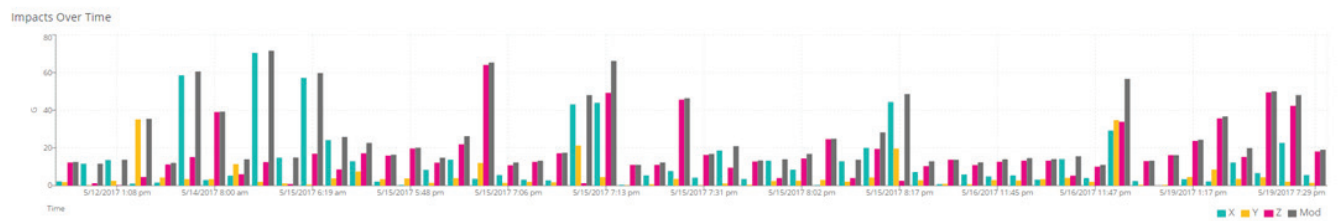
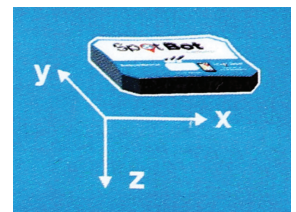
Time Since Last Message – this field indicates the last time a message was received from the SpotBot. In case this value is larger than the summary frequency, this field works as warning of lack of cellular coverage or mishandling of the SpotBot.

Battery Level – indicates the battery level of your unit. When this level reaches lower percentages, it is advised to change batteries before sending the unit on a trip.

To guarantee data integrity, the SpotBot has a battery preservation feature. The SpotBot will turn off the radio when the unit reaches 25% battery life but will still record the events in the unit. At 15% battery, the unit will stop recording, but the data will remain stored in the unit until the battery is completely depleted.

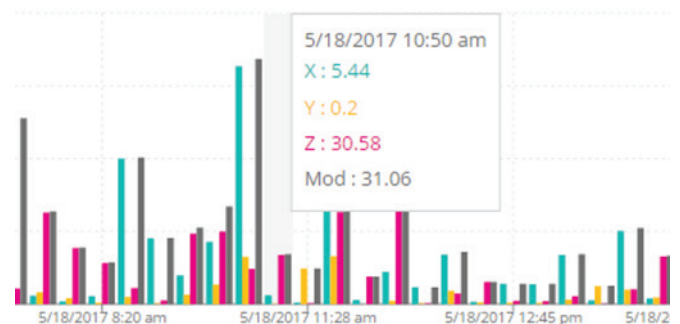
IMPACTS OVER TIME

Below the information tab you can find a graph of impacts over time with X,Y,Z and Modulus, representing the impact levels of all the alarms detected by the SpotBot. X,Y and Z axes directions can be found in the front label of the unit:



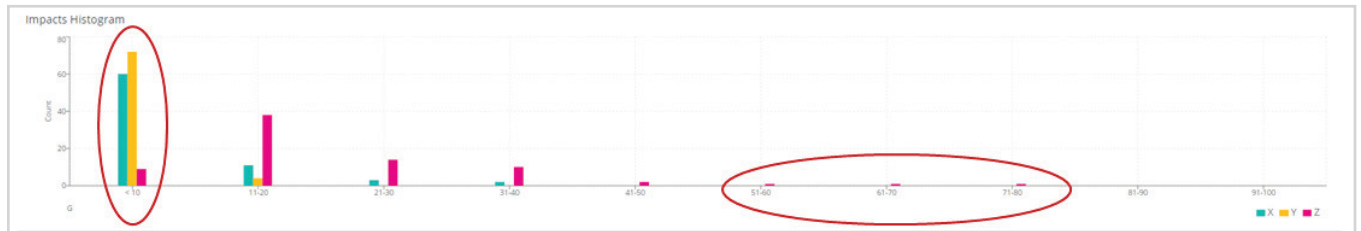
Hovering the cursor over the bars in the chart will allow you to see the individual values for each impact.

This is true for all the graphs represented on the SpotSee platform.



IMPACT HISTOGRAM

Below the “Impacts Over Time” graph, you will find the “Impact Histogram.” This chart tells you how many impacts you had over a certain impact level. This graph divides the impact values into intervals called bins. Each bar on the histogram represents the number of measurements falling within a bin.



In this example, most impacts fall within the <10 G bin. We can also see the unit had one impact in each of the higher G ranges.

TEMPERATURE

Temperature is also recorded by the SpotBot.



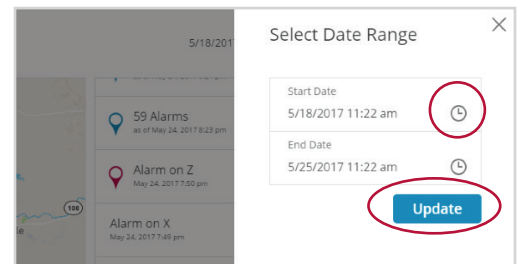
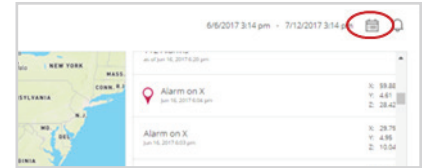
C. ASSET PAGE SETTINGS

CHANGE DATE RANGE

By selecting the calendar icon positioned on the top right of the page you can select to view data for a different date range.

The default date range is the last seven (7) days.

Select the desired start and end dates and then click *Update*. New data may take a few moments to load.



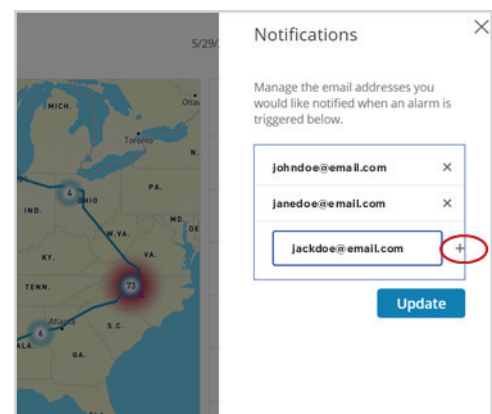
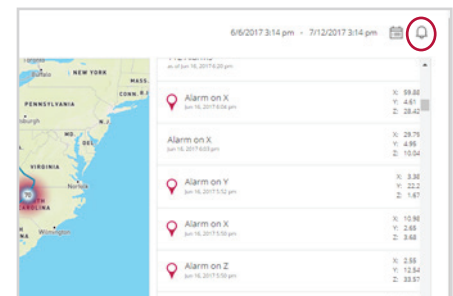
SET NOTIFICATION EMAILS

SpotSee Cloud allows you to define multiple emails to receive alarm notifications.

Click on the *notification icon* to set-up emails.🔔

Enter the new email address and click the *plus (+)* sign to add it to the list. Once you are done adding email addresses, click *Update* to save the list.

The emails you choose to receive notifications will receive an email every time the SpotSee platform receives an alarm from that specific SpotBot. Please make sure to check the spam and clutter folders and add no-reply@shockwatch.com to your address book to avoid the spam and clutter folders.



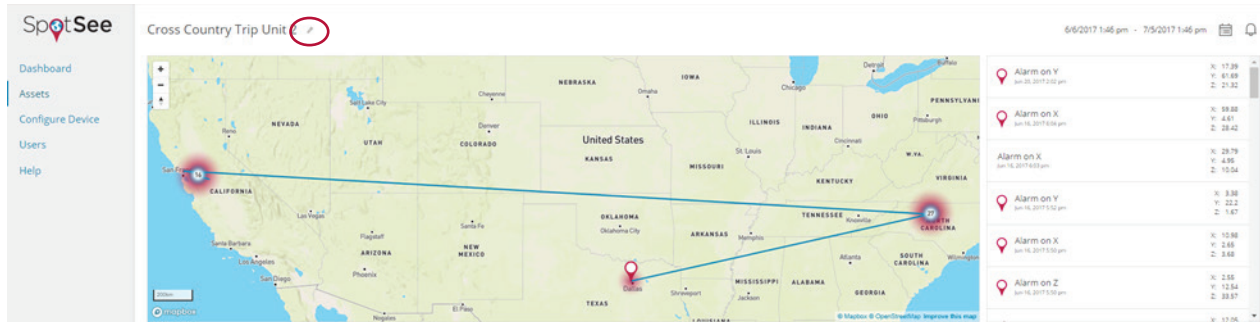
no-reply@shockwatch.com
[SpotSee] Unit10 Dallas Alarm

An alarm occurred on asset Unit10 Dallas

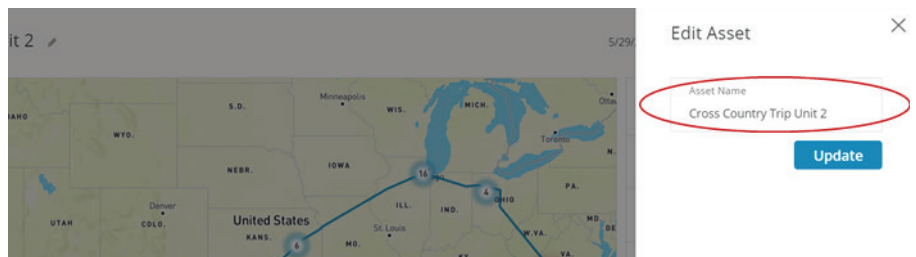
A 41.94G G force was detected on axes Z

CHANGE ASSET NAME

While on the “Assets” page, you can edit the Asset’s Name by clicking the pencil icon next to the unit name.



Enter the chosen name and click *Update*.



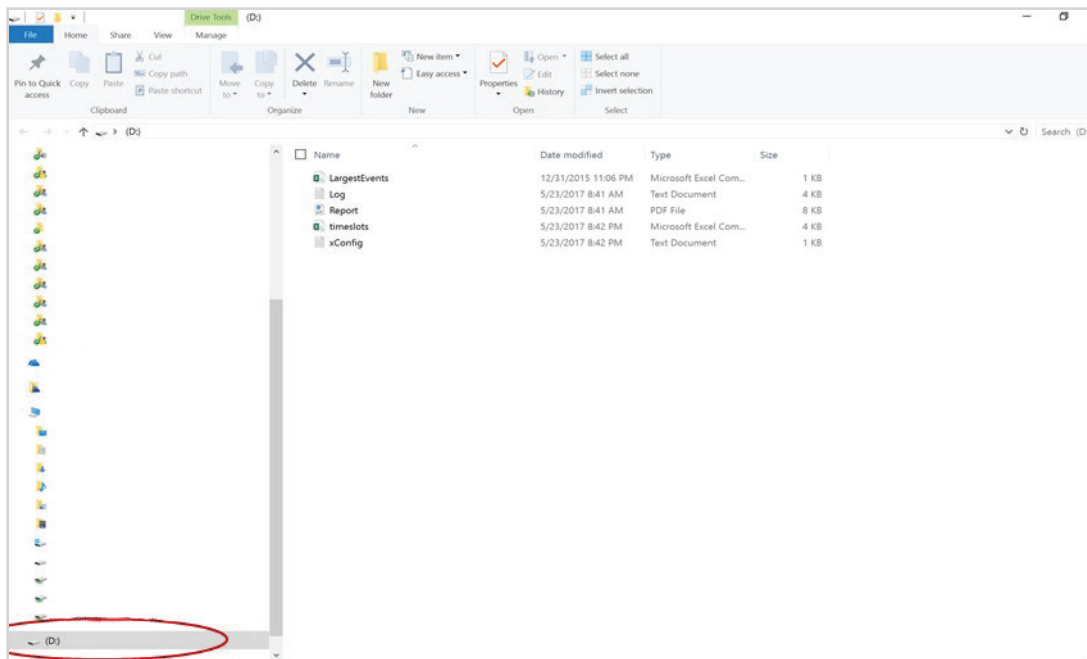
6. MANAGING DATA RECORDED IN YOUR SPOTBOT

A. ACCESS A PDF OR CSV REPORT IN YOUR SPOTBOT

In addition to viewing data on the SpotSee Cloud, you can download a PDF report of the trip directly from the device using the USB port. This report is saved on the unit in case cellular transmission is poor or there is no network when an impact occurs. This way, you never miss an event.

To retrieve this report, simply plug the SpotBot into the computer with the USB cable provided.

A drive will open on your computer (if the drive doesn't open automatically, press *On/Off Button*).



Open the new drive and copy the PDF file called “Report” to your computer. The events are also available in the Excel or CSV file, “Largest Events.”

Name	Date modified	Type	Size
LargestEvents	4/19/2017 2:12 AM	Microsoft Excel Com...	1 KB
Log	4/19/2017 2:11 AM	Text Document	1 KB
Report	4/19/2017 2:12 AM	Adobe Acrobat Docu...	6 KB
timeslots	4/19/2017 2:12 AM	Microsoft Excel Com...	1 KB
xConfig	4/19/2017 2:12 AM	Text Document	1 KB

The PDF report will summarize the entire trip, including a list of the ten (10) highest events recorded as well as a histogram of all the alerts recorded by the SpotBot, even if cellular transmission was not available or was limited during any part of the journey. In the report, you will notice that events above the alarm threshold are shown in red.

The file LargestEvents.xls will have the fifty (50) largest recorded impacts. This file can also be a good source of information.

The remaining files are system files and have no trip related information.

We recommend downloading the PDF report from the device directly after each trip. If damage occurs to your asset during the trip but there is no alert showing in the SpotSee Cloud, the device may have recorded an impact that it was unable to send due to limited cellular reception (i.e. on a ship or in a rural area).

SpotBot By ShockWatch

Trip Report
Unit ID: SIA0002

Trip start: 05/23/2017 08:15:51 UTC
Trip end: 05/23/2017 08:41:44 UTC
Trip duration: 25 minutes, 53 seconds
Alarm Threshold: 10 G

Trip Summary:
 First alarm detected at 05/22/2017 08:04:02 UTC, event modulus 24.552G
 Largest event detected at 05/22/2017 09:58:24 UTC, event modulus 76.292G
 Number of alarms detected: 31
 Number of summary messages sent: 177
 Remaining battery capacity: 92%

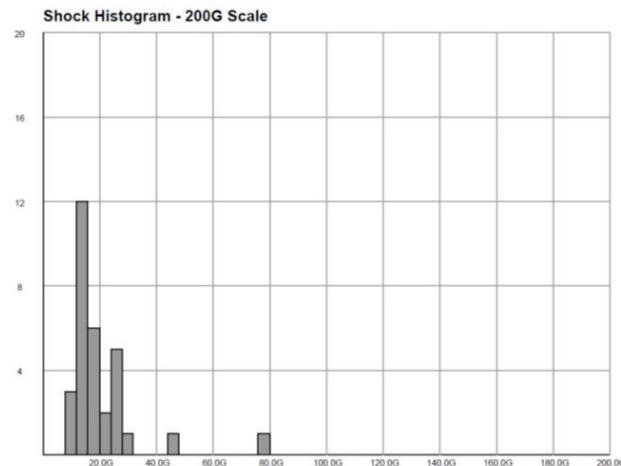
Largest 10 Events

N	Date/Time (UTC)	X	Y	Z	Modulus*
1	05/22/2017 09:58:24	-54.929G	+52.920G	-1.666G	76.292G
2	05/22/2017 10:38:04	+44.541G	+1.617G	+10.682G	45.833G
3	05/22/2017 08:04:09	+2.842G	+0.539G	+29.841G	29.981G
4	05/23/2017 02:11:04	+2.205G	+1.470G	+26.313G	26.446G
5	05/22/2017 10:07:11	+25.627G	+0.980G	-4.802G	26.091G
6	05/23/2017 03:33:30	+2.107G	+5.635G	+25.284G	25.990G
7	05/22/2017 10:40:27	+3.283G	-10.045G	-21.903G	24.319G
8	05/22/2017 08:04:02	-0.147G	-11.564G	+21.658G	24.552G
9	05/22/2017 10:03:48	-0.588G	-2.940G	-17.444G	17.700G
10	05/23/2017 08:17:26	+0.735G	-0.392G	+16.709G	16.730G

SpotBot By ShockWatch

Trip Report
Unit ID: SIA0002

Shock Histogram - 200G Scale



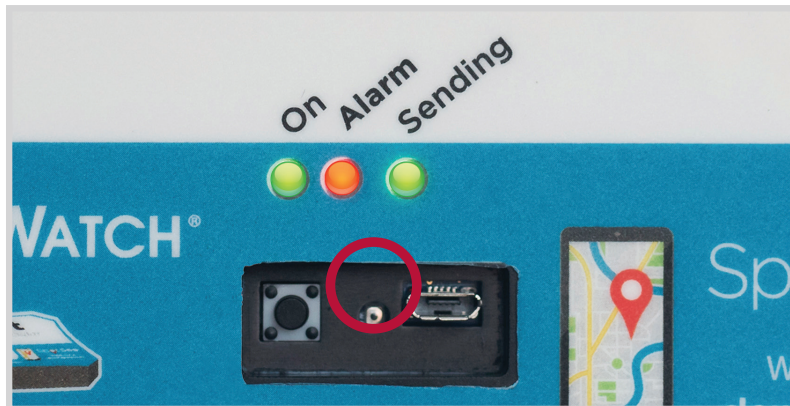
Modulus is the combined result from the impact in X, Y and Z direction.

Created: 05/23/2017 08:41:44
Page 1

Created: 05/23/2017 08:41:44
Page 2

B. CLEAR THE TRIP DATA

Once you have downloaded the PDF report and before starting a new trip, you can clear the SpotBot data by pressing the *Reset Button* (recessed button). You may need a pen or pencil to press this button. It is designed to be recessed so the button is not pressed by accident during transit.



This action will clear all the data on the device and in the report tables, allowing you to start a new monitoring.

NOTE: All transmitted data from the trip will still be stored in the SpotSee platform.

7. CONTACTS

TECHNICAL SUPPORT

Email: techsupport@shockwatch.com

ShockWatch Canada & Americas

US: +1 800-466-0101

Outside US: +1 214-736-4579

ShockWatch Europe, Middle East, Africa:

+31.55.7370 148

ShockWatch Asia-Pacific:

+86 138-1884-4157

CUSTOMER SUPPORT

Email: orders@shockwatch.com

ShockWatch Canada & Americas

US: +1 800-419-1454

Outside US: +1 214-736-4578

ShockWatch Europe, Middle East, Africa:

+31.55.7370 246

ShockWatch Asia-Pacific:

+86 21-6034 7267

8. REGULATORY COMPLIANCE

Federal Communication Commission Interference Statement

This equipment has been tested and found to comply with the limits for a Class B digital device, pursuant to part 15 of the FCC Rules. These limits are designed to provide reasonable protection against harmful interference in a residential installation. This equipment generates, uses and can radiate radio frequency energy and, if not installed and used in accordance with the instructions, may cause harmful interference to radio communications. However, there is no guarantee that interference will not occur in a particular installation. If this equipment does cause harmful interference to radio or television reception, which can be determined by turning the equipment off and on, the user is encouraged to try to correct the interference by one or more of the following measures:

- Reorient or relocate the receiving antenna.
- Increase the separation between the equipment and receiver.
- Connect the equipment into an outlet on a circuit different from that to which the receiver is connected.
- Consult the dealer or an experienced radio/TV technician for help.

U.S./Canada Regulatory Compliance Information

To satisfy FCC RF exposure requirements for mobile and base station transmission devices, a separation distance of 20 cm or more should be maintained between the antenna of this device and persons during operation. To ensure compliance, operation at closer than this distance is not recommended. The antenna(s) used for this transmitter must not be co-located or operating in conjunction with any other antenna or transmitter.

Industry Canada Statements

This device complies with Industry Canada license-exempt RSS standard(s). Operation is subject to the following two conditions: (1) this device may not cause interference, and (2) this device must accept any interference, including interference that may cause undesired operation of the device.

To reduce potential radio interference to other users, the antenna type and its gain should be so chosen that the equivalent isotropically radiated power (e.i.r.p.) is not more than that permitted for successful communication.