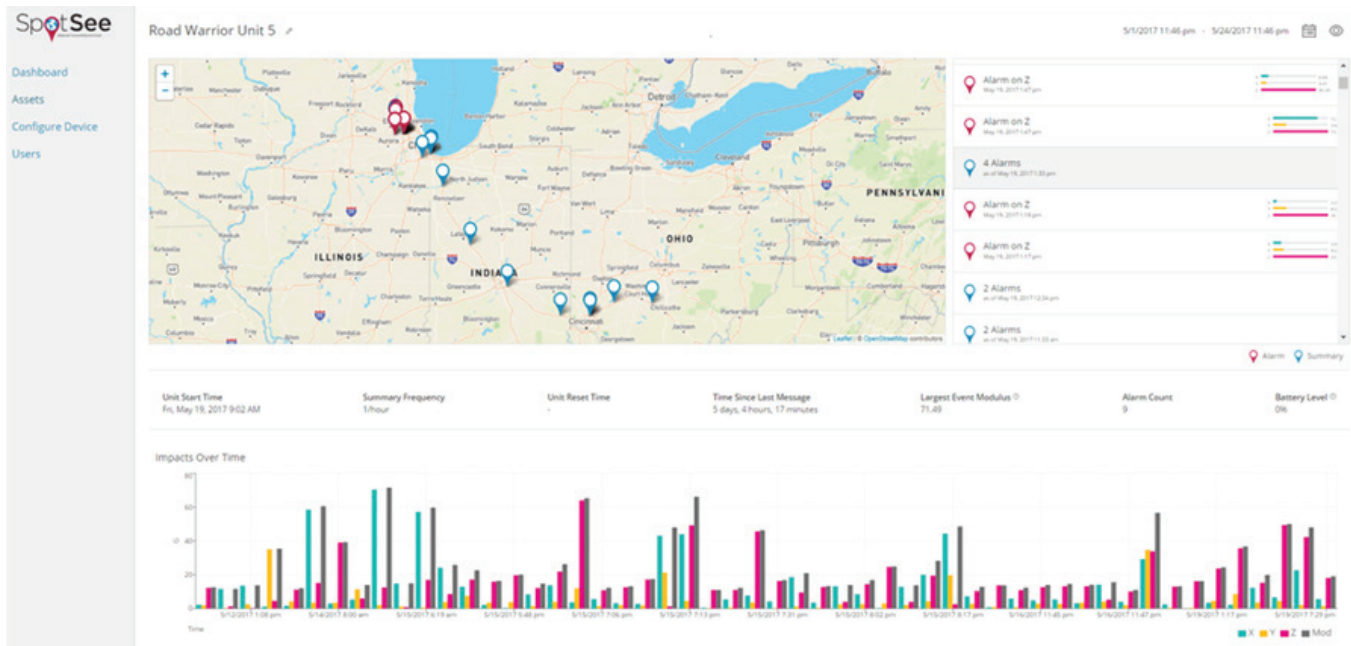




FUNCTIONAL

- Impact detection with real time alerts above user defined thresholds
- Alerts via cellular communication with impact data stamp, location and temperature
- Location information and event summaries communicated from 1h to 24 hour intervals (user defined)
- Worldwide coverage via dedicated network (using Tier 1 local radio networks)
- Secure cloud platform with global accessibility



- Dashboard with unit's last location and dedicated impact and temperature information
- User management and notification controls
- Power save mode in low connectivity/low battery situations to extend battery life

GENERAL SPECIFICATIONS

- USB 2.0 connector
- Dimensions: W*L*H = 7.000" x 5.250" x 1.375"
= 17.78 x 13.335 x 3.5 cm
- Weight: 1.304 lbs = 590 gr with batteries
1.104 lbs = 500 gr without batteries



POWER SPECIFICATIONS

Operating voltage: 9V internal battery pack

Batteries: 6 x 1.5V Lithium AA Batteries (will work with 1.5 Alkaline AA Batteries)

**Battery life in normal cellular coverage
(Lithium batteries)**

| | |
|------------------------------|----------|
| 1 (summary / event) per day | 189 Days |
| 1 (summary / event) per hour | 70 Days |

MOUNTING OPTIONS

- Screw mount
- Magnet feet (optional)
- Adhesive Pads (optional)

PROCESSOR

- ARM Cortex-M4F processor core
- 1024 KB Flash memory
- 256 KB single-cycle System SRAM

SENSOR

- 3-Axis, 3200 g Digital MEMS Accelerometer
- Shock event detection and Activity/inactivity monitoring
- Wide temperature range: -40°C to +85°C
- Pb free/RoHS compliant

ACCURACY

Accurate up to 65 g-force with +/- 10 g-force variance

| G Force Impact | Full Range Accuracy | SpotBot Alarm Setting |
|----------------|---------------------|-----------------------|
| 65G to 30G | 3% | 30G |
| 30G to 10G | 7% | 10G |
| 10G to 4G | 9% | 4G |

Duration of Impact: 10 to 18ms

Frequency: 100Hz

GLOBAL CELLULAR RADIO

Global cellular 3G connectivity (internal SIM)

| | |
|--------------|--|
| Bands | UMTS 800/850/900/ |
| | AWS/1900/2100 |
| | GSM 850/900/1800/1900 |
| Certs | CE, GCF, FCC, PTCRB, IC approved |
| | US, EU, Canada |
| | Pending Japan, China, India, Brazil, Australia, Hong Kong, South Korea, Mexico |
| | Pending IP67 |