

g-View Impact Recorder



ShockWatch® g-View offers a simple impact recorder solution to monitor where assets have been mishandled in transport or storage.

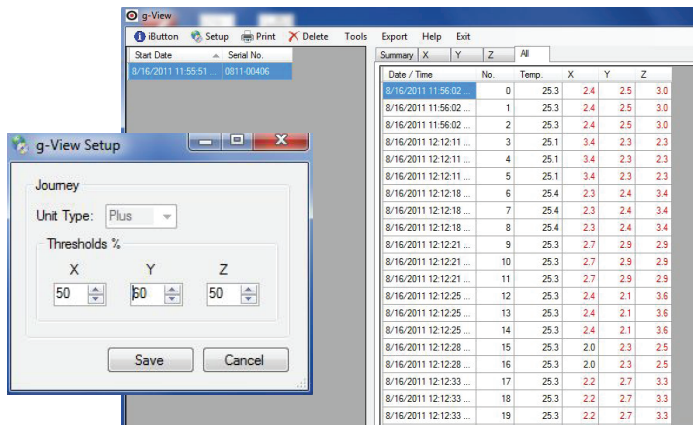
ShockWatch g-View is a simple solution for monitoring and recording impacts during transportation and storage. The device provides an accurate record of the dates and times at which the user-defined impact limit is exceeded on the X, Y, and Z axes. With the capacity to record data for 100 over-threshold events per axis, the g-View alerts you if a potentially damaging impact has occurred so you can respond promptly.

Features

- X, Y and Z impact thresholds that can be independently programmed for precise monitoring
- Sensors to record date, time, internal temperature, axis exceeded, and impact amplitude
- iButton® for setup, resetting, and data transfer
- Self-contained unit design, free of cables and wires
- LED lights for visual notification of threshold breaches
- Simple programming interface

Software

Control your g-View device through a simple Windows®-based software program. Clear instructions allow users to create journey setup files, program iButtons, and view recorded data in a tabulated format.



Ideal applications

- Medical equipment
- Communications equipment
- Electronics manufacturing equipment
- Aircraft parts
- Alternative energy subassemblies
- Cargo containers
- Crates

Key Specifications

Operating Temperature Range:	14°F to 122°F -10°C to 50°C
Size:	2.8in x 2in x 1.2in 70mm x 50mm x 30mm
Weight:	2.56oz / 81g
Battery:	1 x AA alkaline (replaceable)
Battery Life:	Up to 6 months
Case Material:	PC/ABS
Sealing	IP65
Shock Range/Cut off Frequency: (Factory Set)	10g / 25Hz 25g / 40Hz
Alarm Threshold:	20-90% per axis
Shock Accuracy:	± 6% of full scale
Resolution:	0.1g
Memory:	100 events per axis
Communications:	iButton®