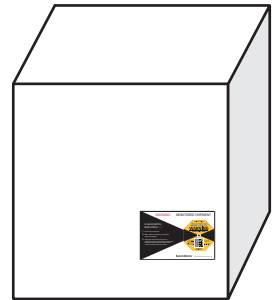


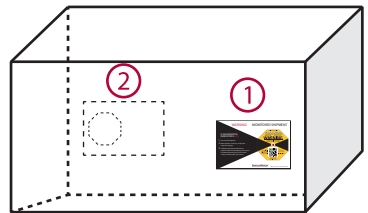
RULES OF THUMB

1. Place labels on the right edge of the shipment.
2. Avoid the center of the package because the mounting location should be structurally sound.
3. Place labels on the longest side of the package
4. The heavier the shipment, the lower you should mount the label.
5. Place the Alert Sticker on the bill of lading as a reminder for receivers to check the indicator immediately upon arrival.

1. Mount the ShockDot Impact Indicator in the lower third of the package/pallet as close to the edge as possible.



2. If the package is twice as long as it is wide, use two ShockDot impact indicators. Place a second indicator in the same position on the opposite side of the package.



3. While these instructions are considered best practices, each situation may be different. If you have any questions please call Shockwatch on (02) 9586 1933 or email: solutions@shockwatch.com.au