



# LOG•IC

## quick start guide

### Programming the LOG•IC Datalogger

1. Request LOG•IC software at:  
<http://info.shockwatch.com/logic-sw>
2. Plug the recorder into the USB port on your computer.
3. Verify that the recorder is OFF. The recorder status is displayed when you plug the LOG•IC into the computer (Figure 1). If the recorder is not OFF, click the “Select Tag Mode” icon (Action Icon 1) and click the STOP button (Figure 5).
4. Click on the “Configure Tag” icon (Action Icon 2), select a default or custom temperature profile configuration and press “Configure” (Figure 2). A green box on the left will display PASSED.

To create a custom profile, click “Add” and enter the custom profile parameters (Figure 3). Once finished, click “OK” and this profile will always be available in the custom profile section. Name the custom profile something meaningful to you for easy identification.

5. Two data fields are available to help identify specifics of the LOG•IC record: route, carrier information, payload description, etc. To edit these fields, click on “Manage Tag User Data” (Action Icon 3) and enter label and data information for the two lines. These fields will be displayed in the overview screen when the LOG•IC is downloaded (Figure 1).

Click “Set Label” and “Set Data” to confirm that this information is added to the tag. PASSED will be displayed confirming that the information has been accepted (Figure 4).

6. Return to the “Select Tag Mode” icon and set start and stop tag preferences (Figure 5).

Options for starting the tag are Immediately, with Tag Button Press, and at Auto Awake Time.

Options for stopping the tag are Manually, at Auto Sleep Time, and After Auto Record Time.

Once you have made your selections, click on the start button and PASSED will be displayed.

#### Action Icons



#1 - Select Tag Mode



#2 - Configure Tag



#3 - Manage Tag User Data



#4 - PDF Report

Figure 1

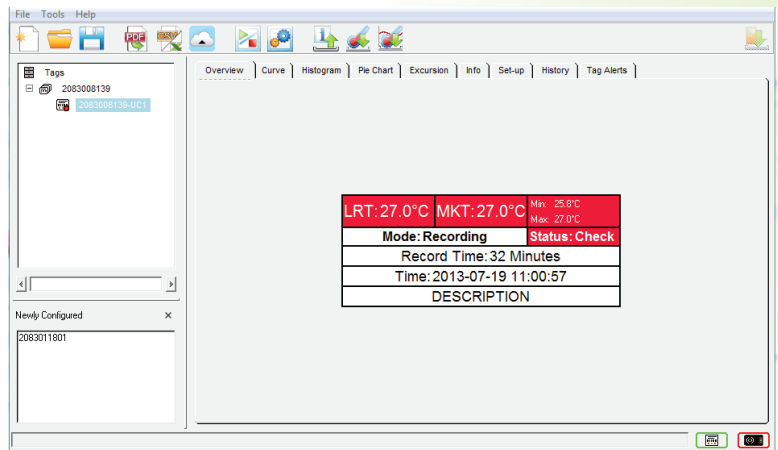
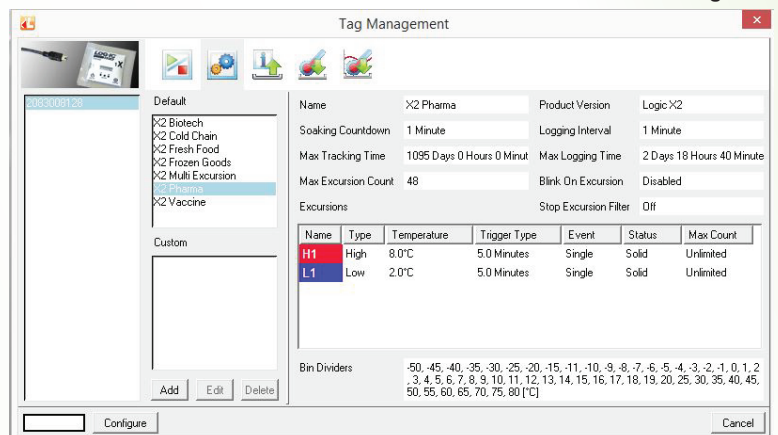


Figure 2





# LOG•IC

## quick start guide

### Programming the LOG•IC Datalogger (cont.)

7. If you elected to start the LOG•IC “With Tag Button Press”, the tag mode should read “STANDBY” until the ON/OFF button on the TrekView unit is pressed.
8. Unplug the LOG•IC from the computer. Hold the ON/OFF button until the ACTIVE light is a solid green. The tag will start recording once it has gone through the soaking countdown that was set during the configuration process (Figure 3). If you press the ON/OFF button more than once during the soaking countdown, the soaking time restarts.
9. To download the data, plug the LOG•IC into the USB port on your computer and make sure the recorder is turned off (Refer to Step 2). Click “File”, “Save As”, name the file and select the folder to be used for storing the file data.
10. To print the PDF report, click on the PDF icon (Action Icon 4), highlight the tag ID (See Figure 1), click “Save” and the report will appear.
11. Follow this same process when reusing a tag. Note: When you send a new configuration to the recorder, you will have erased any previous data from the tag.

#### Action Icons



#1 - Select Tag Mode



#2 - Configure Tag



#3 - Manage Tag User Data



#4 - PDF Report

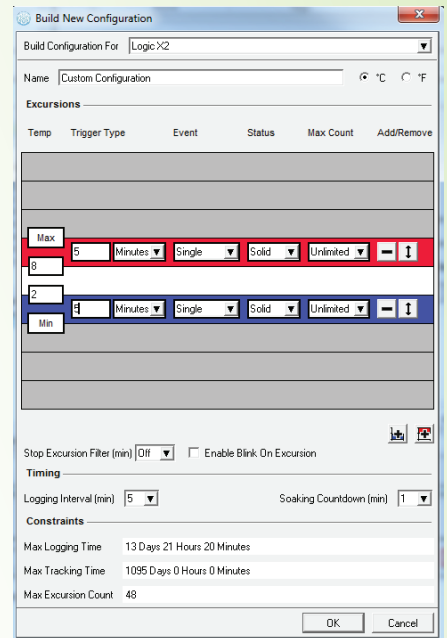


Figure 3

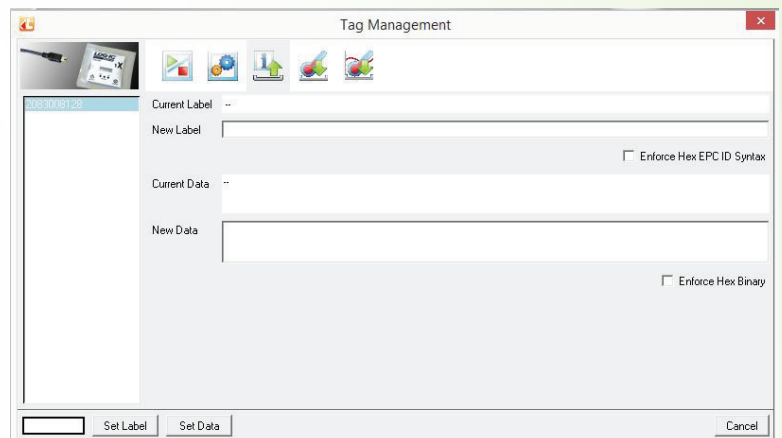


Figure 4

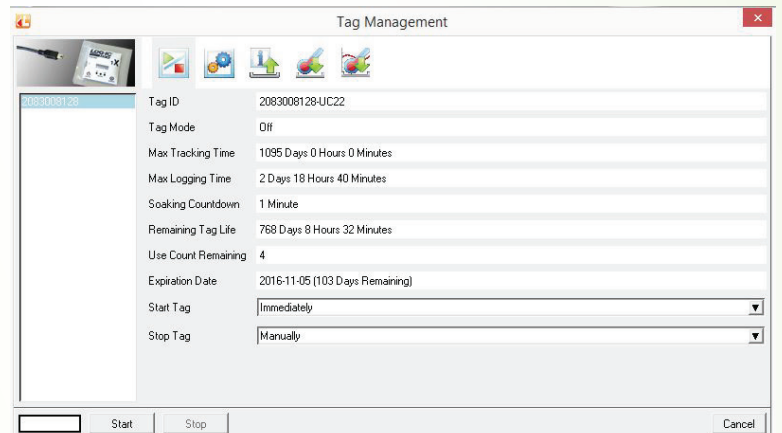


Figure 5