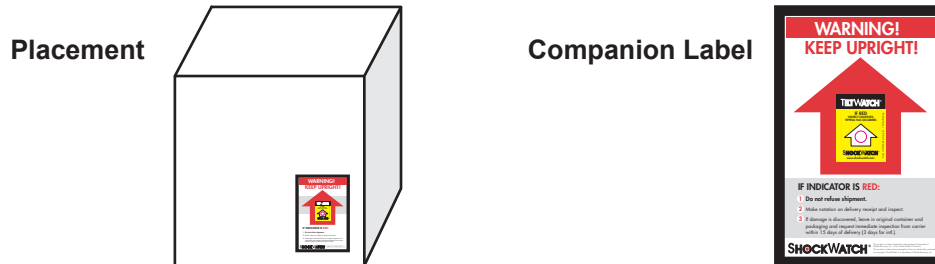


TiltWatch® XTR Mounting Instructions

TiltWatch XTR is a tilt indicator designed to detect unacceptable tilting of goods that must remain upright.

1. Peel the adhesive liner from the back of the TiltWatch XTR while holding it in an upright position. Once the adhesive liner is removed, the TiltWatch XTR is armed. Apply the TiltWatch XTR to an oil-free surface in an environment above 10°C / 50°F for best results.
2. Place the TiltWatch XTR in an upright position near the lower corner of the shipping container. Mounting as low as possible provides the best response.



3. Press the TiltWatch XTR firmly in the center and around the edges to ensure strong adhesion to the container to which it is being applied.

When using a companion label:

Remove the TiltWatch XTR companion label from its adhesive liner and carefully place it over the TiltWatch XTR so that it protrudes through the opening.

TIP:

Rough wood and heavily waxed wood containers may require special attention. If the wood is extremely rough, ShockWatch recommends the use of a spray adhesive to increase bonding strength.

ALERT STICKERS:

Every carton of 100 TiltWatch XTR indicators also contains 100 alert stickers. Place the alert sticker on the packing slip as a reminder to customers to check the TiltWatch XTR immediately upon arrival.



SHOCKWATCH®
SMART SOLUTIONS FOR SAFE TRANSIT

For more information, visit www.shockwatch.com or call toll-free 800.527.9497.