

PRO-TECT 2000 SAFETY CUTTER

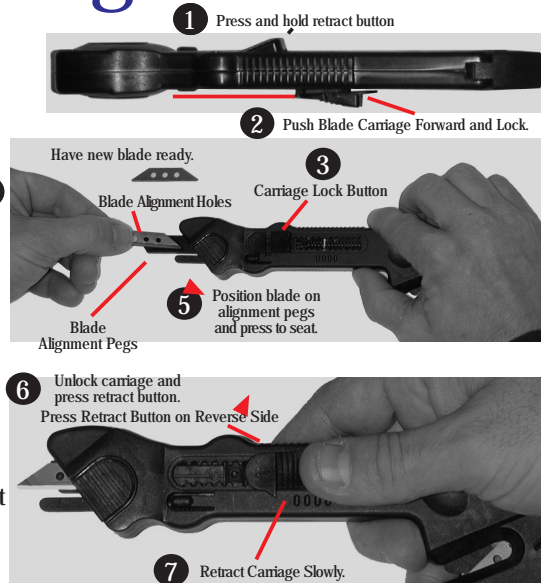
OPERATING INSTRUCTIONS



Blade Loading

Loading Blade #1

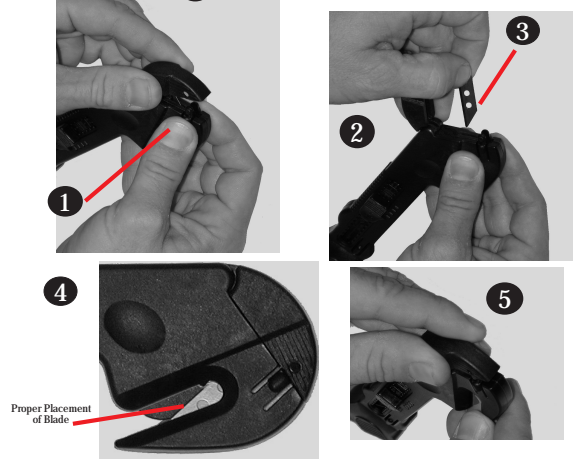
- 1 Press and hold blade retract button.
- 2 Push blade carriage all the way forward and lock.
- 3 Before changing blade make sure carriage is locked.
- 4 Remove old blade and dispose of properly.
- 5 Position new blade over alignment pegs and press to seat.
- 6 Put thumb behind carriage button and unlock.
- 7 Keep thumb behind carriage button while pressing the retract button and allow carriage to retract slowly.



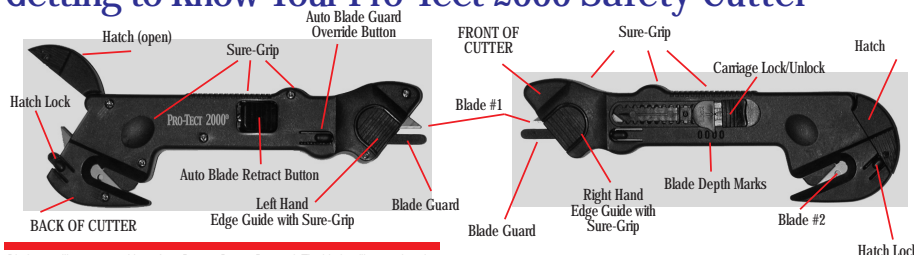
Loading Blade #2

CAUTION: Retract blade #1 before replacing blade #2.

- 1 Grip release buttons and open hatch.
- 2 Place blade between thumb and forefinger, remove and dispose of blade properly.
- 3 Place new blade between thumb and forefinger and insert blade into channel.
- 4 To ensure proper placement, visibly inspect blade. Make sure two holes are visible, (see illustration to right).
- 5 Close hatch and snap shut to lock.



Getting to Know Your Pro-Tect 2000 Safety Cutter



Blade #1 will not move without Auto Retract Button Pressed. The blade will retract into the cutter by simply pressing the Auto Retract Button.



CARRIAGE ADJUSTMENT
In order to push blade out you need to press the Auto Retract Button at the same time you are pushing the unlocked Blade Carriage Button Forward.



Pro-Tect 2000 Cuts

Strap Cut



Film Cut



Tray Cut



Top Cut



Tape Cut



Pro-Tect 2000 Accessories

