

Easy Cut™

Safe Cutting Quick Tips and Procedures

KNOW YOUR CUTTERS FUNCTIONS

SETTING THE BLADE DEPTH (1): Push down and rotate blade depth dial to desired position (1). You should feel the dial click into place. 95% of all box cuts need the depth setting to be placed in position (1).



SETTING THE BLADE DEPTH (2): Push down and rotate blade depth dial to desired position. You should feel the dial click into place. The (2) position is for double wall corrugated boxes.



SETTING THE BLADE DEPTH (3): Push down and rotate blade depth dial to desired position. You should feel the dial click into place. Position (3) is used for extra thick boxes.



LOCKING THE BLADE (L): Push down and rotate blade depth dial to locked position. You should feel the dial click into place. This locks the blade inside the cutter.



BLADE STORAGE: IMPORTANT! Place only two blades in the rear storage area. TWO BLADES ONLY! - ANY MORE WILL CAUSE A MALFUNCTION.



BLADE STORAGE/STORAGE LID: Make sure blades are flush with carriage as shown below. Close lid, blades must not interfere with lid closing.



CHANGING BLADE: Open cover, remove used blade. With new blade in hand, place blade tip in carriage and rest back of blade on bridge (as shown below). Release blade. Blade should slide into place.



CHANGING BLADE/CLOSING CARRIAGE COVER: Make sure blade is flush with carriage as shown below. Close cover, blade must not interfere with cover closing. If cover does not close easily repeat above procedure.



AUTO EDGE GUIDE DEPLOYMENT: Turning the switch on the holster to the "ON" setting will cause your edge guide to automatically deploy. You can set either side to deploy. When off, you must deploy edge guides with your thumb.



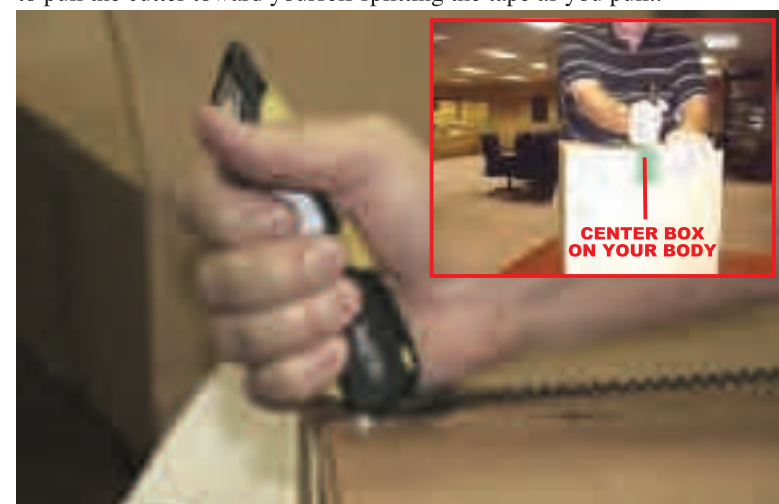
HOLSTER CAN BE SET FOR BOTH RIGHT OR LEFT HANDED USERS. BELT CLIP REMOVAL: Place the cutter in the holster. To remove belt clip, push down as holster rests on a table or box as shown in picture below.



DISCONNECTING HOLSTER FROM CUTTER: Press release lever and unlatch from eyelet as shown below.



MAKING A TAPE CUT: Position yourself centered to the box, begin to split the tape approximately 1/2 from the far side. Apply pressure and begin to pull the cutter toward yourself splitting the tape as you pull.



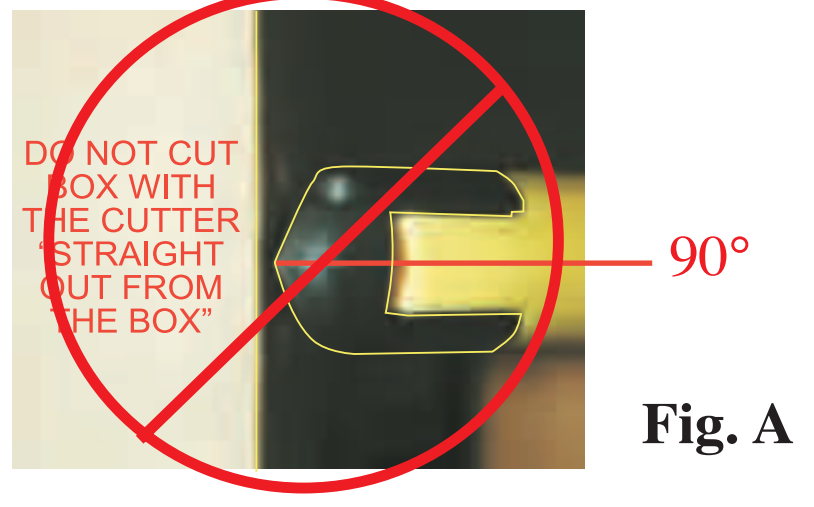
CUTTER POSTURE: IMPORTANT! Shown below is the correct way to hold the cutter when cutting. Squeeze the trigger to engage blade. Once blade is engaged into box, relax your grip on the trigger.



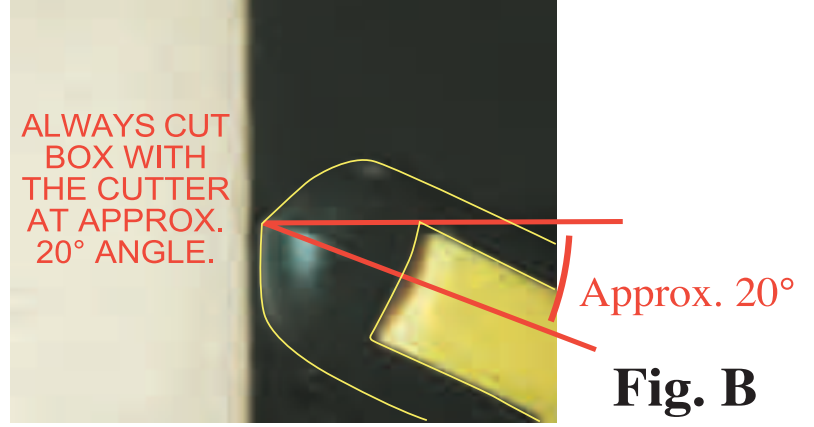
CUTTER POSTURE: When using the edge guide, place your thumb on the top of the edge guide. Squeeze the trigger to engage blade. This is the correct way to hold the cutter for making top cuts.



INCORRECT ANGLE



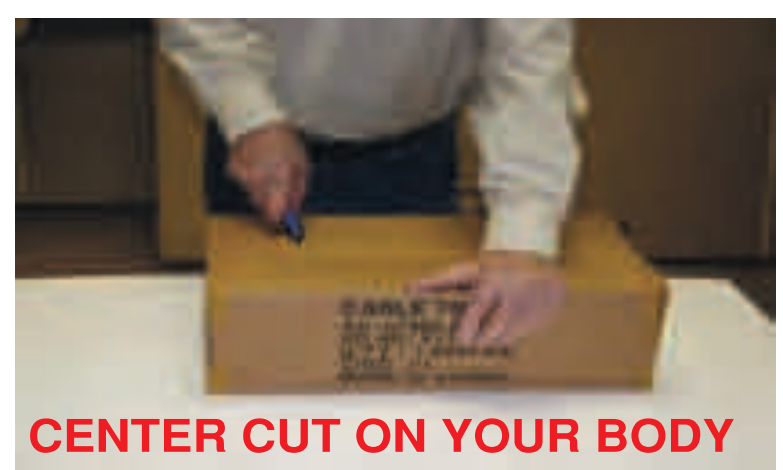
CORRECT ANGLE



IMPORTANT

If you follow the instructions below, and do each one singularly, you will make a safe cut. Regardless of what type of cut you are doing, center the cutting edge of the box to your body. For safety, place your hand on the opposite side of the box. Position the angle of the box so it is comfortable for you to make the cut. Squeeze the trigger, place the front of the cutter against the box, then using the proper angle (approximately 20°) make the cut. Pull the cutter, using your body as the center point for direction on all cuts.

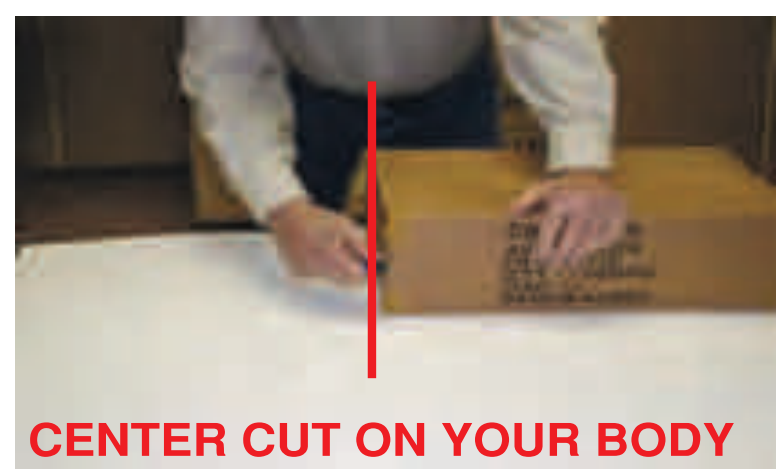
ALWAYS HOLD BOX ON FAR SIDE AWAY FROM CUT DIRECTION



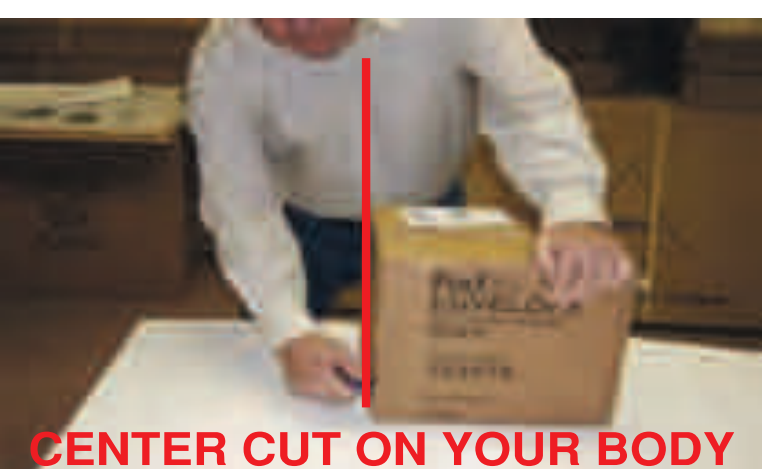
CENTER CUT ON YOUR BODY



CENTER CUT ON YOUR BODY

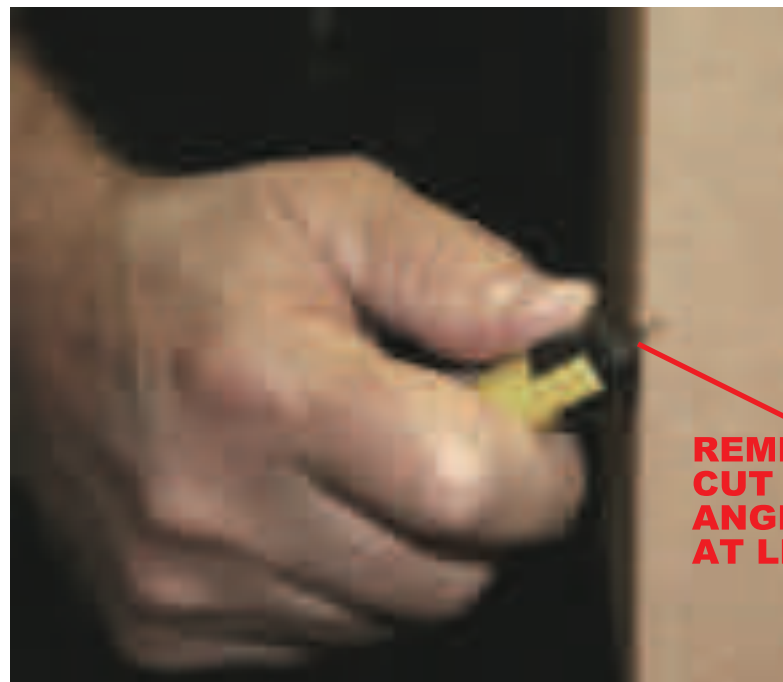


CENTER CUT ON YOUR BODY



CENTER CUT ON YOUR BODY

CENTER CUT: Center box in front of you as shown in inset picture. Use the flat part of the cutter to establish the proper cutting angle. Never cut at 90° as shown on previous page. Engage blade and make cut. Relax your grip on the trigger once blade is engaged in the box.



REMEMBER TO CUT USING ANGLE SHOWN AT LEFT

CENTER CUT ON YOUR BODY



CENTER CUT ON YOUR BODY

TOP CUT: Extend the edge guide. Using the proper cutting angle. Center box in front of you as shown in the inset picture. Engage blade and make cut. Relax your grip on the trigger once blade is engaged in the box.



REMEMBER TO CUT USING ANGLE SHOWN AT LEFT

SUGGESTED HOLSTER USAGE

BELT/POCKET CLIP: The belt clip can be placed inside your pocket, with the clip out as shown below. Squeeze clip and place holster inside your pocket. Releasing pressure on the clip secures holster to your pants.



SQUEEZE CLIP AND ATTACH TO POCKET

REMOVING CUTTER FROM HOLSTER: Squeeze trigger on the cutter when removing cutter from holster as shown below. This makes it easier to remove cutter without pulling holster out of position.



SQUEEZING TRIGGER HELPS WHEN REMOVING CUTTER FOR USE

BELT CLIP SETTING: The belt clips will allow a full 360° of revolution. This allows you to wear the cutter upright or at any other position that makes you comfortable.

