

# EQUIPCOMMAND™ SOFTWARE



ShockWatch® EquipCommand™ software interfaces with onboard ShockWatch Equipment Monitor products, allowing managers to monitor fleet performance from their workstations.

A comprehensive dashboard displays fleet information collected from configurable event parameters and data inputs. This dashboard helps managers monitor daily activities and manage long-term objectives for all equipment and operators across multiple facilities. Businesses can use this comprehensive software program to monitor equipment access, utilization, safety, and maintenance for optimal fleet performance.



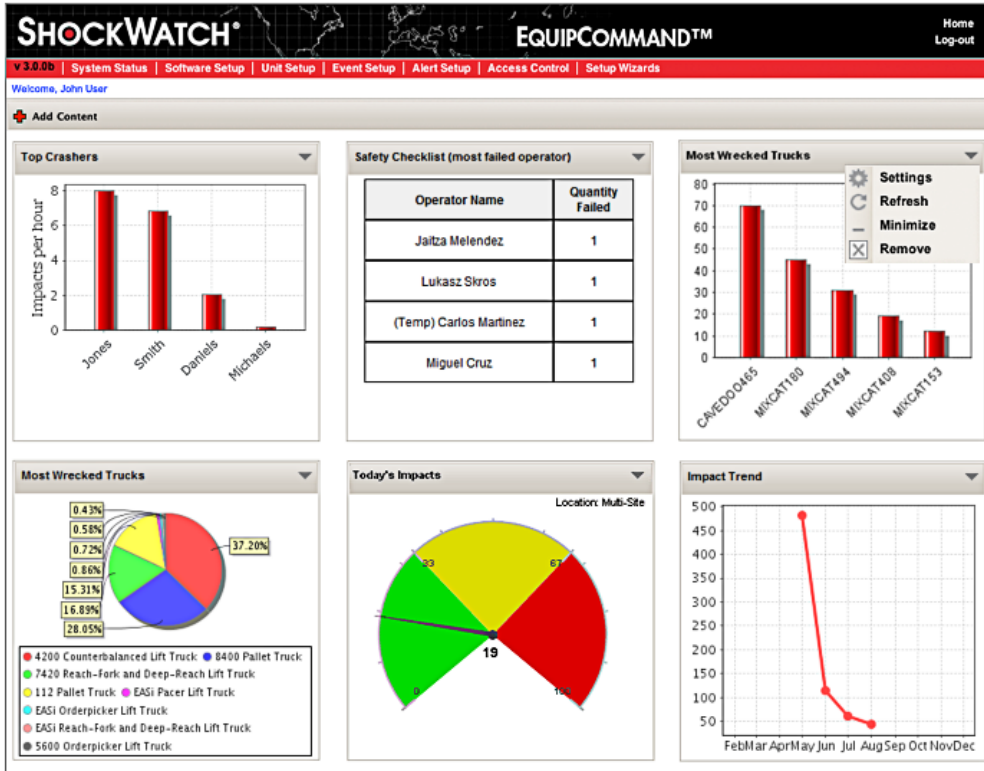
Use EquipCommand software with:

EquipManager®  
ImpactManager® RF  
ImpactManager® ID  
UsageManager®  
FleetControl™ Manager

## ■ Benefits

- Helps reduce injuries, equipment damage, and related costs
- Enables managers to view, manage, and analyze fleet information across all facilities
- Allows for customization of the dashboard and display settings
- Refreshes automatically to show the most current information
- Helps managers identify challenges and recognize good performance
- Alerts managers when maintenance and operator refresher training are needed for OSHA compliance
- Locates equipment to allow for timely repairs when needed
- Allows managers to coordinate work schedules and assignments
- Helps managers improve equipment utilization and fleet rotation for optimal productivity
- Maximizes the ROI for ShockWatch Equipment Monitors

# EQUIPCOMMAND™ SOFTWARE



## Specifications

- Runs on Windows® NT, 2000, 2003, XP, Vista, and 7 operating systems
- Runs on Microsoft® Internet Explorer™ or any Gecko-based browser

## Sample of Available Widgets

- **Impact** — Top Crashers, Best Drivers, Impact Trend, Most Wrecked Trucks, Today's Impacts
- **Safety Checklist** — Safety Checklist Fail, Safety Checklist (Most Failed Operator), Safety Checklist (Most Failed Truck), Safety Checklist (Most Failed Question)
- **Usage** — Operator Utilization, Usage Score Card, Simultaneous Utilization
- **Certification** — Operator Certification
- **Maintenance** — Overdue Maintenance

## Features

- Intuitive user interface for easy navigation
- Drag-and-drop widgets for easy personalization of the dashboard
- Customizable widgets and display settings
- Graphs and charts that clearly represent fleet information
- Ability to view fleet information for multiple facilities at the same time
- Dashboard view of all monitoring units, maintenance schedules, and event history
- Reporting widget with multiple dropdown filter options for fast report generation
- Allows for automated report scheduling and distribution
- Setup wizards for fast and easy unit configuration, access assignments, and definition of events/alerts
- Standard reports screen with multiple dropdown filter options for fast report generation
- Unit setup menu for managing worksite locations, equipment types and owners, safety checklist prompts, and safety messagesScreens for configuring input ports for each ShockWatch Equipment Monitor
- Event setup menu for defining and configuring events and the required action for each
- Alert setup menu for managing alerts, warning thresholds, and alert targets
- Access control menu for managing lists of supervisors, personnel, iButtons, and work shifts or assignments

This document contains trademarks and registered trademarks of ShockWatch, Inc., in the United States of America. This document contains text and graphics that are individually protected by copyright.

**SHOCKWATCH®**  
DAMAGE PREVENTION. WE'RE ON IT.

1111 W. Mockingbird Lane, Suite 1050 | Dallas, Texas 75247  
800.527.9497 | Fax 214.638.4512 | info@shockwatch.com  
www.shockwatch.com

Your Authorized Representative